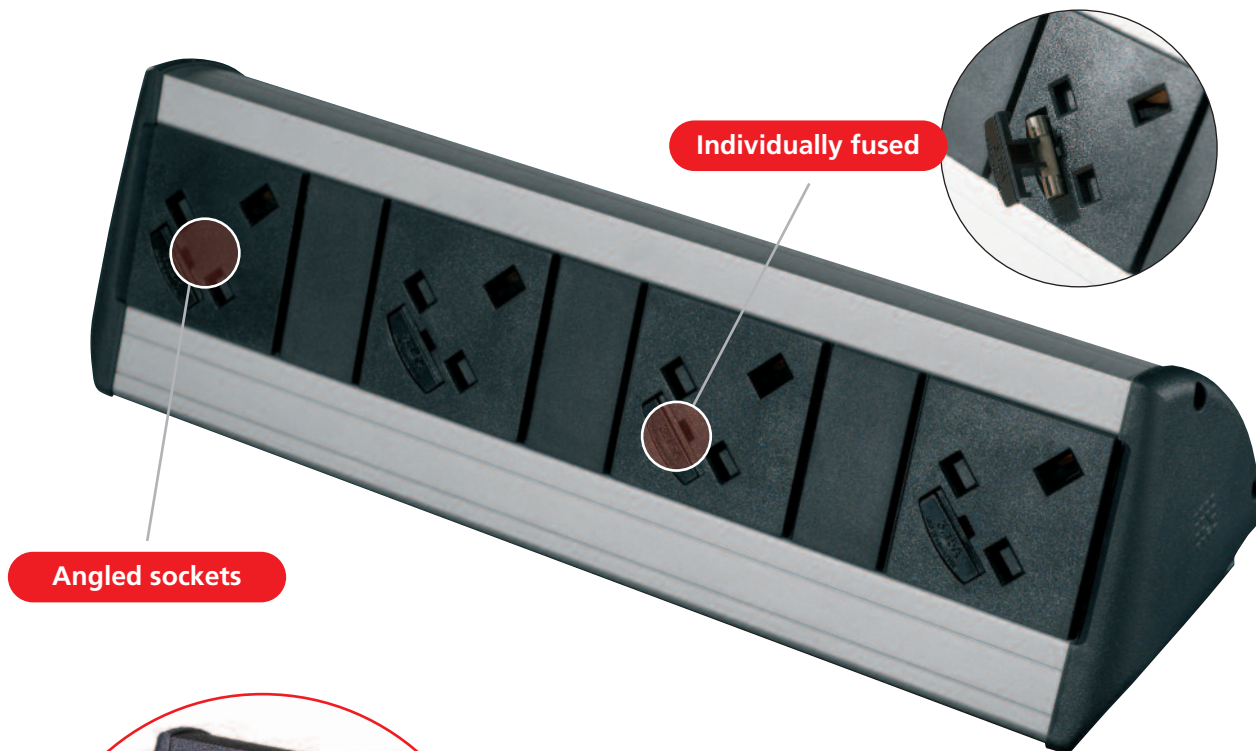


harmony power module

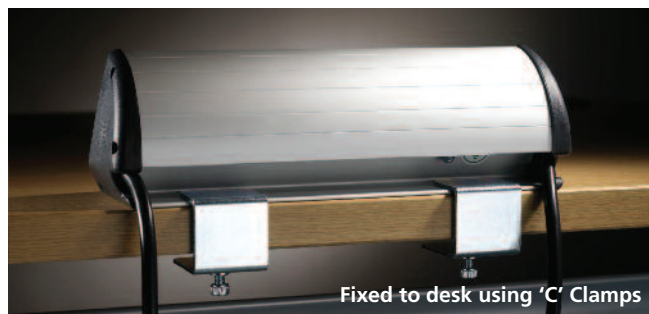
Harmony is a versatile desk power solution, specifically designed to meet the increasing power and everyday communication needs of a working office. The harmony features integral fuses which are fully compliant to current safety regulations and is configured with segregated power & data choices to suit different workstation requirements. Harmony can be used in conjunction with our under desk modules to provide greater power solutions and is fitted to the edge of desk with 2 'C' clamps making it functional yet non-intrusive to the working desk.



Angled sockets



NOW AVAILABLE IN ALL BLACK



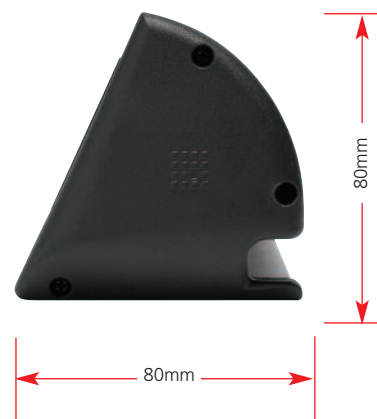
Fixed to desk using 'C' Clamps

harmony power module

Please note: Fuses only accessible after removal of equipment plug.
Lead lengths shown will be the conductor length and not the distance from the end of the module to the plug. For example a 3m pre-wired power lead will be approximately 2.875m as 125mm will be internal for the termination, this is also applicable for data leads.

key features

- Anodised aluminium extruded body, also available in black
- Standard finish in silver with black, grey or white fascias/end caps
- Fully segregated power and data
- All UK sockets feature integral fuses. Choice of 3.15A or 5A fuses are available to comply with BS 6396:2008
- All standard options are supplied with a 1 metre 3 pole connector. Requires a separate mains lead if passing from a 13A socket
- Data leads are supplied at a standard length of 3 metres
- Complies with BS 5733
- Fuses only accessible after removal of equipment plug
- Choice of power and data connectors to most specifications
- Will accept Category 6 data sockets if specified
- Fixing via standard 'C' clamps or adhesive fixing kit



PLEASE NOTE: Fuses only accessible after removal of equipment plug.



2 x Power Sockets

2 x power sockets, 3.15 Amps individually fused
(supplied with 1m mains lead to male 3 pole connector plug)
Product weight: 0.5kg

code	colour	code	colour
84PS02	all black	84P656	grey
84PS01	black	84P642	white



3 x Power Sockets

3 x power sockets, 3.15 Amps individually fused
(supplied with 1m mains lead to male 3 pole connector plug)
Product weight: 0.9kg

code	colour	code	colour
84PS04	all black	84P744	grey
84PS03	black	84P782	white



4 x Power Sockets

4 x power sockets, 3.15 Amps individually fused
(supplied with 1m mains lead to male 3 pole connector plug)
Product weight: 0.9kg

code	colour	code	colour
84PS06	all black	84P670	grey
84PS05	black	84P671	white



2 x Power Sockets 2 x RJ45 Cat5e Data Sockets

2 x power sockets, 3.15 Amps individually fused
(supplied with 1m mains lead to male 3 pole connector plug)
2 x RJ45 Cat5e data sockets (supplied with 3m data leads)
Product weight: 0.9kg

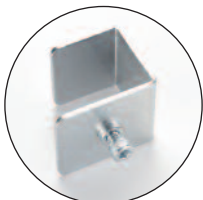
code	colour	code	colour
84US02	all black	84U1312	grey
84US01	black	84U1441	white



4 x Power Sockets 2 x RJ45 Cat5e Data Sockets

4 x power sockets, 3.15 Amps individually fused
(supplied with 1m mains lead to male 3 pole connector plug)
2 x RJ45 Cat5e data sockets (supplied with 3m data leads)
Product weight: 1.3kg

code	colour
84US04	all black
84US03	black



'C' Clamp

The 'C' clamp accommodates a desk top thickness of between 20mm to 32mm. To tighten the clamp use a 5mm allen key (not supplied). 2 x 'C' clamps are recommended for any modules with more than 2 sockets.

code 440005



Adhesive Kit

The adhesive strips have been rigorously tested to ensure that they work on a variety of surfaces. Please check with the furniture provider as to the suitability of the surface finish. 1 kit is required per module. CMD will not be held liable for any damage resulting from the normal use of this product.

code 440006

If you require any other configuration of power and data please contact our Sales Team.

NB CMD cannot accept any responsibility or liability for providing category 5e performance in products supplied. We will however fit category 5e specification components where specified. PLEASE NOTE: Fuses only accessible after removal of equipment plug.

Please note: Fuses only accessible after removal of equipment plug.

Lead lengths shown will be the conductor length and not the distance from the end of the module to the plug. For example a 3m prewired power lead will be approximately 2.875m as 125mm will be internal for the termination, this is also applicable for data leads.

harmony power module