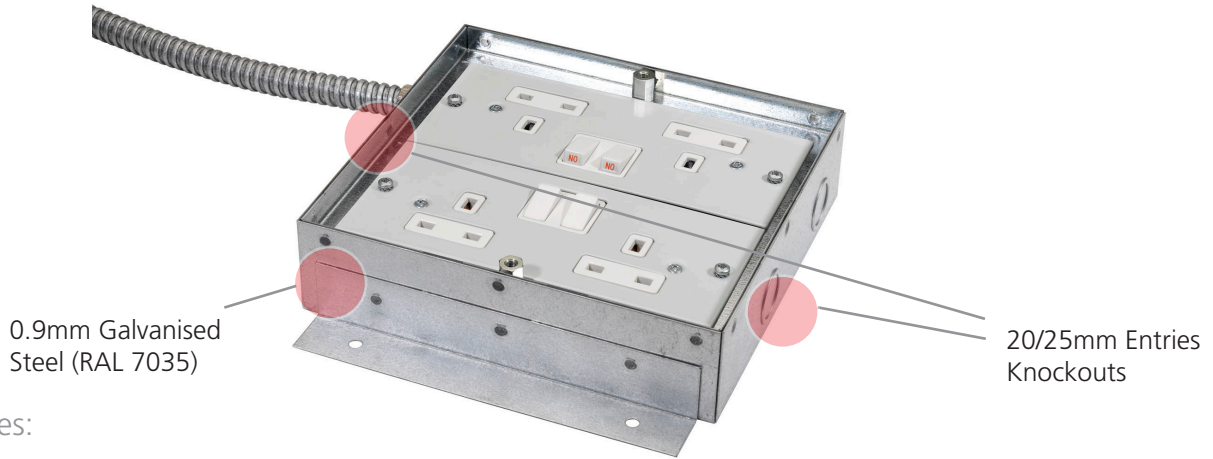


The slab floor box provides the same power and data services as our 'Fast Fit' floor box but are a more affordable choice when budget control is a top priority. They can also be used in conjunction with our 'Fast Fit' floor grommets and hives. Our slab boxes are ordered as a single assembly - select from our wide range of serviced power and unserviced data options.

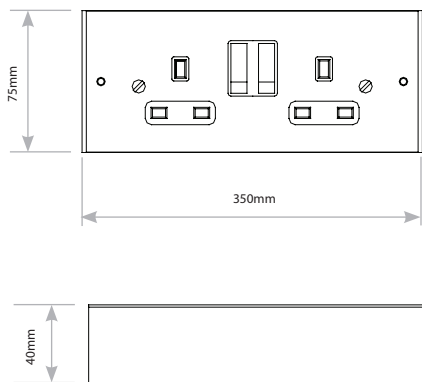


## Features:

- \* Affordable underfloor power solution
  - \* Fast and efficient installation with intergrated fixing plates
  - \* Use in conjunction with a fast fit floor grommet/hive for a space saving alternative to floor boxes
  - \* Wide range of power and data accessories available to meet all requirements to suit a variety of requirements see Accessory Plates page for details\*
  - \* Manufactured from galvanised steel
  - \* Each compartment has 2 entries for 20mm & 2 entries for 25mm flexible conduits
- \*Please note 1, 2 and 4 compartment slab boxes - select from 4 compartment Accessory Plates. 3 and 4 compartment Accessory Plates cannot be mixed.

## 1 compartment

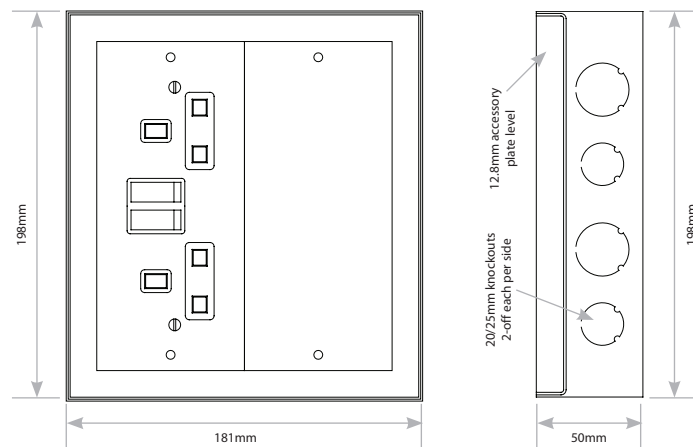
1 compartment slab box (optional fixing feet). The overall size of the unit is 175 x 75 x 40mm deep. The box base has a 20mm cut out to allow conduit access. The box is manufactured from galvanised steel finished in RAL 7035.



Code	Description
PPB4554	Loose Laid
PPB7096	Fixing Feet

## 2 compartment

2 compartment slab box base assembly (optional fixing feet). The overall size of the unit is 181 x 198 x 50mm deep. The box base has 20mm and 25mm conduit knockouts in each short side that can be grommeted to allow cable access. Dividing fillets are provided to separate services. The box base is manufactured from galvanised steel and comes complete with a grid to accept interchangeable accessories.



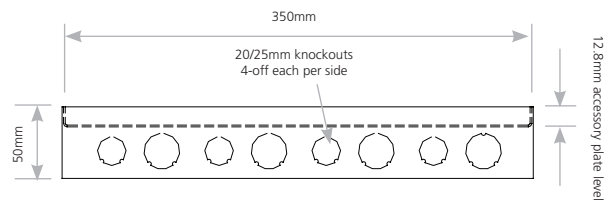
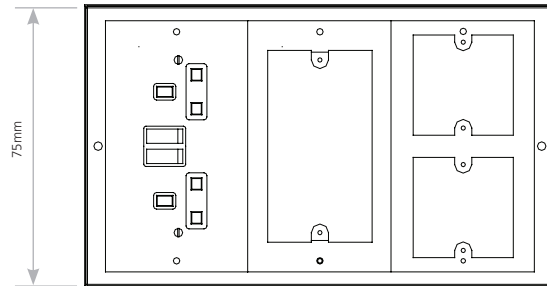
Code	Description
PPS9325	Loose Laid
PPS9325OS	Fixing Feet

# Slab floor boxes

## 3 or 4 compartment

3 or 4 compartment slab box base assembly (optional fixing feet). The overall size of the unit is 330 x 198 x 50mm deep.

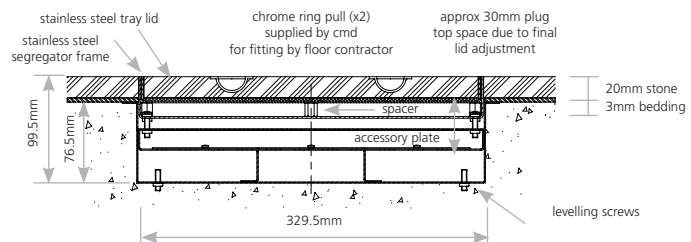
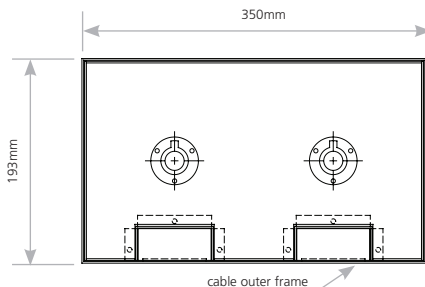
The box base has 20mm and 25mm conduit knockouts in each long side that can be grommeted to allow cable access. Dividing fillets are provided to separate services. The box base is manufactured from galvanised steel and comes complete with a grid to accept interchangeable accessories.



Code	Description
PPS9035	3 Compartment Loose Laid
PPS9035OS	3 Compartment Fixing Feet
PPS9045	4 Compartment Loose Laid
PPS9045OS	4 Compartment Fixing Feet

## Stainless Steel Screed Boxes - 3 or 4 compartment

3 or 4 compartment access floor box comprising three distinct assemblies, the box base, the mounting frame and purpose made stainless steel frame/lid assembly (Depth 75mm & 23mm upstand). The box base has 20mm and 25mm conduit knockouts in each long side that can be grommeted to allow cable access. Dividing fillets are provided to separate services. The box base is manufactured from galvanised steel and comes complete with a grid to accept interchangeable accessories. The mounting frame is manufactured from galvanised steel and is suitable for mounting into a 332mm x 200mm hole cut into any access floor panel and has two fixing holes in each long side. The frame/lid tray assembly is manufactured from brushed stainless steel with straight edges and cable outlet brackets in the same material. The recess in the tray lid is 23mm deep. The box is provided with jacking legs for levelling and adjustment – Screed option only.



Code	Description
PPS90375SS/23	3 Compartment
PPS90475SS/23	4 Compartment