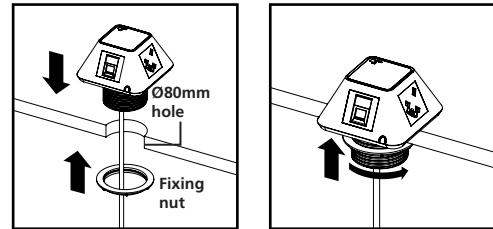


UK sockets with USB charging and data/AV shown for illustration purposes.

### Mounting to desk

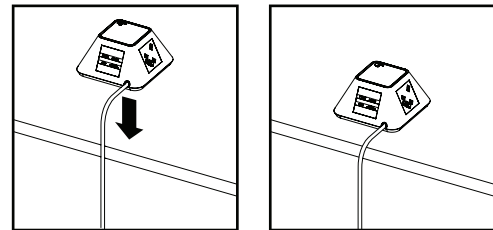
**In desk Inca - to suit 13-50mm desk thickness**



Lower the in desk Inca into a Ø80mm pre-cut hole. Ensure cable is fed through fixing nut.

Ensure sockets are in the desired orientation and secure in place by tightening fixing nut.

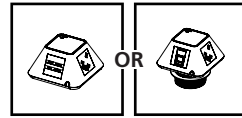
**On desk Inca**



For the on desk Inca option, simply place in a suitable location.

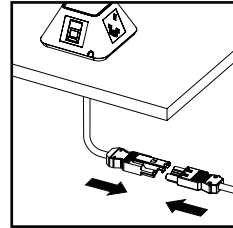
The Inca is mounted and ready to connect to a power source.

### Contents

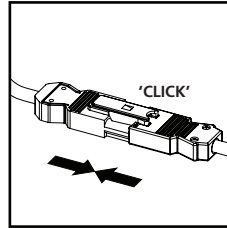


### Connecting to power

**Connecting standard 3-pole connector**

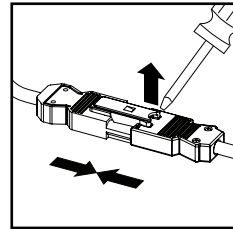


Plug the male 3-pole connector supplied as standard into a female powered connector.

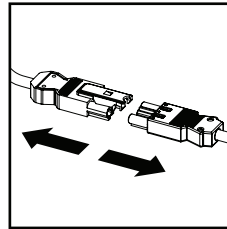


Ensure the attached locking mechanism clicks into place on both connectors.

**Disconnecting standard 3-pole connector**

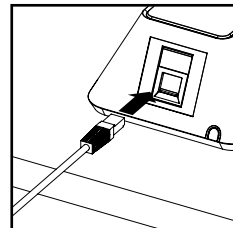


Use a suitable tool to release the locking mechanism.

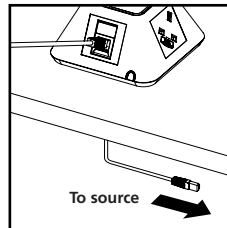


Separate the connectors.

### Connecting to data/AV (in desk)

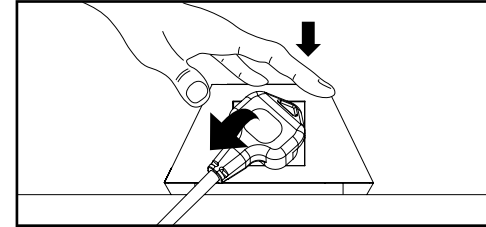


Insert the data/AV plug into the related port on the in desk Inca.



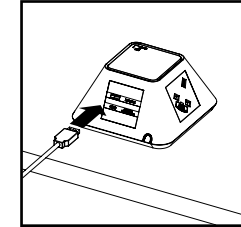
Connect cables from the Inca to the source. Use suitable cable management for safety.

### Inserting and removing plugs

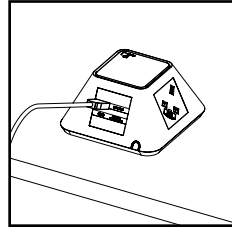


When inserting/removing plugs, please support the module with your free hand.

### USB charging (if applicable)



Insert the USB connector from your device into the relevant port on the Inca.



Ensure the cable is securely connected. Use suitable cable management for safety.

### Additional information

#### Safety

- Installation is to be carried out in accordance with relevant Health & Safety regulations and only to be carried out by a skilled or competent person.
- The product should be installed to comply with the relevant national standards and be inspected and tested prior to being put into service (in the UK BS 7671 Wiring Regulations or BS 6396 Office and Educational Systems Best Practice).
- Isolate the supply before installation or repositioning. Any locking mechanisms must be used and fully engaged.
- Incorrect use could lead to risk of electrocution.
- Connectors must not be engaged or disengaged when under load or live.
- Product to be used only for the intended purpose of distributing power and data in office and commercial environments.
- Do not misuse, dismantle or re-configure the product because doing so will invalidate the warranty.
- If a product incorporates RCD protection, the RCD should be regularly tested in-line with current standards.

#### Standards

- Refer to the Declaration of Conformity.

#### Further guidance

- Fuse replacement only to be carried out by a skilled or competent person.
- Should the supply cable need replacing, contact CMD.

#### Product care

- Clean using a dry cloth. No abrasives or solvents to be used on the product.
- Do not drop or expose to moisture.

