

Betatrak® underfloor busbar



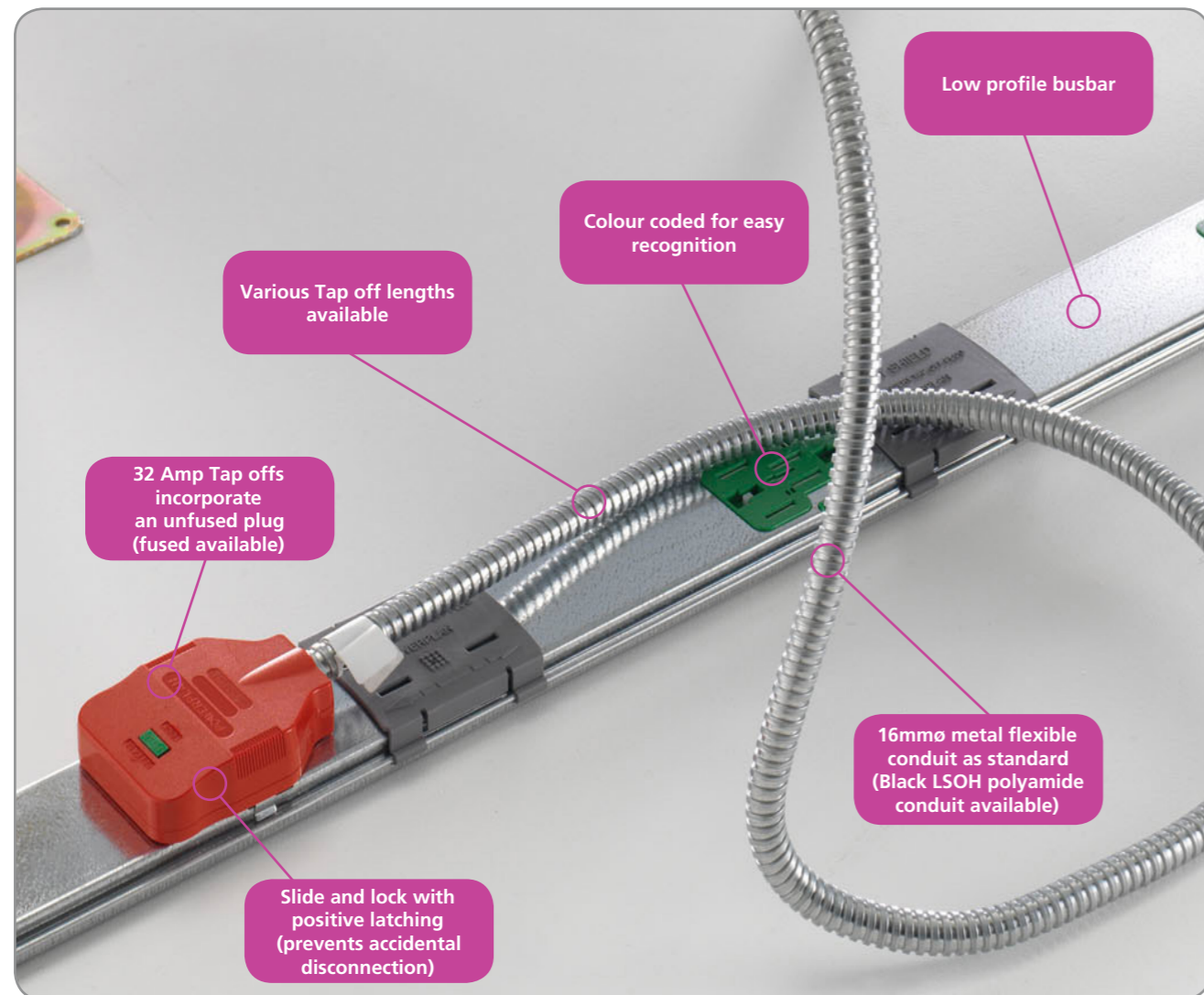
Busbars offer an efficient, flexible solution to underfloor power distribution as they use a click fit method for that fast and simple install. To reduce up front labour costs all busbars are tested at our manufacturing facilities meaning no onsite commissioning. Underfloor power solutions are also very low maintenance and exceptionally reliable making it the perfect solution in today's modern construction world.

The benefits of using an Underfloor Power Distribution System

- Choice: a comprehensive range of supply systems
- Flexibility: can be used in new or existing layouts
- Versatility: all kinds of configurations are possible including bends/corners
- Safety: colour coded tap offs for easy recognition. Sliding dust covers to protect outlets
- Height clearance: low profile busbar suitable for shallow floor voids
- Convenience: variety of Betatrak® lengths with different socket centres. 300mm standard (150mm and 600mm available on request)

The following versions are available for both Busbar and Tap Offs:

- Standard Earth
- Clean Earth (CE) Low Noise Earth
- Dual Circuit
- Auxiliary Earth
- Three Phase

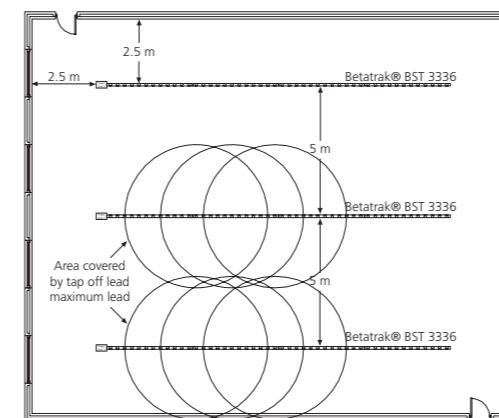


Betatrak® underfloor busbar

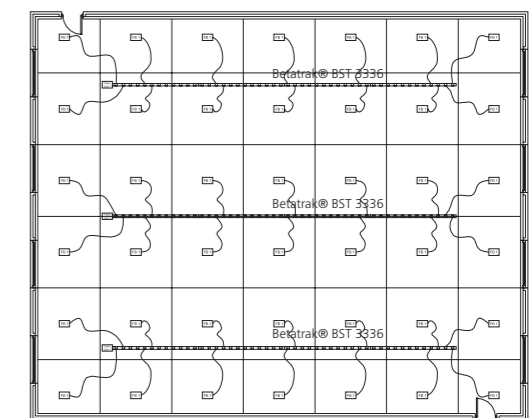


			Standard White 63 Amp	Clean Earth (CE) (Low Noise Earth) Red 63 Amp	Dual Circuit (Standard/Low Noise) Green 63 Amp	Auxiliary Black 63 Amp	3 Phase Blue 63 Amp
Length	No of Sockets	Centres (mm)					
3.6m	12	300	PBST3336	PBCT4336	PBDT6336	PBAT3336	PBTT5336
2.4m	8	300	PBST3324	PBCT4324	PBDT6324	PBAT3324	PBTT5324
1.8m	6	300	PBST3318	PBCT4318	PBDT6318	PBAT3318	PBTT5318
1.2m	4	300	PBST3312	PBCT4312	PBDT6312	PBAT3312	PBTT5312
Feed Unit			PBSF3010/S	PBCF4010/S	PBDF6010	PBAF3010/S	PBTF5010
Flexible Corner		1m	PBSB3031H/S	PBCB4031H/S	PBDB6031H	PBAB3031H/S	PBTB5031H
		2m	PBSB3032H/S	PBCB4032H/S	PBDB6032H	PBAB3032H/S	PBTB5032H
Flexible Corner Kit			PBSB3000/S	PBCB4000/S	PBDB6000	PBAB3000/S	PBTB5000

Typical Floor Layouts



Busbar
3m tap offs provide full coverage when busbar is laid out on 5m centres.



Floor Boxes
Typical layout: 1 floor box for every 10m²

Betatrak® underfloor busbar



The 63 Amp Betatrak® System caters for single phase standard, clean earth (CE) low noise, auxiliary, three phase or dual applications. Betatrak® comes in lengths of 1.2m, 1.8m, 2.4m or 3.6m with tap off positions provided at 300mm as standard (Note: 150mm & 600mm available on request). As a result, the system is extremely versatile and suitable for high to low density tap off requirements.

All integral connectors and tap off plug sockets are colour coded to avoid any possible errors during assembly. For maximum safety each operates a shutter on insertion to ensure no accidental contact can be made.

Installation

Betatrak® used within raised access floors is normally arranged in parallel runs with the feed units to the Betatrak® orientated towards the incoming supply. This offers an economic format inherent in long straight runs. Spacing should be a maximum of 5 metres between each length of track and 2.5 metres from the perimeter when using a standard 3 metre tap off to a floor box.

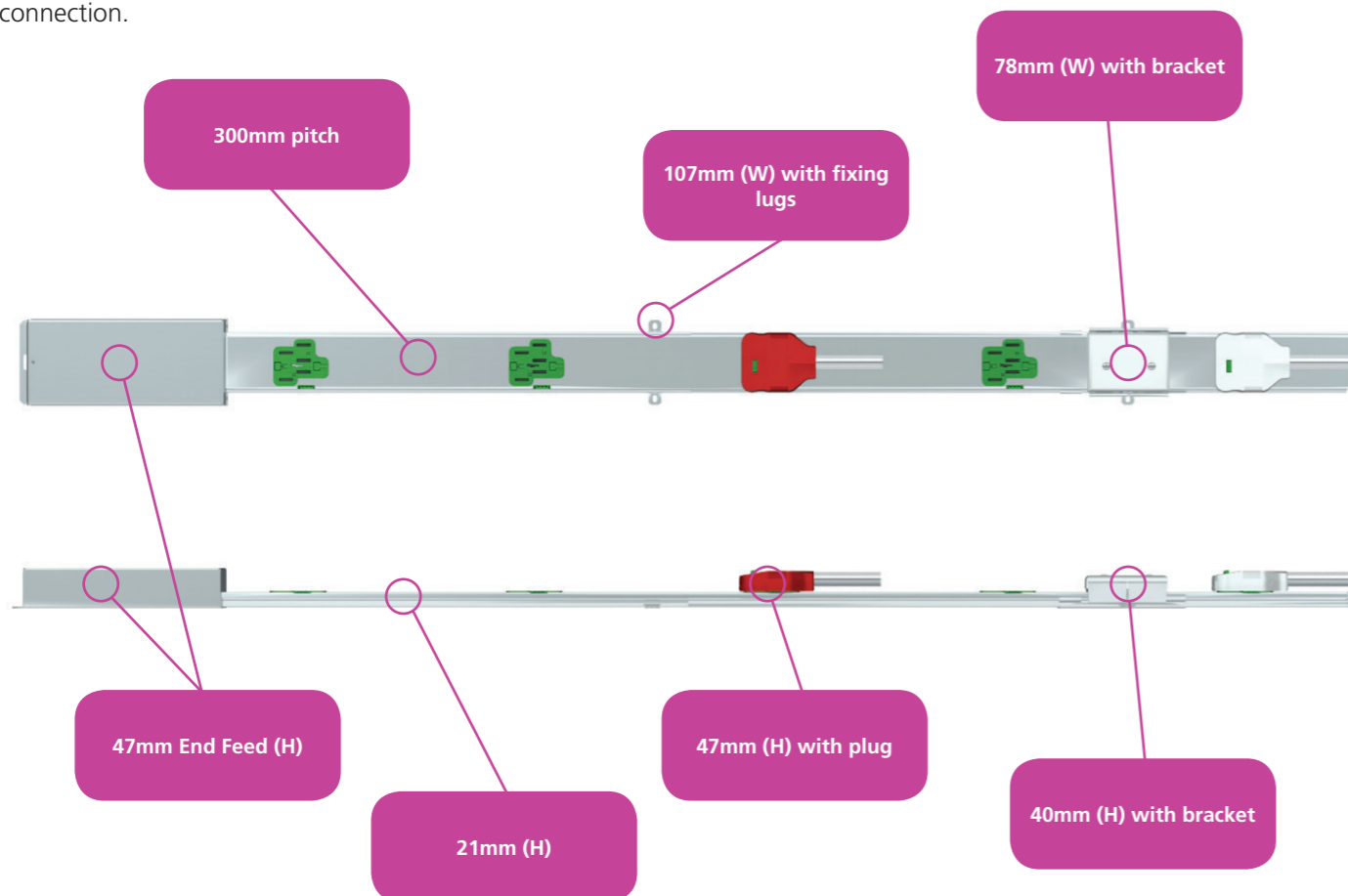
Attention should be given to the total power requirements to avoid exceeding the maximum power rating of the Busbar.

How to install the Busbar

Starting with the feed unit, remove the dust cover over the colour coded socket and simply snap the integral coupler, pre-installed on the busbar, into the feed socket. The next length of track is then fitted to the socket end of the first length of busbar as previously described, this is then repeated for the following lengths until the run is complete. On the final length of busbar section the dust cover supplied is fitted on the final unused coupling point to protect against the ingress of foreign contaminants. The feed unit is then secured via the slots in the base and the busbar every 1200mm (max) by using the mounting brackets provided.

CMD is registered by BSI to BS EN ISO 9001 & BS EN ISO 14001. Betatrak® is designed to comply with regulation 434.2 of BS 7671: 2008 Amd 3 (IEE Wiring Regulations) & 543.7 earthing requirements for the installation of equipment having high protective conductor currents.

The scope of Reg. 543.7.1.3 requires that every final circuit is intended to supply one or more items of equipment, where the total protective conductor current is likely to exceed 10mA. In normal use, shall have a high protective connection.



Betatrak® underfloor busbar

Electrical Characteristics				
Rated Current	63	Amps		
Rated Voltage	240/415	Volts		
Frequency	50	Hz		
Conditional Short Circuit Rating	(Protection device Bs88 fuse)	16	KA	
Max withstand current	10 kA Peak			
Short time withstand current	1200A for 0.4 Sec			
Volt Drops (Line & Neutral)	Busbars	3.2	mV/A/m	
	Feed Unit	0.4	mV/A	
	Track Coupler	0.6	mV/A/m	
	Tap off Connection	0.5	mV/A	
	+4mm ² Cable	11.00	mV/A/m	
	+2.5mm ²	18.00	mV/A/m	
	Flexible Corner Unit	3.6	mV/A	
	+10mm ² Cable (1.2m)	4.7	mV/A/m	
	Earth Fault Loop Impedance	Line to Earth (Housing)	3.0	mΩ/m
		Line to Earth (Bar)	3.2	mΩ/m
Line to Earth (Bar + Housing)		2.5	mΩ/m	
Feed Unit		0.8	mΩ	
Track Coupler		0.6	mΩ	
Tap off Connection		0.6	mΩ	
+4m ² Cable		11.0	mΩ/m	
+2.5mm ² & 4mm ² Cable		14.5	mΩ/m	
Flexible Corner Unit		4.0	mΩ	
+10mm ² Cable		4.7	mΩ/m	

Mechanical Data			
Number of Copper Conductors	2, 3, or 5		
Busbar Cross-section Area	14	mm ²	
Betatrak® Basing Copper Equivalent (Where casing is protective Earth)	14	mm ²	
Cable Termination Capacity	16	mm ²	
Tap off Cable 32Amp (BS 7211)	4.0	mm ²	
Tap off Cable 13Amp fused (BS 7211)	2.5	mm ²	
Tap off Conduit Sizes	Ø16 or Ø20		
Flexible Corner Unit Cable (BS 7211)	10	mm ²	
Flexible Interlink Conduit	Ø25		
Feed Conduit Entry	1 or 2 x Ø25		
IP Rating BS EN 60529	4X		
Minimum void depth (track + tap off)	59	mm	

Material Specification	
Betatrak® Casing	Galvanised Steel
Busbars	High Conductivity Copper
Busbar Insulators & Coupling Mould	Flame Retardant Polycarbonate
Couple Contacts	Copper
Feed Unit Terminals	Brass Silver Plated
Tap off Socket & Plug Mouldings	Flame Retardant Polycarbonate
Tap off Shutter	Polyester
Tap off Plug Ins	Brass
Tap off Cable	LSOH BS 7211
Flexible Corner Cable	Tri Rated BS 6231

Ambient Temperature Control Factors					
Temperature	25C	30C	35C	40C	50C
Factor	1.13	1.07	1.0	0.93	0.75

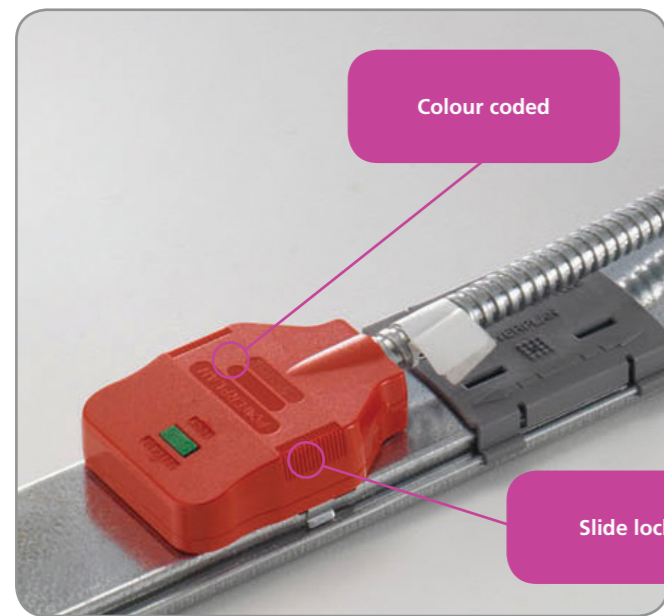
Betatrak product has been independently tested to comply with BS EN 60439-2 2000 & IEC 60439-2: 2000. The product is designed to conform to BS EN 61534-22.

Betatrak® underfloor busbar



Tap offs are colour coded and non-interchangeable between busbar types. The slide locking, positive latching tap off plug prevents accidental disconnection and can be added to or removed from the busbar while the system is live. All 3 metre, 32 Amp tap offs incorporate an unfused plug, and as standard, 16mmØ metal flexible conduit enclosing 3 metres of 4mm² cables. These units are designed to comply with Regulation 434.2.1 of BS 7671:2008 Amd 3. 5 metre unfused tap offs are also available for use with individual track runs that are rated at no more than 32Amp, where the protection of the tap off against both overload and fault current is provided by the track protective device.

CMD tap off units conform to the high integrity protective requirement by virtue of using a protective conductor of 4mm enclosed within a flexible conduit, thus providing additional protection against mechanical damage.



The benefits of using a CMD Tap off

- Choice: a comprehensive range of supply versions
- Flexibility: can be used in new or existing layouts
- Safety: all units are designed to comply with regulation 434.2.1 of BS 7671: 2008 Amd 3
- Convenience: all tap offs are colour coded & non-interchangeable with slide locking and positive latching to prevent accidental disconnection

Tap off units

Socket key codes	Standard earth	Clean earth	Dual circuit	Auxiliary earth	3 phase
3m unfused			PBDX 7283H*		PBTX 5283H**
3m unfused 32 Amp	PBSX 3323H	PBCX 4323H	PBSX 3323H PBCX 4323H	PBAX 3323H	BTX 3323H 1, 2 or 3
3m fused 13 Amp	PBSX 3133H	PBCX 4133H	PBSX 3133H PBCX 4133H	PBAX 3133H	BTX 3133H 1, 2 or 3
5m unfused 28 Amp			PBDX 7283H*		PBTX 5285H**
5m unfused 32 Amp	PBSX 3325H	PBCX 4325H	PBSX 3325H PBCX 4323H	PBAX 3325H	BTX 3325H 1, 2 or 3
5m fused 13 Amp	PBSX 3135H	PBCX 4135H	PBSX 3135H PBCX 4135H	PBAX 3135H	BTX 3135H 1, 2 or 3



Betatrak® underfloor busbar

32 Amp 3 metre tap off

32 Amp 3 metre tap off unit is comprised of an unfused plug with 16mmØ flexible metal conduit with integral 3m x 4mm² cables.

These units are designed to comply with regulations 434.2.1(i) BS 7671:2008 Amd 3 by virtue of the following:

1. Maximum length of cable is <3 metres.
2. Minimum risk of faults as the item is factory assembled and fully tested.
3. Fully protected by flexible steel conduit located within raised access floor that offers further protection.

5 metre tap off unit

Tap off units in excess of 3 metres should only be used if they contain a fuse or the busbar is protected by a 32Amp rated protective device.

Mechanical data	
Tap off cable 32 Amp (BS 7211)	4.0 mm ²
Tap off cable 13 Amp fused (BS 7211)	2.5 mm ²
Tap off conduit sizes	Ø16 or Ø20 mm
Tap off socket & plug mouldings	Flame retardant polycarbonate
Tap off shutter	Polyester
Tap off plug pins	Brass
Tap off cable	LSOH BS 7211
Flexible corner cable	Tri rated BS 6231

Mechanical data	Track type	Tap off type
Standard earth White 63 Amp		
Auxiliary earth Black 63 Amp		
Clean earth (CE) (low noise earth) Red 63 Amp		
3 phase Blue 63 Amp		
Dual circuit (standard/low noise) Green 63 Amp		

All tap off units comply with 17th Edition Wiring Regulations Section 543.7 (High Integrity Earthing).

Numerous configurations of tap off units including fuse options are available on request. Longer lengths available on request. CMD tap off units conform to the high integrity protective requirement by virtue of using a protective conductor of 4mm enclosed within a flexible conduit, thus providing additional protection against mechanical damage.

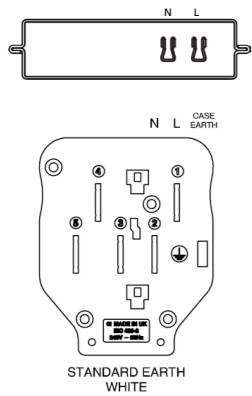
*These tap offs have 2 circuits (1 x standard & 1 x clean earth) rated at 25 Amp

**These tap offs are 3 Phase (L1, L2, L3, N, E) rated at 28 Amp

Betrak® underfloor busbar

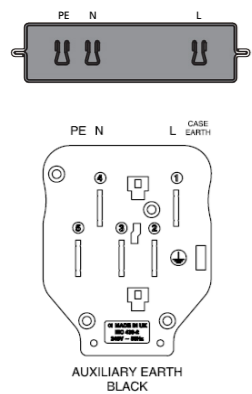


Standard Earth - 63 Amp



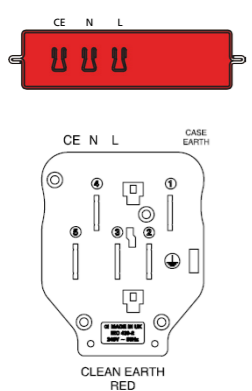
Code	Description
Betrak®	
PBST3336	3.6 Metre Length
PBST3324	2.4 Metre Length
PBST3318	1.8 Metre Length
PBST3312	1.2 Metre Length
PBSF3010/S	Feed Unit c/w End Stop
PBSB3000/S	Flexible Corner Kit
PBSB3031H/S	Flexible Corner - 1 Metre
PBSB3032H/S	Flexible Corner - 2 Metre
Tap Offs	
PBSX3323H	3 Metre Tap off 32 Amp Unfused
PBSX3325H	5 Metre Tap off 32 Amp Unfused
PBSX3133H	3 Metre Tap off 13 Amp Fused
PBSX3135H	5 Metre Tap off 13 Amp Fused

Auxiliary Earth - 63 Amp



Code	Description
Betrak®	
PBAT3336	3.6 Metre Length
PBAT3324	2.4 Metre Length
PBAT3318	1.8 Metre Length
PBAT3312	1.2 Metre Length
PBAF3010/S	Feed Unit c/w End Stop
PBAB3000/S	Flexible Corner Kit
PBAB3031H/S	Flexible Corner - 1 Metre
PBAB3032H/S	Flexible Corner - 2 Metre
Tap Offs	
PBAX3323H	3 Metre Tap off 32 Amp Unfused
PBAX3325H	5 Metre Tap off 32 Amp Unfused
PBAX3133H	3 Metre Tap off 13 Amp Fused
PBAX3135H	5 Metre Tap off 13 Amp Fused

Clean Earth (CE) - 63 Amp

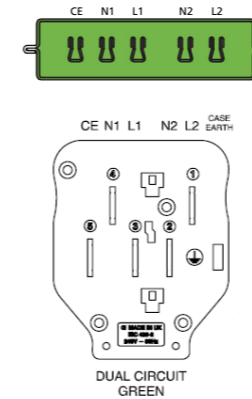


Code	Description
Betrak®	
PBCT4336	3.6 Metre Length
PBCT4324	2.4 Metre Length
PBCT4318	1.8 Metre Length
PBCT4312	1.2 Metre Length
PBCF4010/S	Feed Unit c/w End Stop
PBCB4000/S	Flexible Corner Kit
PBCB4031H/S	Flexible Corner - 1 Metre
PBCB4032H/S	Flexible Corner - 2 Metre
Tap Offs	
PBCX4323H	3 Metre Tap off 32 Amp Unfused
PBCX4325H	5 Metre Tap off 32 Amp Unfused
PBCX4133H	3 Metre Tap off 13 Amp Fused
PBCX4135H	5 Metre Tap off 13 Amp Fused



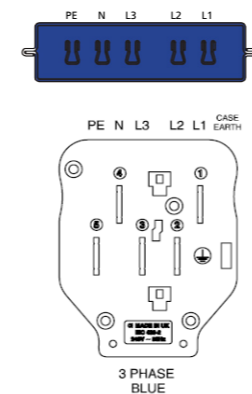
Betrak® underfloor busbar

Dual Circuit - 63 Amp



Code	Description
Betrak®	
PBDT6336	3.6 Metre Length
PBDT6324	2.4 Metre Length
PBDT6318	1.8 Metre Length
PBDT6312	1.2 Metre Length
PBDF6010	Feed Unit c/w End Stop
PBDB6000	Flexible Corner Kit
PBDB6031H	Flexible Corner - 1 Metre
PBDB6032H	Flexible Corner - 2 Metre
Tap Offs	
PBDX7283H	3 Metre Tap off 25 Amp Unfused Dual Circuit
PBDX7285H	5 Metre Tap off 25 Amp Unfused Dual Circuit

3 Phase - 63 Amp



Code	Description
Betrak®	
PBTT5336	3.6 Metre Length
PBTT5324	2.4 Metre Length
PBTT5318	1.8 Metre Length
PBTT5312	1.2 Metre Length
PBTF5010	Feed Unit c/w End Stop
PBTB5000	Flexible Corner Kit
PBTB5031H	Flexible Corner - 1 Metre
PBTB5032H	Flexible Corner - 2 Metre
Tap Offs	
PBTX3323H-1	3 Metre Tap off 32 Amp Unfused
PBTX3325H-1	5 Metre Tap off 32 Amp Unfused
PBTX3133H-1	3 Metre Tap off 13 Amp Fused
PBTX3135H-1	5 Metre Tap off 13 Amp Fused

NB: Add suffix -1, -2 or -3 to indicate required phase configuration of the above 3 Phase Tap Offs
E.G. PBTX3323H-1

Non Standard Tap Offs

Code	Description
Betrak® Non Standard Tap Offs 32 Amp Neutrik Tap Offs	
PPA8284	5m, 32 Amp unfused, Std Earth tap off c/w 32 Amp Neutrik (For Std earth & Std earth/607)
PPA7842	5m, 32 Amp unfused, Std Auxiliary Earth Tap off c/w 32 Amp Neutrik (For Std earth & Std earth/607)
PPA8306	5m, 32 Amp unfused, Clean Earth Tap off c/w 32 Amp Neutrik (For C/E & C/E 607)
Alphatrak® Non Standard Tap Offs Standard Earth	
PASX3323H	3 Metre Tap off 32 Amp Unfused
PASX3325H	5 Metre Tap off 32 Amp Unfused
Alphatrak® Non Standard Tap Offs Clean Earth	
PACX4323H	3 Metre Tap off 32 Amp Unfused
PACX4325H	5 Metre Tap off 32 Amp Unfused