

Contour metal power and data



If you still want the modern, curved appearance of Contour without the restrictions in length, then our new metal Contour with its sleek silver anodised metal extrusion is the one for you.

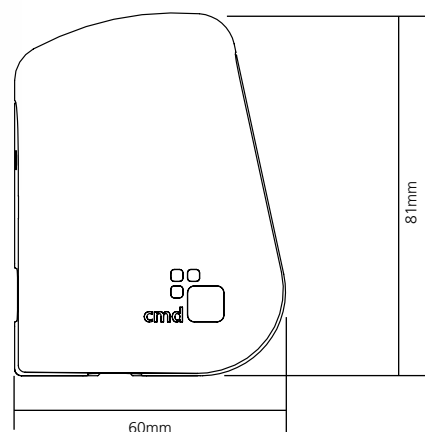


power
modules

Lateral fuses with a choice of 3.15A or 5A to comply with BS 6396:2008

Anodised aluminium extruded body

Choose from power, USB charging, data, audio and international sockets



- Extruded silver metal body for longer lengths
- Power and data cables all exit from the back of the unit unless on a slatwall/tool rail where cables exit from the bottom of the unit
- Unit complies with BS 5733
- All standard options are supplied with a 1m mains lead to 3 pole connector
- Requires a separate mains lead if connected directly to a socket
- Fixing via Contour C clamp or adhesive fixing kit
- Segregation between power and data to comply with BS 6396
- No visible fixing screws



Build it your way

Please see page 47 for more information.



Manage your energy

Configure to allow energy to be monitored and controlled with Footprint. See page 155 for more details.

Note: CMD cannot accept any responsibility or liability for providing category 6 performance in products supplied.

Fuses: Only accessible after removal of equipment plug. Lead lengths shown will be the conductor length and not the distance from the end of the module to the plug. For example, a 3m prewired power lead will be approximately 2.875m as 125mm will be internal for the termination. This is also applicable for data leads. Data fascias may be subject to colour change.

Cables: White and grey modules are supplied with white cables and black modules are supplied with black cables.

HDMI: CMD cannot accept any responsibility or liability for providing HDMI performance in products supplied over 10m in length.

Contour metal power and data



Black



Grey



White

Code	Colour	Description
94MCP02BGST	Black	Contour 1 x power, 1m mains lead to 3 pole connector, 1 x Twin port 2Amp USB Charger
94MCP02GGST	Grey	
94MCP02WGST	White	
94MPS01BGST	Black	Contour 2 x power, 1m mains lead to 3 pole connector
94MPS01GGST	Grey	
94MPS01WGST	White	
94MCP01BGST	Black	Contour 2 x power, 1m mains lead to 3 pole connector, 1 x Twin port 2Amp USB Charger
94MCP01GGST	Grey	
94MCP01WGST	White	
94MUS03BGST	Black	Contour 2 x power, 1m mains lead to 3 pole connector, 2 x RJ45 data Cat6
94MUS03GGST	Grey	
94MUS03WGST	White	
94MPS02BGST	Black	Contour 4 x power, 1m mains lead to 3 pole connector
94MPS02GGST	Grey	
94MPS02WGST	White	

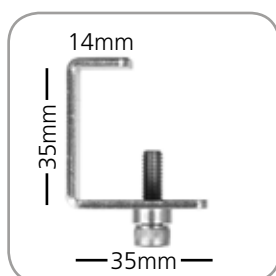
Note: Separate data cables must be purchased with our new rear access data sockets. Other cable lengths are available on request.

C clamp

We recommend using 2 x C clamps for any module with more than 2 sockets. Fits desk thickness between 20mm-32mm

Code

440371

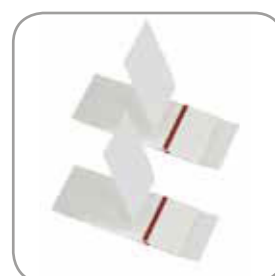


Adhesive Fixing Kit

Adhesive Kit, 1 Kit required per module

Code

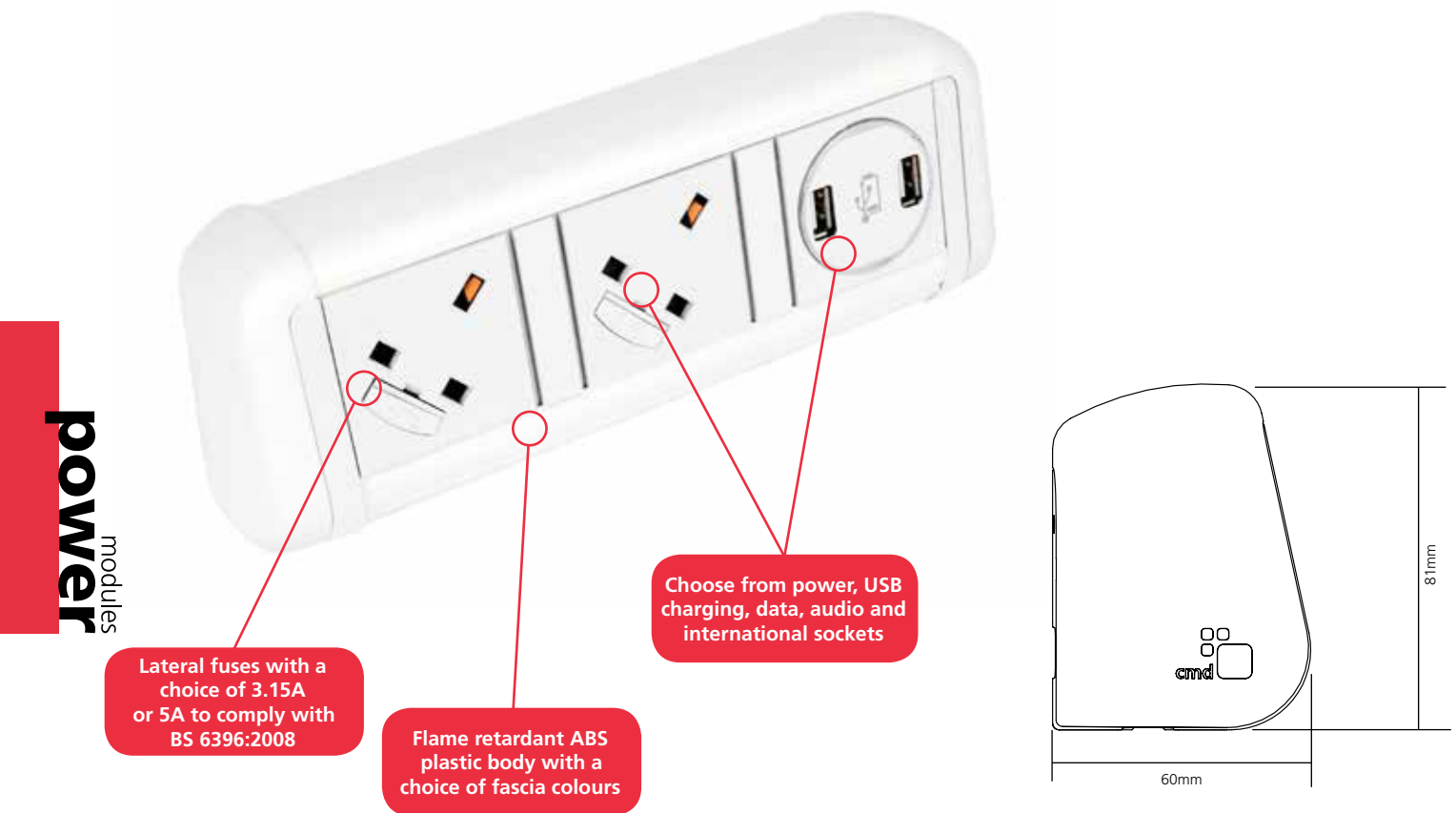
440006



Contour power and data



Contour has a modern, curved appearance displaying many design features like our lateral fuse carrier, internal segregation between power and data and comes complete with plastic clips on the covers so there are no visible fixing screws and fully compliant to current safety regulations.



power
modules

Lateral fuses with a choice of 3.15A or 5A to comply with BS 6396:2008

Flame retardant ABS plastic body with a choice of fascia colours

Choose from power, USB charging, data, audio and international sockets

- Power and data cables all exit from the back of the unit unless on a slatwall/tool rail where cables exit from the bottom of the unit
- Unit complies with BS 5733
- All standard options are supplied with a 1m mains lead to 3 pole connector
- Requires a separate mains lead if connected directly to a socket
- Fixing via Contour C clamp or adhesive fixing kit



Build it your way

Please see page 47 for more information.



Manage your energy

Configure to allow energy to be monitored and controlled with Footprint. See page 155 for more details.
*Please note that 6 tiles is the maximum with a maximum length of 362.5mm.

Note: CMD cannot accept any responsibility or liability for providing category 6 performance in products supplied.

Fuses: Only accessible after removal of equipment plug. Lead lengths shown will be the conductor length and not the distance from the end of the module to the plug. For example, a 3m prewired power lead will be approximately 2.875m as 125mm will be internal for the termination. This is also applicable for data leads. Data fascias may be subject to colour change.

Cables: White and grey modules are supplied with white cables and black modules are supplied with black cables.

HDMI: CMD cannot accept any responsibility or liability for providing HDMI performance in products supplied over 10m in length.



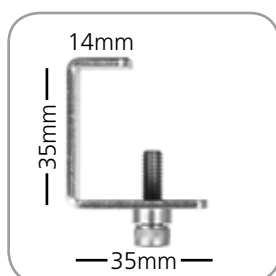
Code	Colour	Description
94CP01GST	Black/White	Contour 1 x power, 1m mains lead to 3 pole connector, 1 x Twin port 2Amp USB Charger
94CP02GST	Grey/White	
94CP03GST	All White	
94CP04GST	All Black	
94PS04GST	Black/White	Contour 2 x power, 1m mains lead to 3 pole connector
94PS01GST	Grey/White	
94PS07GST	All White	
94PS10GST	All Black	
94CP05GST	Black/White	Contour 2 x power, 1m mains lead to 3 pole connector, 1 x Twin port 2Amp USB Charger
94CP06GST	Grey/White	
94CP07GST	All White	
94CP08GST	All Black	
94U048GST	Black/White	Contour 2 x power, 1m mains lead to 3 pole connector, 2 x RJ45 data Cat6
94U049GST	Grey/White	
94U050GST	All White	
94U051GST	All Black	
94PS06GST	Black/White	Contour 4 x power, 1m mains lead to 3 pole connector
94PS03GST	Grey/White	
94PS09GST	All White	
94PS11GST	All Black	

Note: Separate data cables must be purchased with our new rear access data sockets. Other cable lengths are available on request.

C clamp

We recommend using 2 x C clamps for any module with more than 2 sockets. Fits desk thickness between 20mm-32mm

Code
440371



Adhesive Fixing Kit

Adhesive Kit, 1 Kit required per module

Code
440006

