

Cygnus Monitor Arm

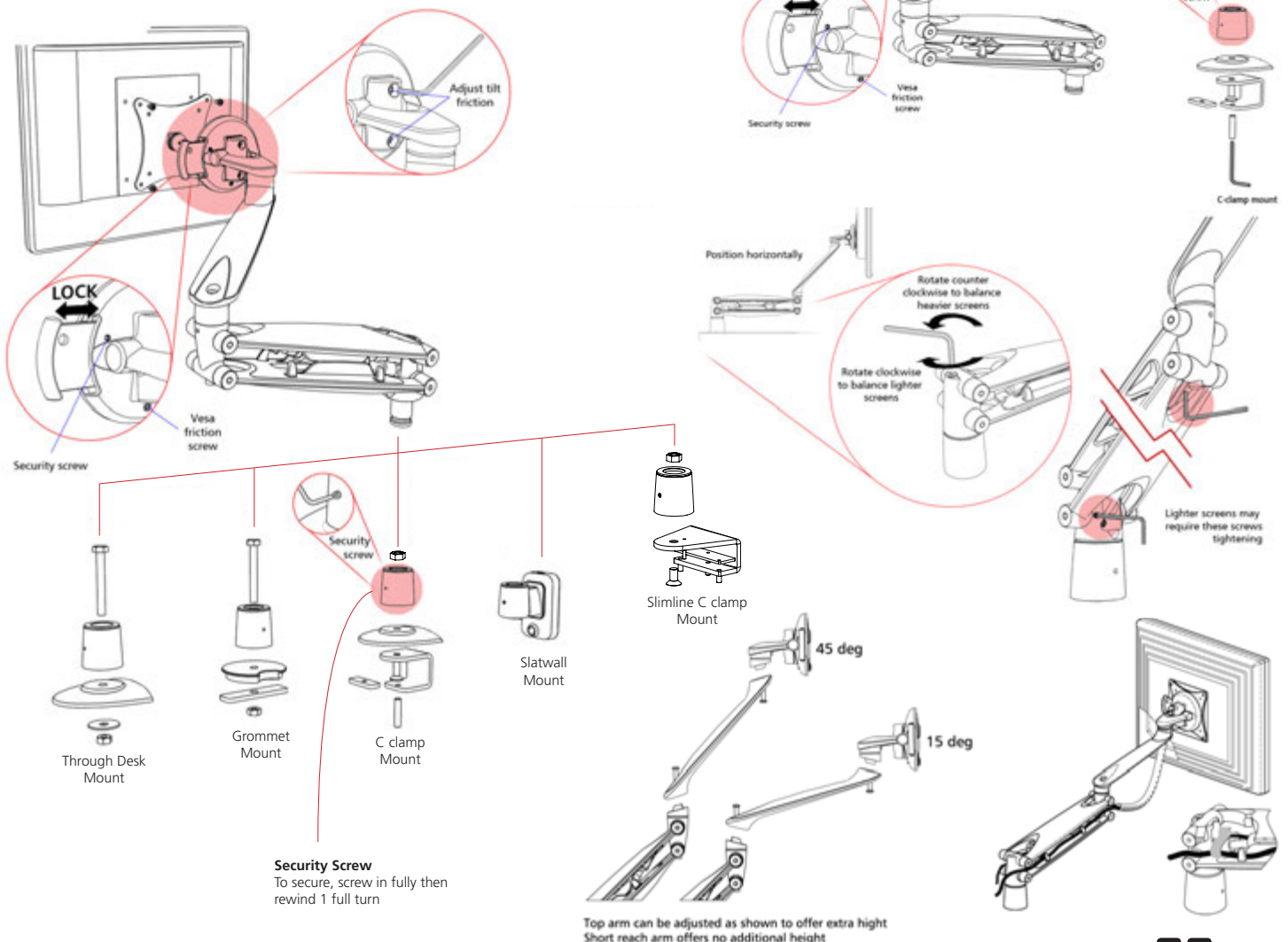
Description

Cygnus is a flat screen monitor arm featuring a unique blend of innovative engineering and contemporary styling. It offers all the benefits you would expect of a premium adjustable gas lift arm with the added benefit of an extensive range of useful features.

Cleaning Storage & Maintenance

Small Parts	This product does contain small parts & should be kept out of reach from young children while being assembled
Service Components	Available to order
Cleaning & Maintenance	Damp cloth, no abrasives or solvents to be used on the cosmetic surfaces. Never use strong detergents or abrasive cleaners as may damage surface finish
Handling & Storage	Do not drop or expose to moisture

Assembly Instructions



Warning

Ensure desk surface / partition / is suitable to take the weight of the arm

Do not use this product for any purpose other than the one it was designed for

Hold monitor tightly when making any adjustments

Care should be taken to avoid trapping fingers

Do not attach monitor before assembling the arm

Do not dismantle or remodel the arms

Maximum weight supported by monitor arm is 8kg

Minimum weight supported by monitor arm is 2kg

Cygnus Monitor Arm



Cygnus

Freedom to move

When installing the arm onto the C clamp it is important that the following procedure is followed:

- Fix the C clamp securely to the desk by aligning the three grub screws with the spreader plate provided.
- Insert the shaft of the lower section of the arm into the plastic cup of the C clamp.
- Secure the arm by slowly tightening the allen grub screw (Do not over tighten).
- When the grub screw stops rotating you must rewind a full 360° to prevent the grub screw making contact with the shaft of the lower section of the arm.

Failure to follow this installation procedure may cause damage to the arm and may invalidate your warranty.

