

Eclipse Power Module

Description

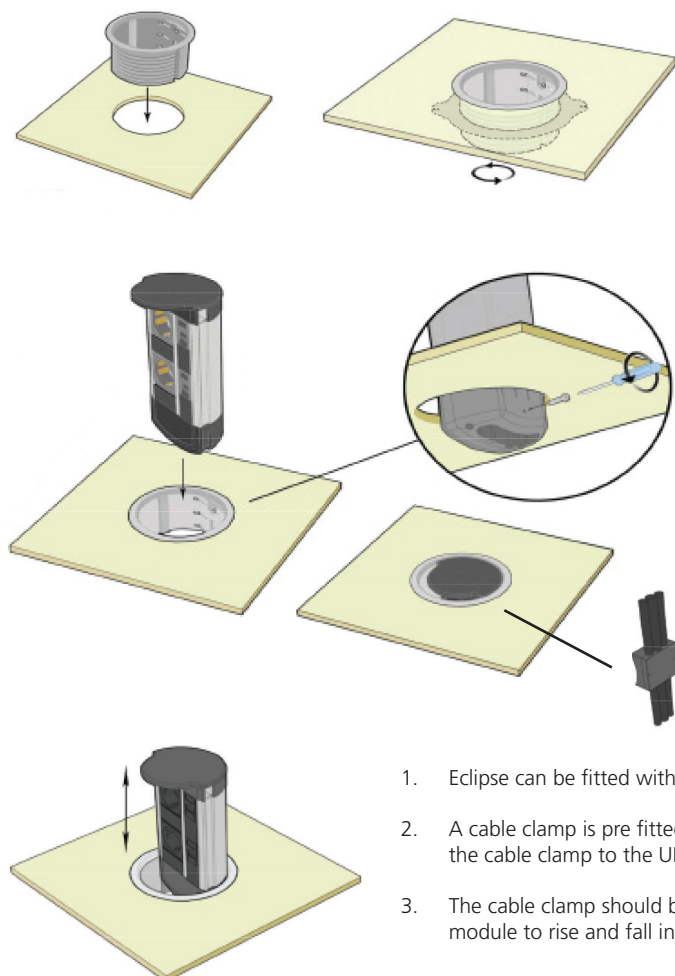
A through desk power and data module that pulls up from the work surface and pushes back down to a flush position when not in use.

Note: Provided with 13A UK Plug

Cleaning Storage & Maintenance

Small Parts	This product does contain small parts & should be kept out of reach from young children while being assembled
Service Components	Available to order
Cleaning & Maintenance	Damp cloth, no abrasives or solvents to be used on the cosmetic surfaces. Never use strong detergents or abrasive cleaners as may damage surface finish
Handling & Storage	Do not drop or expose to moisture

Assembly Instructions



Installation

1. Cut a hole (Ø) 114.7mm (+0.2mm) through the work surface in the desired location ensuring there is sufficient clearance between the unit and desk sub frame. Alternatively remove any blanking pieces from the manufactures pre-cut hole.
2. Release the core module from the barrel by holding barrel and pulling it out from the top. Insert the barrel into the work surface and tighten lock nut firmly to underside of work surface, ensuring not to over tighten as this will affect the mechanism.
3. Feed cables through the barrel from the top and inset core module and locate the module into the vertical guides. Gently press module down until it clicks and the top is flush with barrel flange.

Operation

1. Pull the unit up until it clicks into stop position
2. Inset plugs as required, taking care to support the core module by putting your hand behind it.
3. When your task is complete remove plugs as required, remembering to support the core module from behind.
4. Push core module gently down into barrel until top is flush with barrel flange.

1. Eclipse can be fitted with optional retaining screw to prevent module from being pulled out of barrel.
2. A cable clamp is pre fitted to the cables at the correct distance from the barrel. Attach the FLAT side of the cable clamp to the UNDERSIDE of the desk using the double-sided self adhesive strip provided.
3. The cable clamp should be positioned approx 100mm from the barrel creating a loop to allow the module to rise and fall in the barrel without stressing the cable.