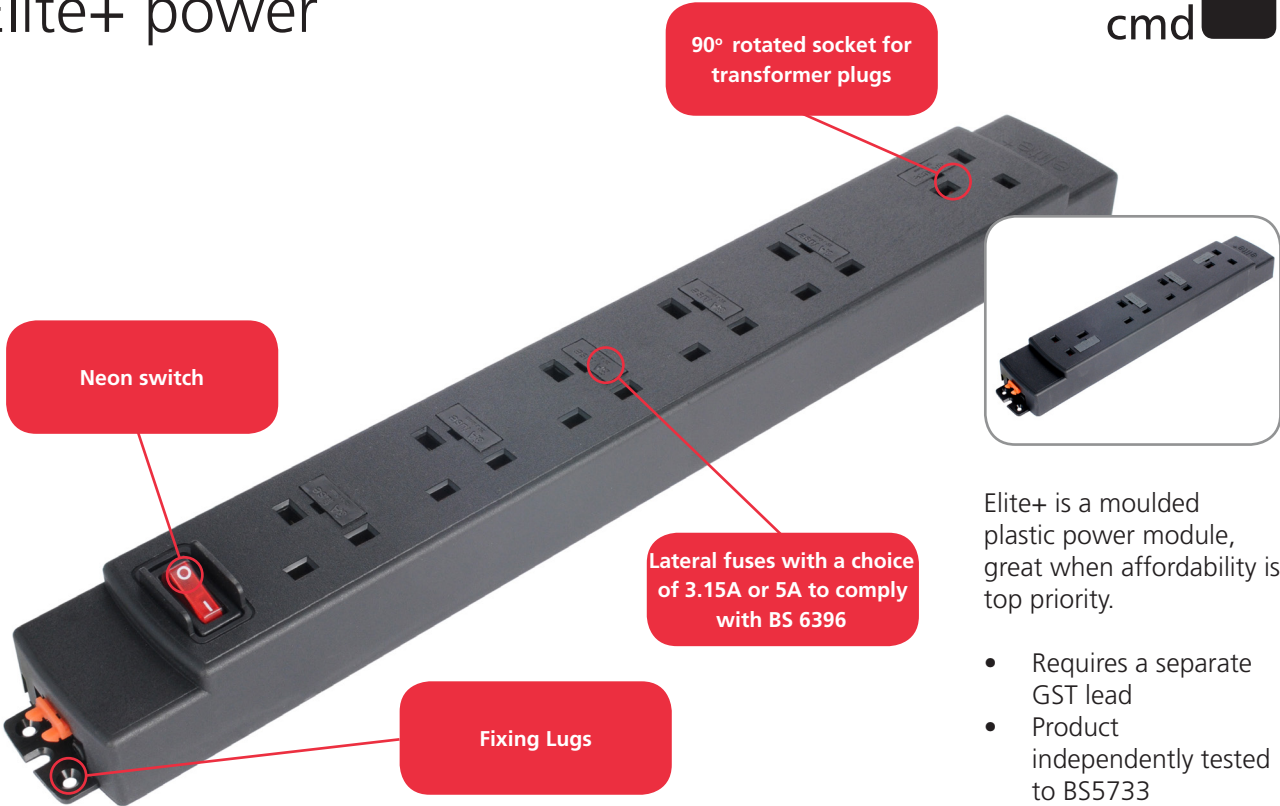


Elite+ power



Elite+ is a moulded plastic power module, great when affordability is top priority.

- Requires a separate GST lead
- Product independently tested to BS5733

Code	Description
92K005GST	2x power sockets individually fused 3.15A with male 3 Pole Connector input & female 3 Pole Connector output. EW
92K011GST	2x power sockets individually fused 5A with male 3 Pole Connector input & female 3 Pole Connector output. EW
92K006GST	2x power sockets with neon switches individually fused 3.15A with male 3 Pole Connector input & female 3 Pole Connector output. EW
92K012GST	2x power sockets with neon switches individually fused 5A with male 3 Pole Connector input & female 3 Pole Connector output. EW
92K007GST	3x power sockets individually fused 3.15A with male 3 Pole Connector input & female 3 Pole Connector output. ENW
92K013GST	3x power sockets individually fused 5A with male 3 Pole Connector input & female 3 Pole Connector output. ENW
92K002GST	4x power sockets individually fused 3.15A with male 3 Pole Connector input & female 3 Pole Connector output. ENNW
92K008GST	4x power sockets individually fused 5A with male 3 Pole Connector input & female 3 Pole Connector output. ENNW
92K004GST	4x power sockets individually fused 3.15A with male 3 Pole Connector input & female 3 Pole Connector output. NNNN
92K010GST	4x power sockets individually fused 5A with male 3 Pole Connector input & female 3 Pole Connector output. NNNN
92K003GST	4x power sockets one neon switch, individually fused 3.15A with male 3 Pole Connector input & female 3 Pole Connector output. NNNN
92K009GST	4x power sockets one neon switch, individually fused 5A with male 3 Pole Connector input & female 3 Pole Connector output. NNNN
92K001GST	6x power sockets one neon switch, individually fused 3.15A with male 3 Pole Connector input. *No output. NNNNNW

All products have 300mm earth lead to M5 ring

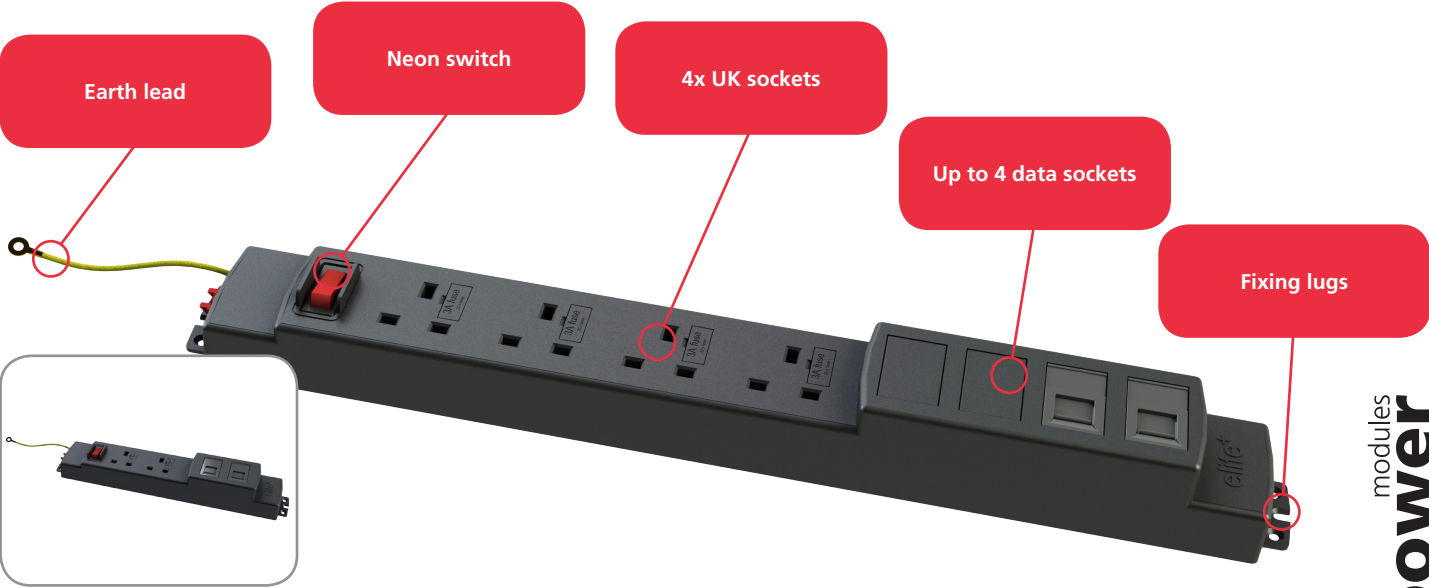
Socket Orientation: N – is North, E – is East & W – is West

**Please note:** Fuses only accessible after removal of equipment plug. \*Complies with BS6396.

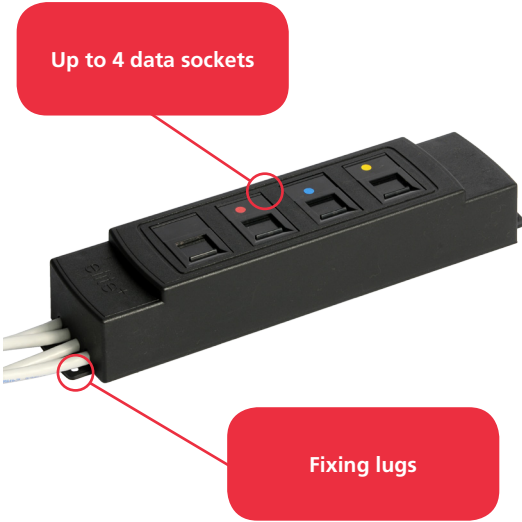


Elite+ power and data

These combined power and data modules have been designed to enable customers to configure their own data needs without the associated risks of exposure to an opened power module.



Code	Description
92KD01GST	2x Power sockets one neon switch and 2x Data Compartment (Empty)
92KD02GST	2x Power sockets one neon switch and 2x RJ45 Cat6 data sockets with 3m data leads
92KD03GST	2x Power sockets one neon switch and 2x RJ45 Cat6 data sockets with 5m data leads
92KD04GST	2x Power sockets one neon switch and 2x RJ45 Cat6 data sockets with 7m data leads
92KD05GST	4x Power sockets one neon switch and 4x Data Compartment (Empty)
92KD06GST	4x Power sockets one neon switch and 2x RJ45 Cat6 data sockets with 3m data leads 2x Data Compartment (Empty)
92KD07GST	4x Power sockets one neon switch and 2x RJ45 Cat6 data sockets with 5m data leads 2x Data Compartment (Empty)
92KD08GST	4x Power sockets one neon switch and 2x RJ45 Cat6 data sockets with 7m data leads 2x Data Compartment (Empty)
92K014	Separate Data Module x 4 compartment - Empty Shell
92K018	2x RJ45 CAT6 data sockets with 3m data leads
92K020	4x RJ45 CAT6 data sockets with 3m data leads



Starter Cable 13A UK Plug to Female 3 Pole Connector

Code Black	Code White	Length
601120GST	601220GST	2m
601130GST	601230GST	3m
601150GST	601250GST	5m

Other lead lengths are available. Please see page 84 for full details.

Note: Certain configurations can accommodate Cat6a Data sockets (contact us for further information)

Please note that CAT6 is backwards compatible. CMD cannot accept any responsibility or liability for providing CAT6 performance in products supplied. We will however fit CAT6 specification components where specified.