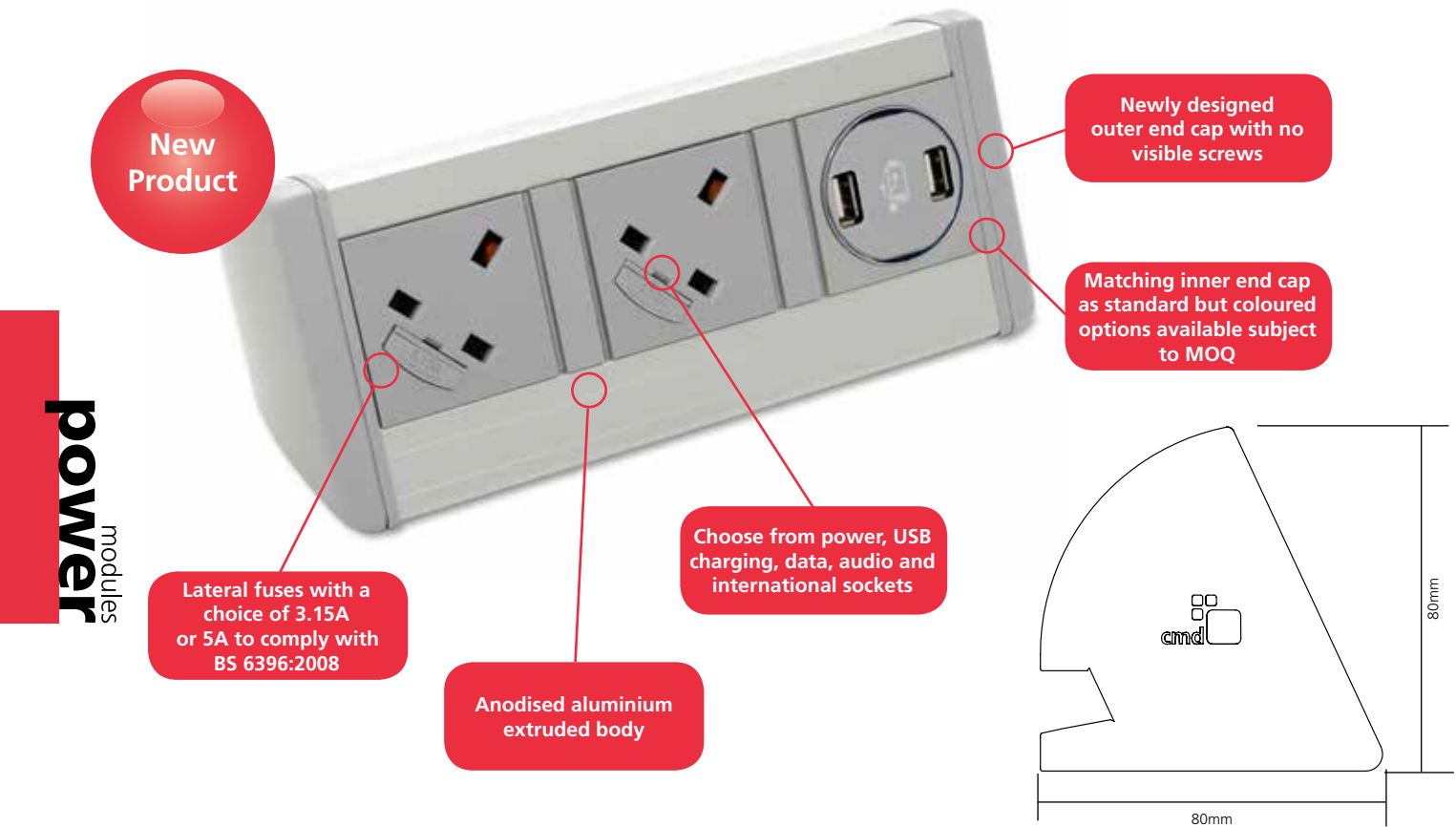


# New Harmony power and data



Harmony is a versatile desk power solution, specifically designed to meet the increasing power and everyday communication needs of a working office. The Harmony features integral fuses which are fully compliant to current safety regulations and is configured with segregated power & data choices to suit different workstation requirements. Harmony can be used in conjunction with our under desk modules to provide greater power solutions and is fitted to the edge of desk with C clamps or adhesive kit making it functional yet non-intrusive to the working desk.



**power** modules

- Anodised aluminium extruded body available in silver or painted black
- Choice of Black, Grey or White fascias/end caps
- Fully segregated power and data
- All UK sockets feature integral fuses. Choice of 3.15A or 5A fuses are available to comply with BS 6396
- All standard options are supplied with a 1m mains lead to male 3 pole connector. Requires a separate mains lead if passing from a 13A socket
- Tested to comply BS 5733
- Fixing via standard C clamps or adhesive fixing kit

**Customise me** Build it your way

Please see page 47 for more information.

**Manage your energy**

Configure to allow energy to be monitored and controlled with Footprint. See page 155 for more details.

Note: CMD cannot accept any responsibility or liability for providing category 6 performance in products supplied.

Fuses: Only accessible after removal of equipment plug. Lead lengths shown will be the conductor length and not the distance from the end of the module to the plug. For example, a 3m prewired power lead will be approximately 2.875m as 125mm will be internal for the termination. This is also applicable for data leads. Data fascias may be subject to colour change.

Cables: White and grey modules are supplied with white cables and black modules are supplied with black cables.

HDMI: CMD cannot accept any responsibility or liability for providing HDMI performance in products supplied over 10m in length.

# New Harmony power and data



Code	Colour	Description
8400001	Black/Silver	Harmony 1 x power, 1m mains lead to 3 pole connector, 1 x Twin port 2Amp USB Charger
8400002	Grey/Silver	
8400003	White/Silver	
8400005	Black/Silver	Harmony 2 x power, 1m mains lead to 3 pole connector
8400006	Grey/Silver	
8400007	White/Silver	
8400009	Black/Silver	Harmony 2 x power, 1m mains lead to 3 pole connector, 1 x Twin port 2Amp USB Charger
8400010	Grey/Silver	
8400011	White/Silver	
8400013	Black/Silver	Harmony 2 x power, 1m mains lead to 3 pole connector, 2 x RJ45 data Cat6
8400014	Grey/Silver	
8400015	White/Silver	
8400017	Black/Silver	Harmony 4 x power, 1m mains lead to 3 pole connector
8400018	Grey/Silver	
8400019	White/Silver	

The newly designed double end cap system presents a number of options for contrasting inner end caps whether this be using our standard colours, our new orange, cyan and lime or choosing \*bespoke colours to compliment your brand. \*Bespoke colours are subject to minimum order quantities and lead times.

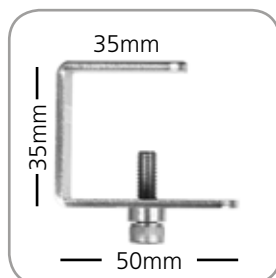


Note: Separate data cables must be purchased with our new rear access data sockets. Other cable lengths are available on request.

Code	Description
161124	3m Cat 6 data cable. Male to male connector.
161239	2m USB data cable. Male to male connector.
161092	2m HDMI data cable. Male to male connector.

### C clamp

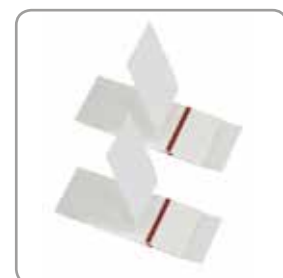
We recommend using 2 x C clamps for any module with more than 2 sockets. Fits desk thickness of 20-32mm



Code
440005

### Adhesive Fixing Kit

Adhesive Kit, 1 Kit required per module



Code
440006