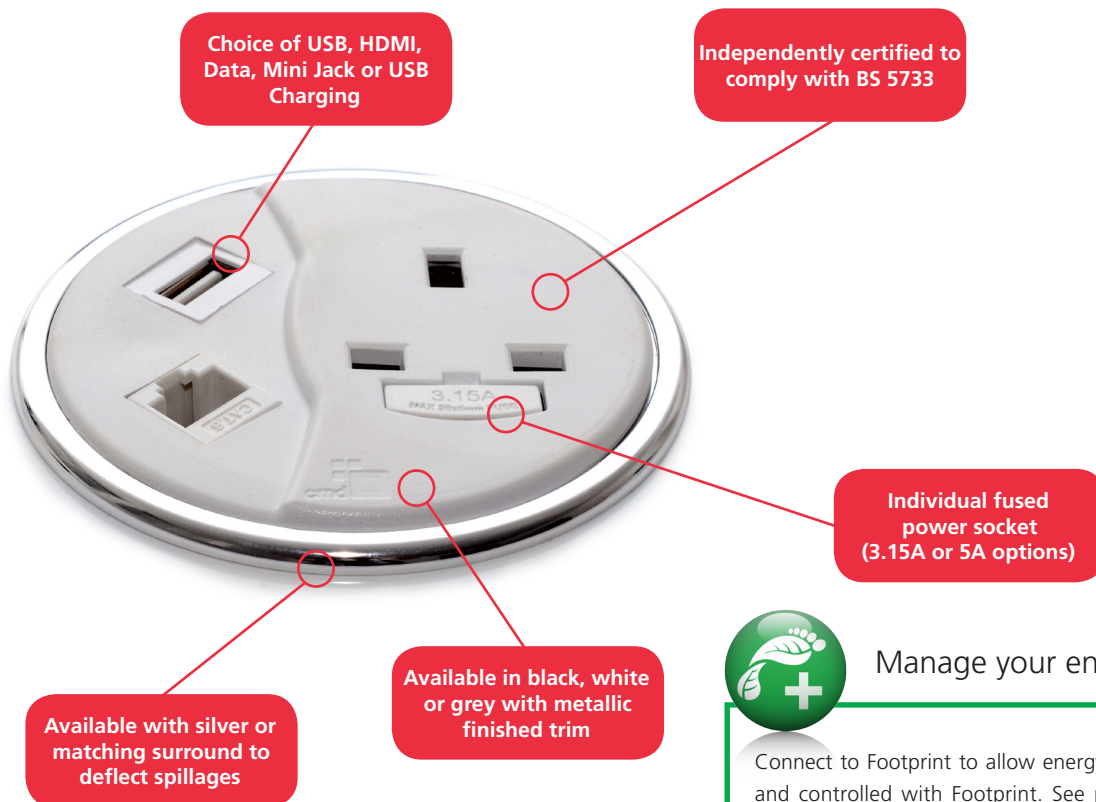


With its innovative design, PortHole is ideal for adapting an existing 80mm cable hole to allow a single power socket and a choice of keystones to be fitted to a desk with a simple screw fit mechanism.

## PortHole Power, Data and USB Charging Module

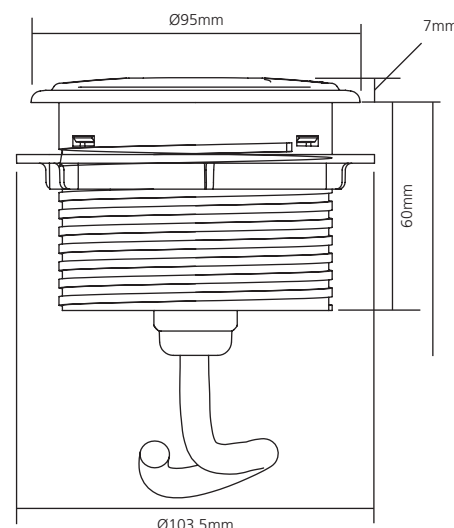


### Manage your energy

Connect to Footprint to allow energy to be monitored and controlled with Footprint. See page 73 for more details.

### Features

- Available with a choice of black, white and grey plastic fascia surrounded by a metallic finished trim
- Unit complies with BS 5733
- All standard options are supplied with a 1m mains lead to 3 pole connector (3m data lead and 2m USB lead where appropriate)
- Requires a separate mains lead if connected directly to a wall or floor socket
- Easy to retrofit, incorporates an under desk, hand tightened barrel nut to fix unit in place
- USB charging option complies with the latest charging standard (BS EN 62684 Interoperability specifications of common external power supply (EPS) for use with data-enabled mobile telephones)
- Designed to fit any desk thickness between 12mm and 50mm



Cables: White and grey modules are supplied with white cables and black modules are supplied with black cables.

Data Cables: CMD cannot accept any responsibility or liability for providing category 6 performance in products supplied. CMD cannot accept any responsibility or liability for providing HDMI performance in products supplied over 5m in length.

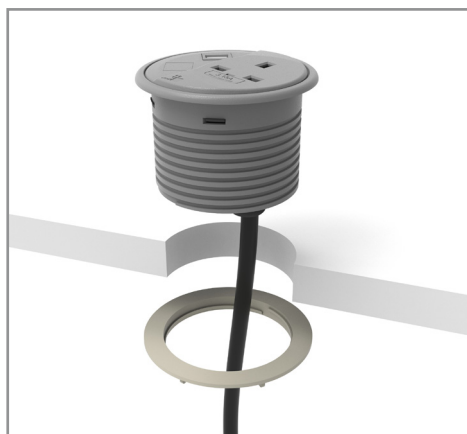
Fuses: Only accessible after removal of equipment plug. Lead lengths shown will be the conductor length and not the distance from the end of the module to the plug. For example, a 3m prewired power lead will be approximately 2.875m as 125mm will be internal for the termination. This is also applicable for data leads. Data fascias may be subject to colour change.



PortHole is now available with matching surround. Please speak to a member of our sales team for more information.

Code	Colour	Description
90P001BGST	Black/Silver Surround	1 x UK Power Socket
90P001GGST	Grey/Silver Surround	Power socket 3.15A individually fused with 1m mains lead to 3 Pole connector
90P001WGST	White/Silver Surround	
90U001BGST	Black/Silver Surround	1 x UK Power Socket, 1 x RJ45 Cat6 Socket
90U001GGST	Grey/Silver Surround	Power socket 3.15A individually fused with 1m mains lead to 3 Pole connector and 3m data lead
90U001WGST	White/Silver Surround	
90U002BGST	Black/Silver Surround	1 x UK Power Socket, 2 x RJ45 Cat6 Sockets
90U002GGST	Grey/Silver Surround	Power socket 3.15A individually fused with 1m mains lead to 3 Pole connector and 2 x 3m data leads
90U002WGST	White/Silver Surround	
90U003BGST	Black/Silver Surround	1 x UK Power Socket, 1 x USB Socket (Data transfer)
90U003GGST	Grey/Silver Surround	Power socket 3.15A individually fused with 1m mains lead to 3 Pole connector and 2m USB lead
90U003WGST	White/Silver Surround	
90U004BGST	Black/Silver Surround	1 x UK Power Socket, 2 x USB Sockets (Data transfer)
90U004GGST	Grey/Silver Surround	Power socket 3.15A individually fused with 1m mains lead to 3 Pole connector and 2 x 2m USB leads
90U004WGST	White/Silver Surround	
90U005BGST	Black/Silver Surround	1 x UK Power Socket, 1 x RJ45 Cat6 Socket, 1 x USB Socket (Data transfer)
90U005GGST	Grey/Silver Surround	Power socket 3.15A individually fused with 1m mains lead to 3 Pole connector, 3m data lead and 2m USB lead
90U005WGST	White/Silver Surround	

HDMI sockets, Mini Jack Keystones and 5A fuses are also available. Cat6 socket is fully backward compatible.



## Data Cables

Note: Separate data cables must be purchased when data sockets are required. Other cable lengths are available on request.

Code	Description
161713	3m Cat 6 data cable. Male to male connector
161239	2m USB data cable. Male to male connector
161718	2m HDMI data cable. Male to male connector