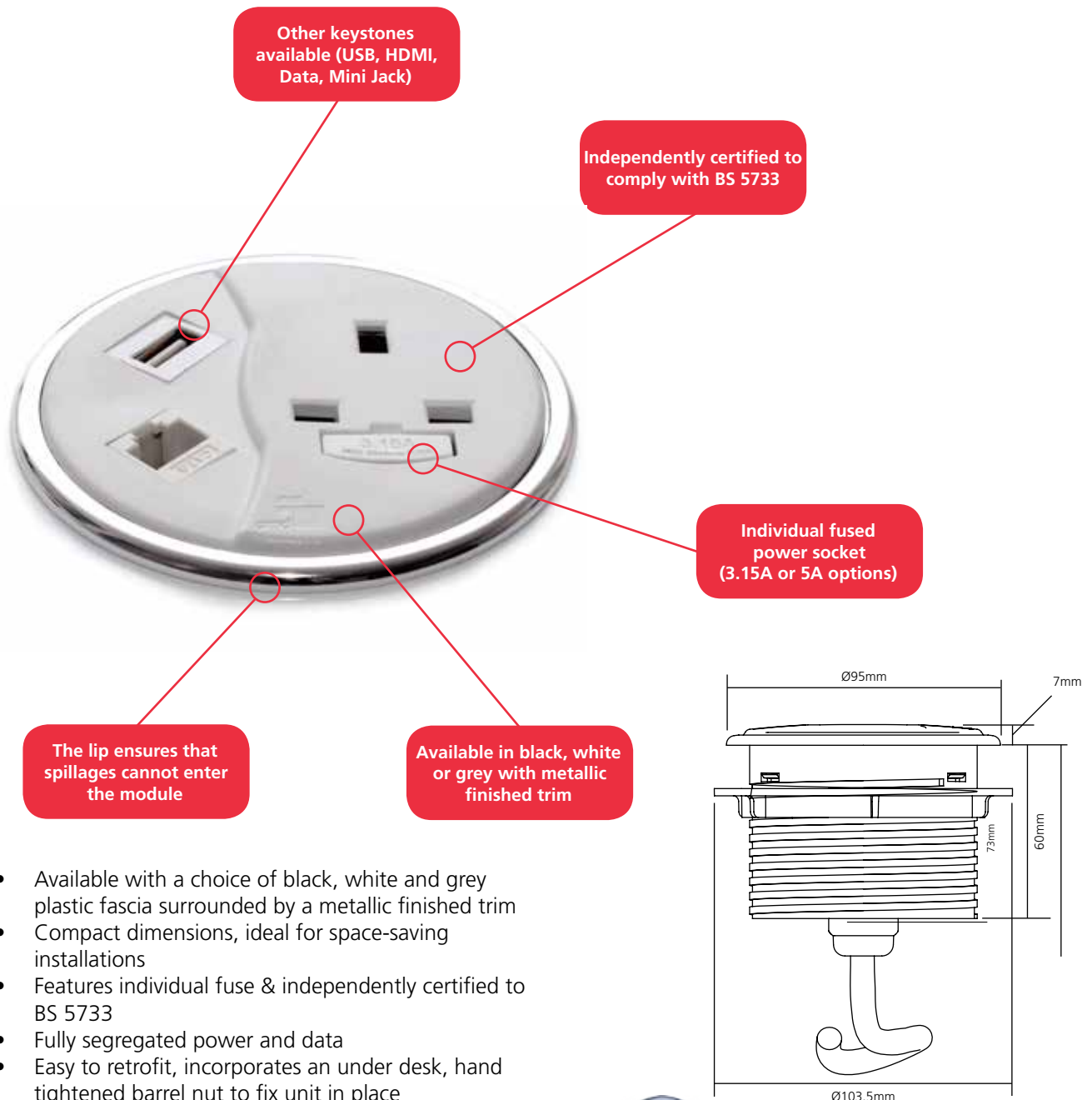


PortHole power and data

With its innovative design, PortHole is ideal for adapting an existing 80mm cable hole to allow a single power socket and a choice of keystones to be fitted to a desk with a simple screw fit mechanism.



- Available with a choice of black, white and grey plastic fascia surrounded by a metallic finished trim
- Compact dimensions, ideal for space-saving installations
- Features individual fuse & independently certified to BS 5733
- Fully segregated power and data
- Easy to retrofit, incorporates an under desk, hand tightened barrel nut to fix unit in place
- Power and data cables all exit from the base of the unit & come with a standard 1m mains lead to 3 pole connector, 3m data lead and 2m USB lead where appropriate
- Designed to fit any desk thickness between 13mm and 50mm



Build it your way

Please see page 47 for more information.

Note: CMD cannot accept any responsibility or liability for providing category 6 performance in products supplied.

Fuses: Only accessible after removal of equipment plug. Lead lengths shown will be the conductor length and not the distance from the end of the module to the plug. For example, a 3m prewired power lead will be approximately 2.875m as 125mm will be internal for the termination. This is also applicable for data leads. Data fascias may be subject to colour change.

Cables: White and grey modules are supplied with white cables and black modules are supplied with black cables.

HDMI: CMD cannot accept any responsibility or liability for providing HDMI performance in products supplied over 10m in length.

Code	Colour	Description
90P001BGST	Black	1 x Power Socket
90P001GGST	Grey	Power socket 3.15A individually fused with 1m mains cable to 3 Pole connector
90P001WGST	White	
90U001BGST	Black	1 x Power Socket, 1 x RJ45 Cat6 Socket
90U001GGST	Grey	Power socket 3.15A individually fused with 1m mains cable to 3 Pole connector and 3m data lead
90U001WGST	White	
90U002BGST	Black	1 x Power Socket, 2 x RJ45 Cat6 Sockets
90U002GGST	Grey	Power socket 3.15A individually fused with 1m mains cable to 3 Pole connector and 2 x 3m data leads
90U002WGST	White	
90U003BGST	Black	1 x Power Socket, 1 x USB Socket (Data transfer)
90U003GGST	Grey	Power socket 3.15A individually fused with 1m mains cable to 3 Pole connector and 2m USB lead
90U003WGST	White	
90U004BGST	Black	1 x Power Socket, 2 x USB Sockets (Data transfer)
90U004GGST	Grey	Power socket 3.15A individually fused with 1m mains cable to 3 Pole connector and 2 x 2m USB leads
90U004WGST	White	
90U005BGST	Black	1 x Power Socket, 1 x RJ45 Cat6 Socket, 1 x USB Socket (Data transfer)
90U005GGST	Grey	Power socket 3.15A individually fused with 1m mains cable to 3 Pole connector, 3m data lead and 2m USB lead
90U005WGST	White	

HDMI sockets, Mini Jack Keystones and 5A fuses are also available. Cat6 socket is fully backward compatible.



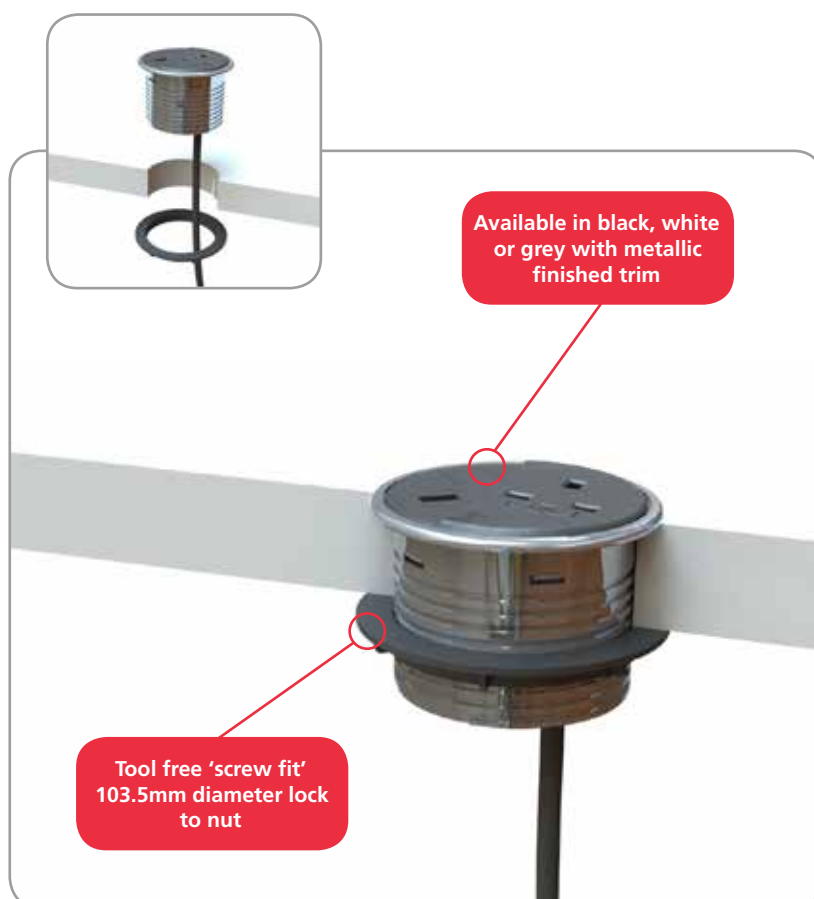
Black



White

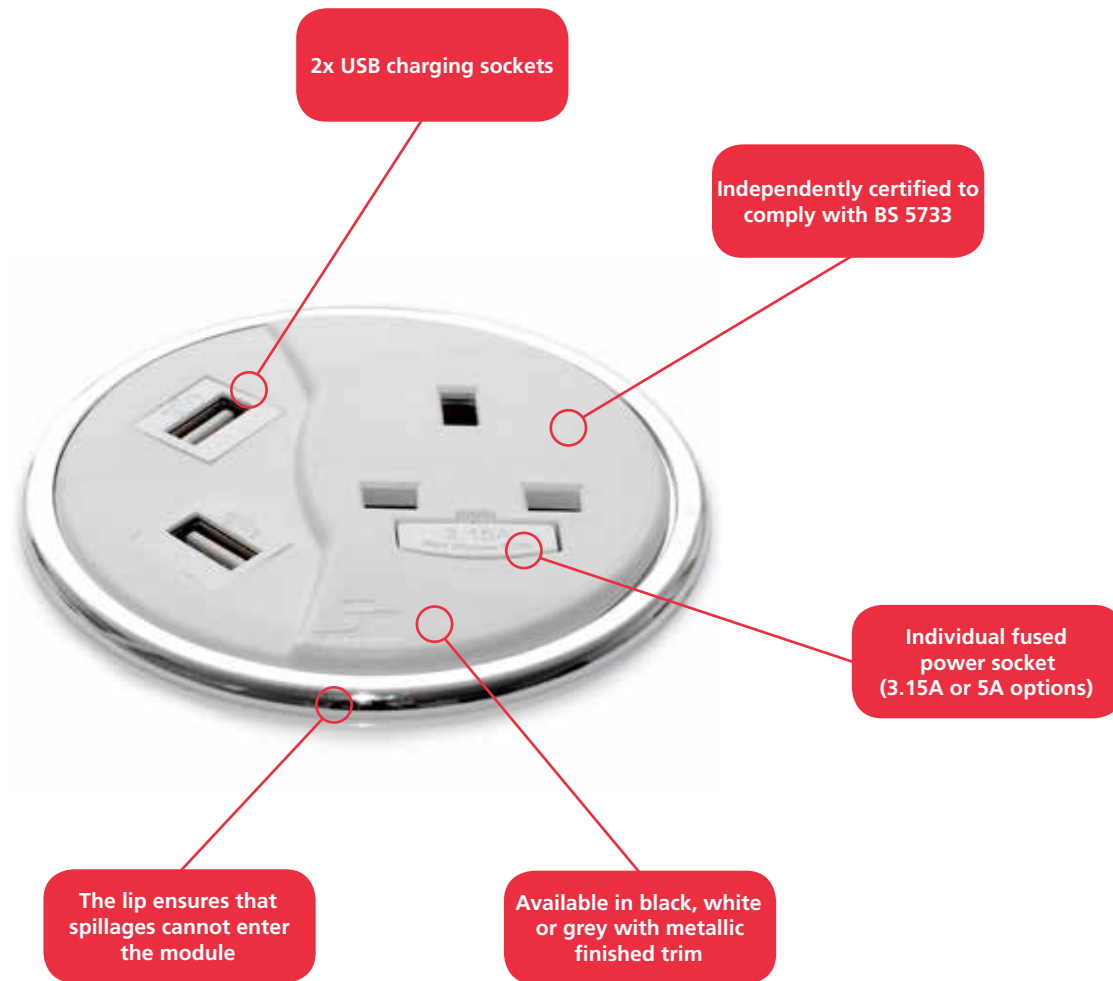


Grey



PortHole II power and USB charging

This version of PortHole has been designed to include our dual port USB charger, which is capable of charging a wide range of devices including the simultaneous charging of two Apple devices.



- Complies with the latest charging standard (BS EN 62684 Interoperability specifications of common external power supply (EPS) for use with data-enabled mobile telephones)
- Dual port USB charger capable of charging a wide range of devices including the simultaneous charging of two Apple devices
- Two independent USB charging ports, which can be used at the same time
- Powered from adjacent power socket so no additional wiring is required
- The charger is compatible with our full range of in desk and on desk modules

Code	Colour	Description
90CP01BGST	Black	1 x Power Socket
90CP01GGST	Grey	Power socket 3.15A individually fused with 2 port USB charger, 1m mains cable to 3 Pole connector
90CP01WGST	White	

Note: CMD cannot accept any responsibility or liability for providing category 6 performance in products supplied. We will however fit category 6 specification components where specified.

Fuses only accessible after removal of equipment plug. Lead lengths shown will be the conductor length and not the distance from the end of the module to the plug. For example, a 3m prewired power lead will be approximately 2.875m as 125mm will be internal for the termination. This is also applicable for data leads.

HDMI: CMD cannot accept any responsibility or liability for providing HDMI performance in products supplied over 10m in length.