

## Snug CPU Support



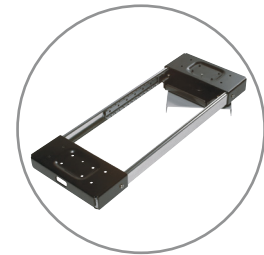
Snug is a simple and stylish CPU support that enhances the aesthetics of any workspace environment and allows easy access to the front and back of the CPU.

### Features

- Slim and stylish design
- Simple to install
- Available in various colours
- ABS fascia cover fits on to metal structure giving a smart aesthetic look
- Extender plate included as standard for wider CPUs
- CPU sits on a metal platform and is secured in place with a strap
- CPU dimensions range: 275mm - 420mm (H) x 96mm - 190mm (W)
- Load tested by FIRA
- Supports CPU weights up to 10kg - subject to desk material
- Product weight 3.44kg

Optional Slide and Rotate allows movement of the CPU holder for Snug and Ladder.

Slide mechanism requires a minimum desk depth of 700mm (Track length 407mm).



Code	Colour	Description
58A109	Black Body with Metallic Silver Frame	Snug Adjustable CPU Support
58A122	White Body with Metallic Silver Frame	Snug Adjustable CPU Support
58A162	Grey Body with Metallic Silver Frame	Snug Adjustable CPU Support
58A049	Black and Silver	Slide and Rotate Mechanism

## Rainbow CPU Trolley

### Features

- Simple CPU trolley
- Width adjustable from 100 – 190mm
- Rubber support pads hold CPU firmly in position
- Supports CPU weights up to 10kg

Code	Colour	Description
58A190	Silver	Rainbow CPU Trolley

