

Vision Monitor Arm

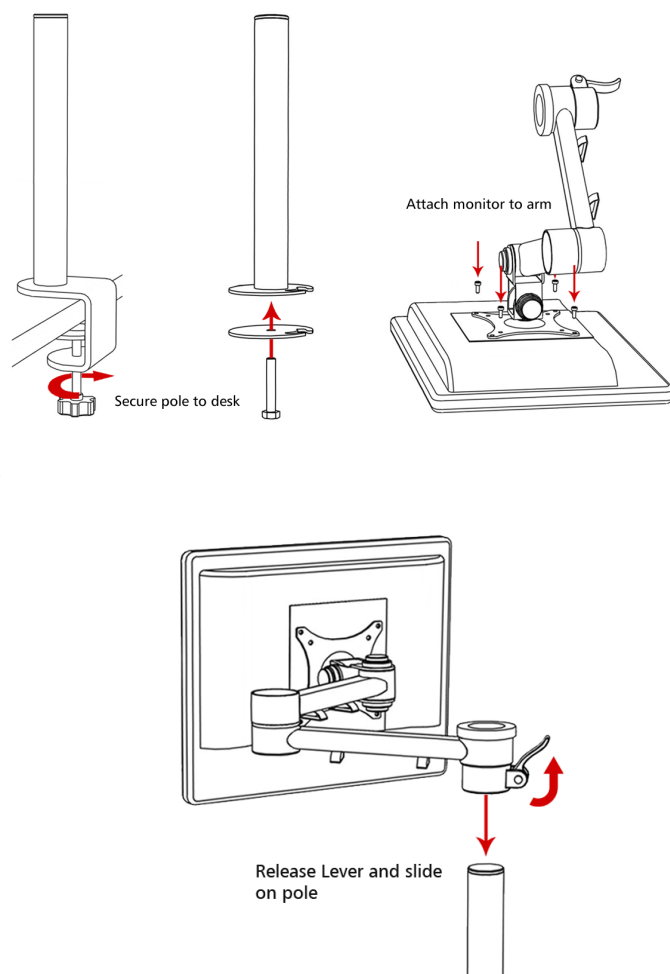
Description

Vision comes complete with a standard 'C' clamp, 80mm Grommet and Bolt Through fixings and can support monitors up to 8kgs in weight. The 38mm diameter pole allows a huge 330mm of height adjustment, while the design also allows a full 360 degrees of swivel movement with full head tilt to be positioned at the optimum eye level.

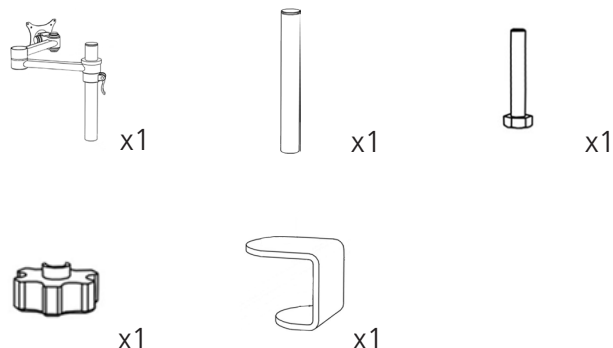
Cleaning Storage & Maintenance

Small Parts	This product does contain small parts & should be kept out of reach from young children while being assembled
Service Components	Available to order
Cleaning & Maintenance	Damp cloth, no abrasives or solvents to be used on the cosmetic surfaces. Never use strong detergents or abrasive cleaners as may damage surface finish
Handling & Storage	Do not drop or expose to moisture

Assembly Instructions



Contents



Warning

Ensure desk surface / partition / is suitable to take the weight of the arm

Do not use this product for any purpose other than the one it was designed for

Hold monitor tightly when making any adjustments

Care should be taken to avoid trapping fingers

Do not attach monitor before assembling the arm

Do not dismantle or remodel the arms

