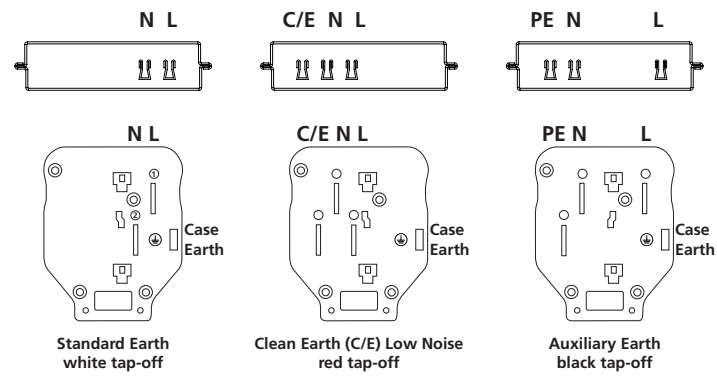
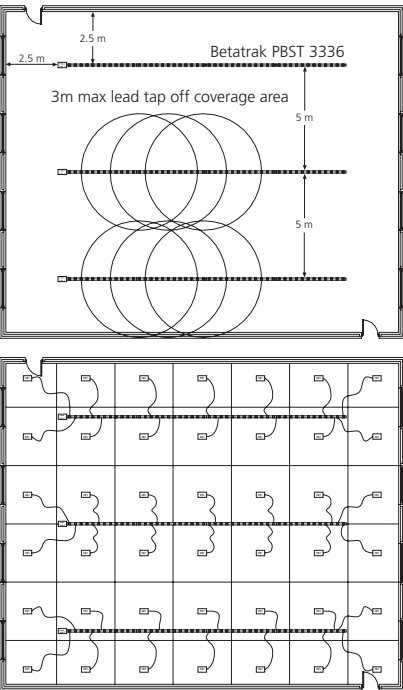


This installation guide is intended to be used specifically with the earth types shown below. Ensure the colour of the tap-offs are correct for the type to be fitted to the powertrack prior to installation.



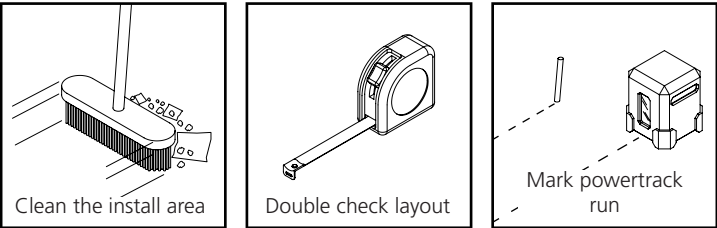
Typical floor layouts



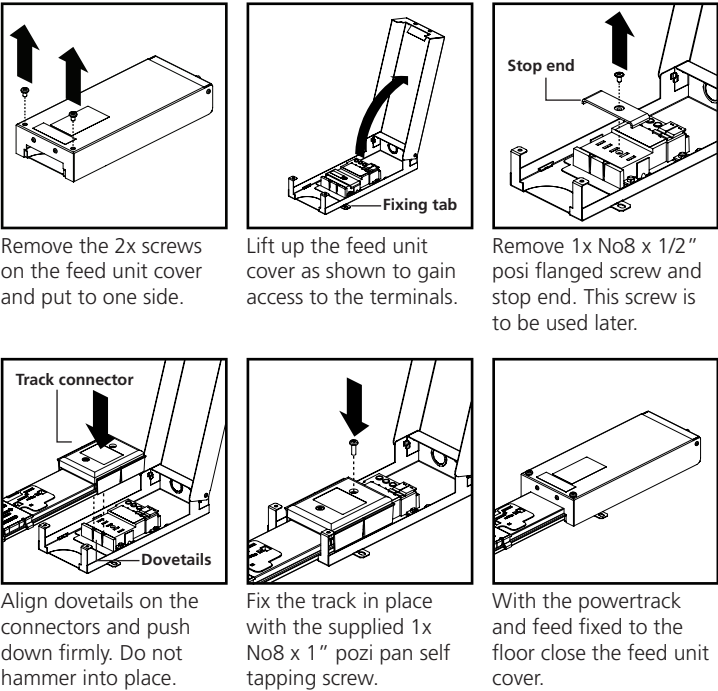
Powertrack
3m tap-offs provide full coverage when powertrack is laid out on 5m centres.

Floor Boxes
Typical layout: 1 floor box for every 10m².

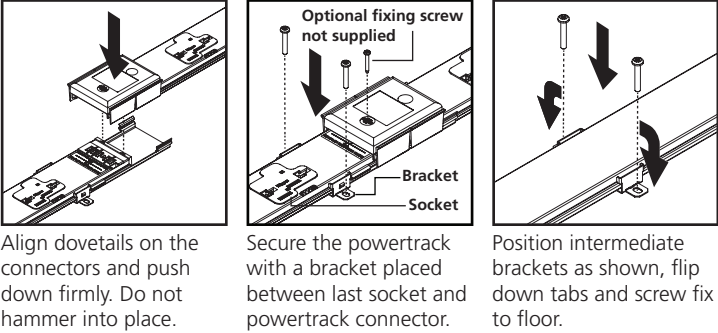
Prepare the site



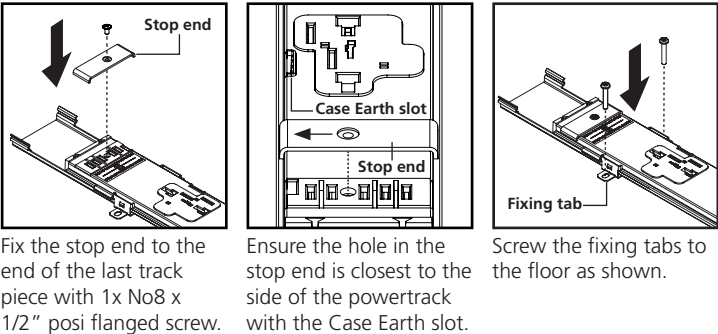
Feed unit connection (feed unit to track)



Track length connection (track to track)

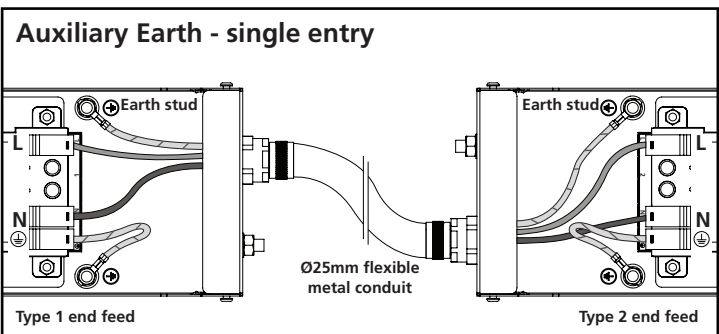
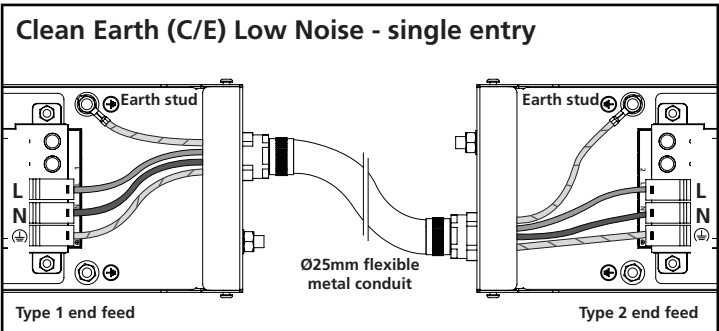
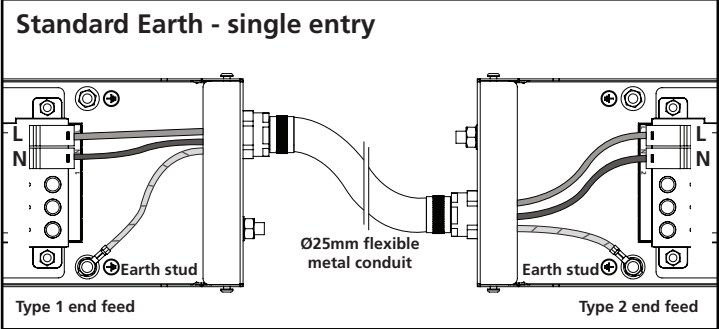


Stop end



Feed wiring instructions

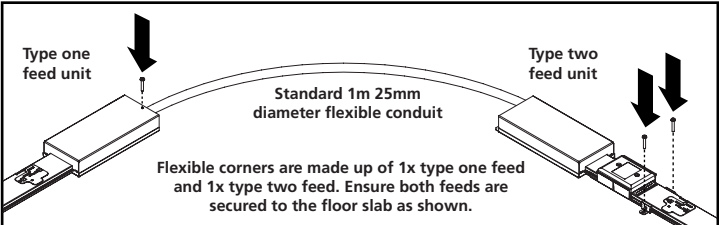
Wire colour key:  Live Brown  Neutral Blue  Earth Green/Yellow



Flexible corners (supplied separate to feed and powertrack)

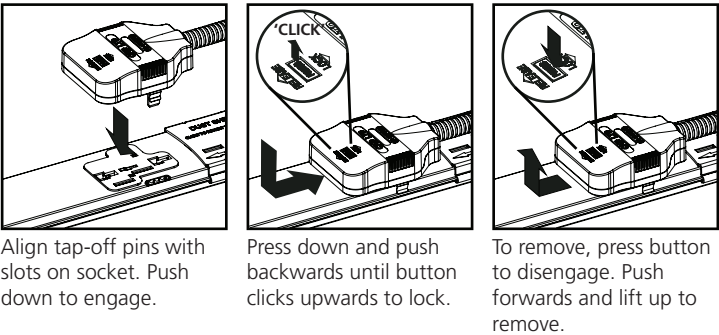
- Flexible corner kits consisting of a Type 1 and a Type 2 feed end must utilise a suitably rated cable to meet the rating of the protective device at the origin of the circuit.
- The installation method of the cable and type utilised between the Type 1 and Type 2 feed ends must be selected to suit the external influences of the installation.
- You must follow the correct wiring arrangement appropriate to the Betatrak type to achieve phase and earth connection requirements.

Flexible corners - single feed



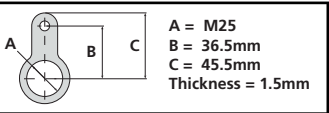
Tap-off engagement/release

****WARNING****
An unterminated tap-off **MUST NEVER** be connected to a live track. Provided that it is off load, a terminated tap-off may be removed/inserted into a live track. Conduit must be bonded to Earth.



Earthing ring/tag (not supplied by CMD)

The feed end has the ability to accept a standard M25 SWA Earthing ring/tag with fixing points at 36.5mm.



Additional information

Safety

- Installation is to be carried out in accordance with relevant Health & Safety regulations and only to be carried out by a skilled or competent person.
- The product should be installed to comply with the relevant national standards and be inspected and tested prior to being put into service (in the UK BS 7671 Wiring Regulations).
- Isolate the supply before installation or repositioning. Any locking mechanisms must be used and fully engaged.
- Incorrect use could lead to risk of electrocution.
- Product to be used only for the intended purpose of distributing power in a commercial environment.
- Do not misuse, dismantle or re-configure the product because doing so will invalidate the warranty.

Standards

- Refer to the Declaration of Conformity.

Further guidance

- Fuse replacement only to be carried out by a skilled or competent person.
- Should the supply cable need replacing, contact CMD.

Product care

- Clean using a dry cloth. No abrasives or solvents to be used on the product.
- Do not drop or expose to moisture.

