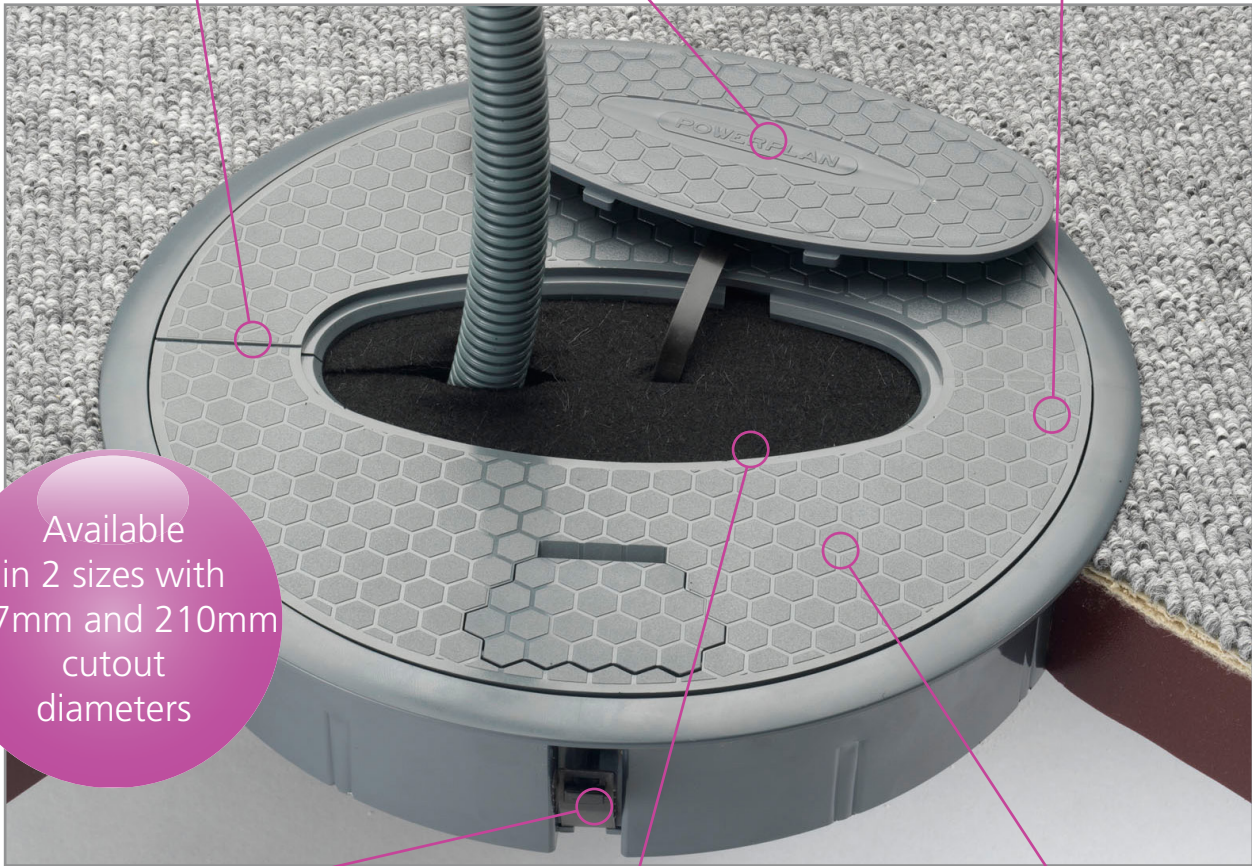


Cable hives are an alternative to floor boxes and slab boxes for taking underfloor power to under desk level. They offer an ideal solution for a fast, simple and unobtrusive installation. Easy to install and relocate if necessary, cable hives are ideal for use with our Conti power module, perfect for any office power requirements.

Split lid option - Integral foam insert for secure cable grip

Accessible lid with retention cable

Hive colour - Polycarbonate ABS  
Grey - RAL 7031, (other colours available, minimum quantity requirements)



Available in 2 sizes with 127mm and 210mm cutout diameters

Simple access:  
'Push fit' for fast installation  
Unique self latching mechanism

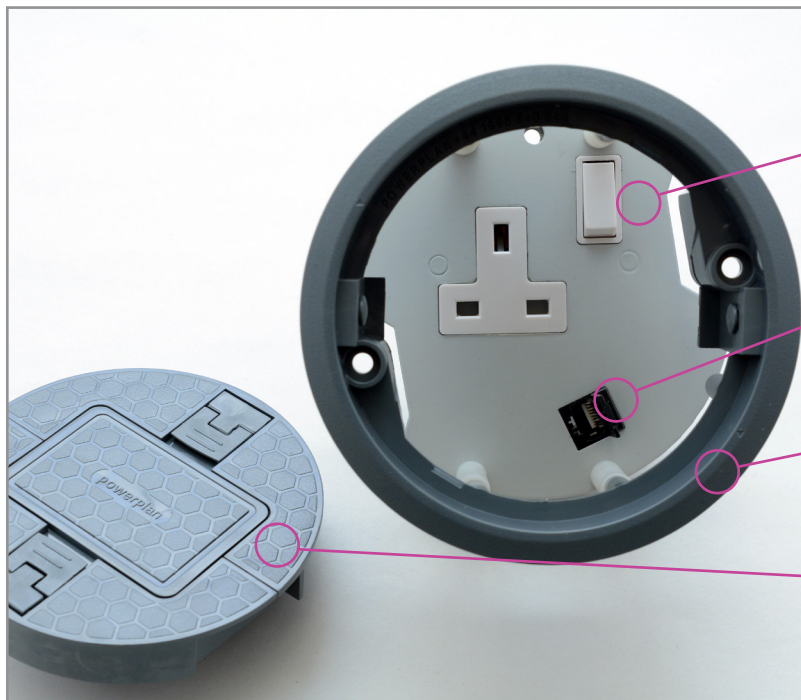
Lid Variations: Accepts up to 2 x 40mm flexible conduits  
Soft and hard foam available

Interlocking clamp top

- Installed in less than 5 seconds – removed in less than 10 seconds (No tools required for fitting)
- Available in 127mm and 210mm (Outside diameter: 140mm and 230mm respectively)
- Quality, reliability and safety come as standard
- Self closing lifting handles
- Manufactured from polycarbonate – ABS in standard grey (RAL 7031)
- Fasteners will work on panel thickness of 5mm and upwards
- Panel cut out diameter: 127mm and 210mm

**Maximum number of conduits accepted when lid is in place:**

Standard Cable Hive (127mm)		Large Cable Hive (210mm)	
PPH261G (Hard Foam)	PPHC261G (Soft Foam)	PPG211G (Hard Foam)	PPGC211G (Soft Foam)
4 x 16mm	8 x 16mm	10 x 16mm	16 x 16mm
3 x 20mm	3 x 20mm	6 x 20mm	9 x 20mm
2 x 25mm	3 x 25mm	3 x 25mm	5 x 25mm
1 x 32mm	2 x 32mm	3 x 32mm	3 x 32mm

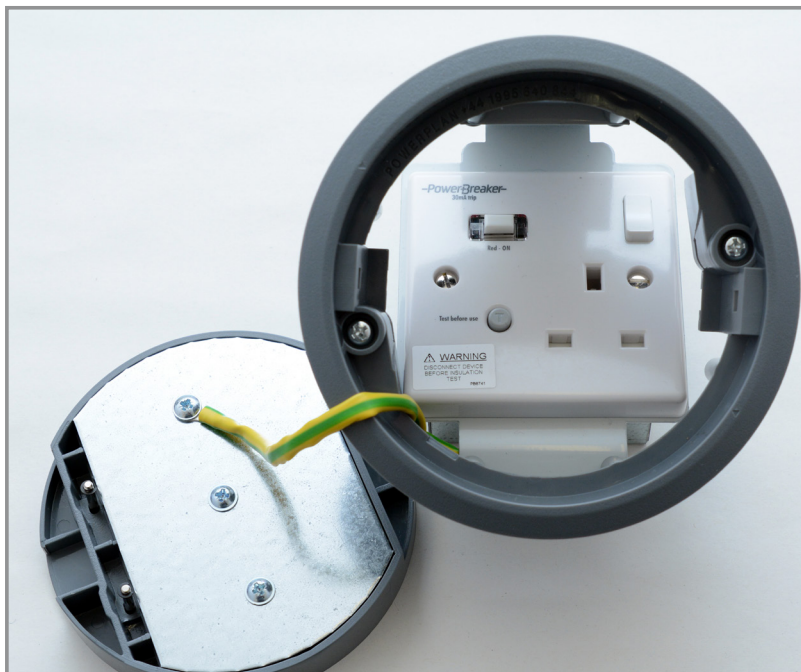


Single 13A switched socket

Switched socket available with data keystone

Hive colour - Grey, RAL7031 (other colours available)

Hive live with removable centre section for cable exit



### Angled standard RCD cleaners hive

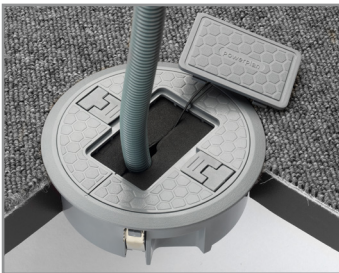
Our angled standard RCD Cleaners Hive has been designed to allow the fitment of moulded 13A plug tops with strain relief without stressing the flex hence its new angled design. Designed to power 230V vacuum cleaners.

#### Features:

- More robust
- 35mm reduction in overall depth
- Improved user functionality




## Standard Cable Hive





Code	Height	Description
PPHC261G	40mm	Standard Cable Hive

## Standard Power/Data Hive

Code	Height	Description
PPHC265G	93mm	Standard Power Cable Hive
PDH265G/245	93mm	Standard 2 Way Data Hive

## Cable Tidy Fixing

Code	Height	Description
PPH260G	93mm	Cable Tidy fixing for use with Standard Cable Hive

## Standard Access Hive




Code	Height	Description
PPH264G	40mm	Standard Access Cable Hive

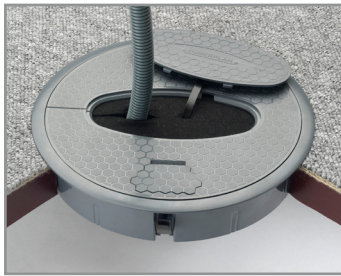
## Standard Cleaners Hive

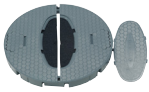





Code	Height	Description
PPH263G	76mm	Standard Cleaners Hive
PPH263G/SW	105mm	Cleaners Hive (Switched Plastic Moulded Socket)
PPH263G/5M	120mm	Cleaners Hive (Angled 5A Unswitched moulded socket)
PPH263NG	76mm	Cleaners Hive (Non Standard Unswitched Socket)
PPH263G/RCD/A	120mm	Angled Standard RCD Cleaners Hive

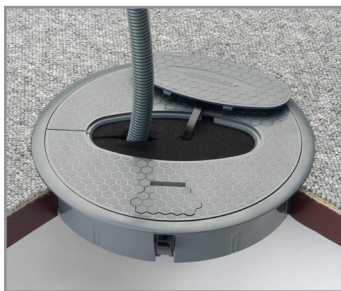
Please note that the cut out size for our standard cable hives is 127mm diameter.

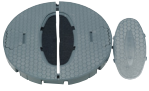



## Large Cable Hive



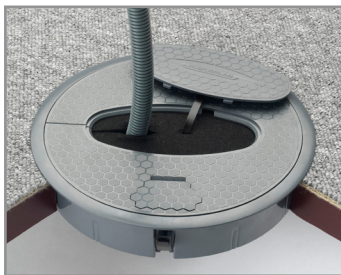
		
Lid	Body	Cable Hive Complete
Code	Height	Description
PPGC211G	40mm	Large Cable Hive

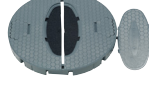



## Large Power Hive



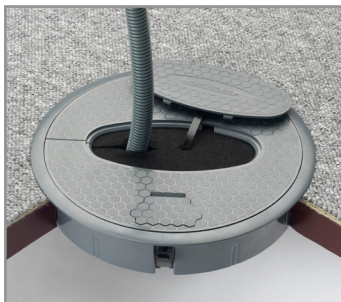
			
Lid	Body	2 x 13A Switched Sockets	Power Hive Complete
Code	Height	Description	
PPGC212G	107mm	Large Power Cable Hive 2x Socket	
PPGC212G/RCD	107mm	RCD Large Power Cable Hive 2x Sockets	

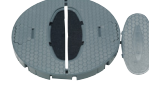


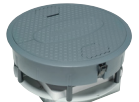
## Large Data Hive



			
Lid	Body	4 x RJ45 cut-outs	Data Hive Complete
Code	Height	Description	
PPGC214G	107mm	Large Data Hive c/w data box 4 x RJ45	

## Large Power and Data Hive



			
Lid	Body	2 x 13A switched, 4 x RJ45 cut-outs	Power/Data Hive Complete
Code	Height	Description	
PPGC215G	107mm	Large Power/Data Hive 2x Socket and 4x RJ45	
PPGC215G/RCD	107mm	Large Power/Data Hive 2x Socket (RCD) and 4x RJ45	

Please note that the cut out size for our large cable hives is 210mm diameter.