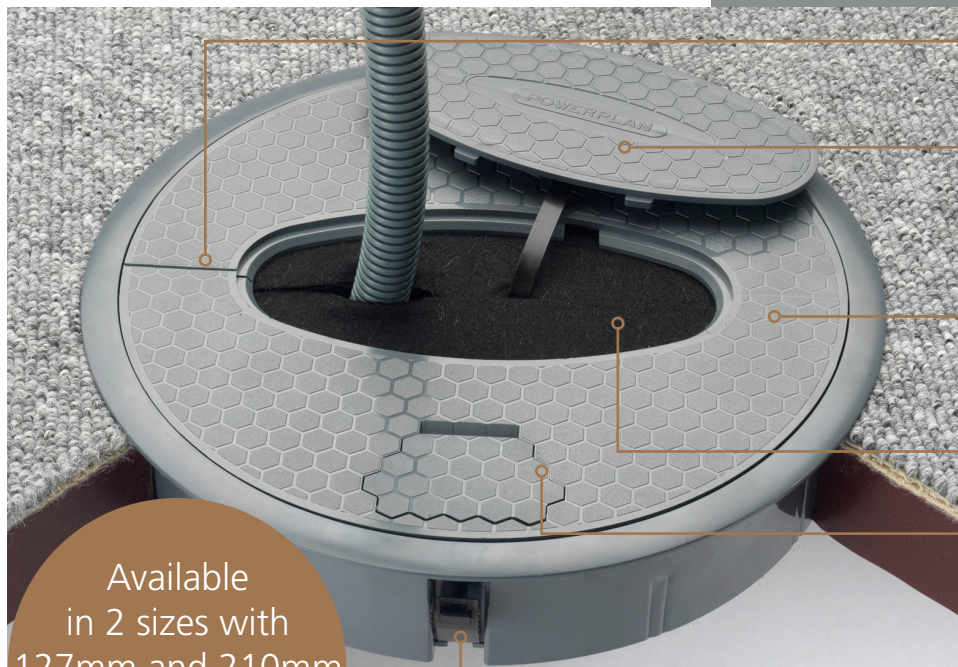


Cable Hives®

Cable hives are an alternative to floor boxes and slab boxes for taking underfloor power to under desk level. They offer an ideal solution for a fast, simple and unobtrusive installation. Easy to install and relocate if necessary, cable hives are ideal for use with our Conti power module, perfect for any office power requirements.

Cable Hives®



Available
in 2 sizes with
127mm and 210mm
cutout
diameters

Split lid option - Integral foam insert for secure cable grip

Accessible lid with retention cable

Hive colour - Polycarbonate ABS Grey - RAL 7031, (other colours available, minimum quantity requirements)

Lid Variations: Accepts up to 2 x 40mm flexible conduits

Interlocking clamp top

Simple access:
'Push fit' for fast installation
Unique self latching mechanism

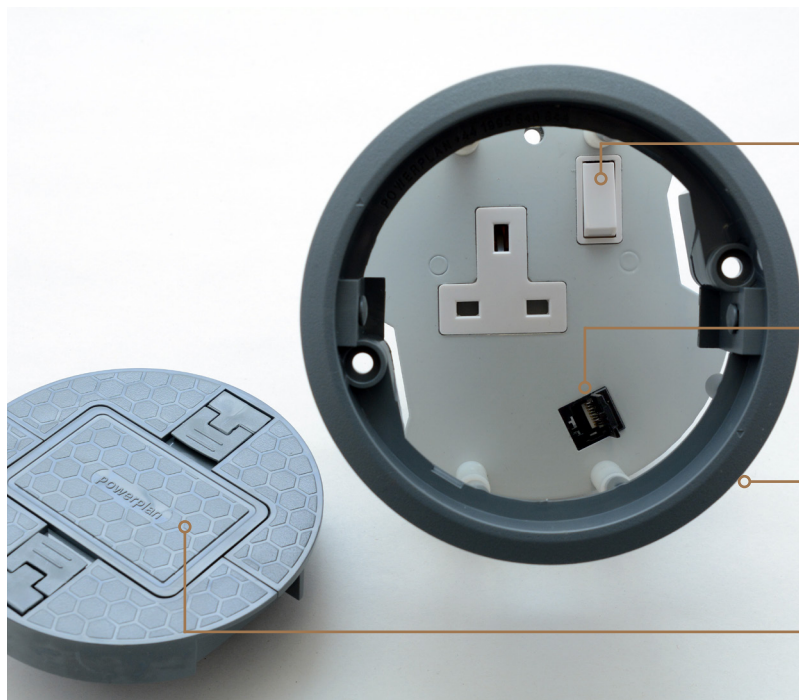
- Installed in less than 5 seconds – removed in less than 10 seconds (No tools required for fitting)
- Available in 127mm and 210mm (Outside diameter: 140mm and 230mm respectively)
- Quality, reliability and safety come as standard
- Self closing lifting handles

- Manufactured from polycarbonate – ABS in standard grey (RAL 7031)
- Fasteners will work on panel thickness of 5mm and upwards
- Panel cut out diameter: 127mm and 210mm

Maximum number of conduits accepted when lid is in place:

Standard Cable Hive (127mm)
PPHC261G (Soft Foam)
8 x 16mm
3 x 20mm
3 x 25mm
2 x 32mm

Large Cable Hive (210mm)
PPGC211G (Soft Foam)
16 x 16mm
9 x 20mm
5 x 25mm
3 x 32mm

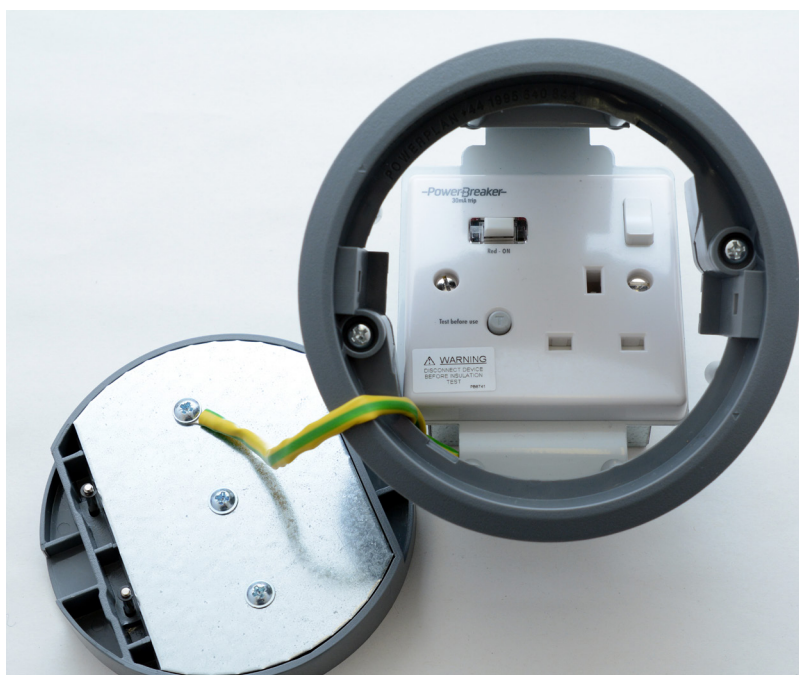


Single 13A switched socket

Switched socket available with data keystone

Hive colour - Grey, RAL7031 (other colours available)

Hive live with removable centre section for cable exit



Angled standard RCD cleaners hive

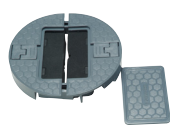
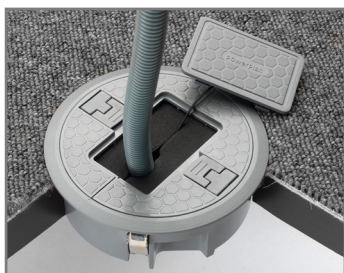
Our angled standard RCD Cleaners Hive has been designed to allow the fitment of moulded 13A plug tops with strain relief without stressing the flex hence its new angled design. Designed to power 230V vacuum cleaners.

Features:

- More robust
- 35mm reduction in overall depth
- Improved user functionality



Standard Cable Hive



Lid



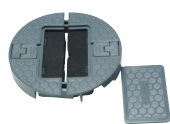
Body



Cable Hive Complete

Code	Height	Description
PPHC261G	40mm	Standard Cable Hive

Standard Power/Data Hive



Lid



Body



13A Socket



2 x RJ45 Cut-Outs



Hive Complete

Code	Height	Description
PPHC265G	93mm	Standard Power Cable Hive
PDH265G/245	93mm	Standard 2 Way Data Hive

Cable Tidy Fixing



Fixing bracket



Fitted to Hive lid



Complete with Cable Tidy

Code	Height	Description
PPH260G	93mm	Cable Tidy fixing for use with Standard Cable Hive

Standard Access Hive



Lid



Body



Access Hive Complete

Code	Height	Description
PPH264G	40mm	Standard Access Cable Hive

Standard Cleaners Hive



Lid



Body



13A Socket



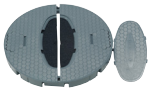


Cleaners Hive Complete

Code	Height	Description
PPH263G	76mm	Standard Cleaners Hive
PPH263G/SW/87	87mm	Cleaners Hive (Switched Plastic Moulded Socket)
PPH263G/5M	120mm	Cleaners Hive (Angled 5A Unswitched moulded socket)
PPH263NG	76mm	Cleaners Hive (Non Standard Unswitched Socket)
PPH263G/RCD/A	120mm	Angled Standard RCD Cleaners Hive

Please note that the cut out size for our standard cable hives is 127mm diameter.

Large Cable Hive

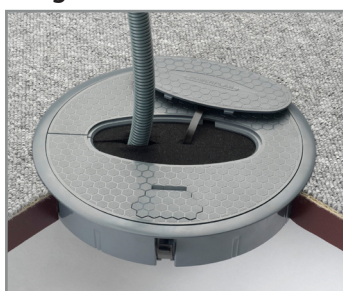


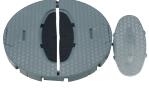


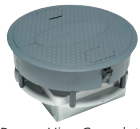




Lid
Body
Cable Hive Complete

Code	Height	Description
PPGC211G	40mm	Large Cable Hive

Large Power Hive





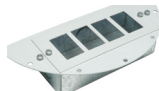






Lid
Body
2 x 13A Switched Sockets
Power Hive Complete

Code	Height	Description
PPGC212G	107mm	Large Power Cable Hive 2x Socket
PPGC212G/RCD	107mm	RCD Large Power Cable Hive 2x Sockets

Large Data Hive



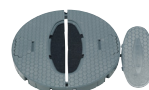


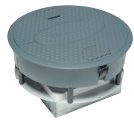





Lid
Body
4 x RJ45 cut-outs
Data Hive Complete

Code	Height	Description
PPGC214G	107mm	Large Data Hive c/w data box 4 x RJ45

Large Power and Data Hive



Lid
Body
2 x 13A switched,
4 x RJ45 cut-outs
Power/Data Hive Complete

Code	Height	Description
PPGC215G	107mm	Large Power/Data Hive 2x Socket and 4x RJ45
PPGC215G/RCD	107mm	Large Power/Data Hive 2x Socket (RCD) and 4x RJ45

Please note that the cut out size for our large cable hives is 210mm diameter.