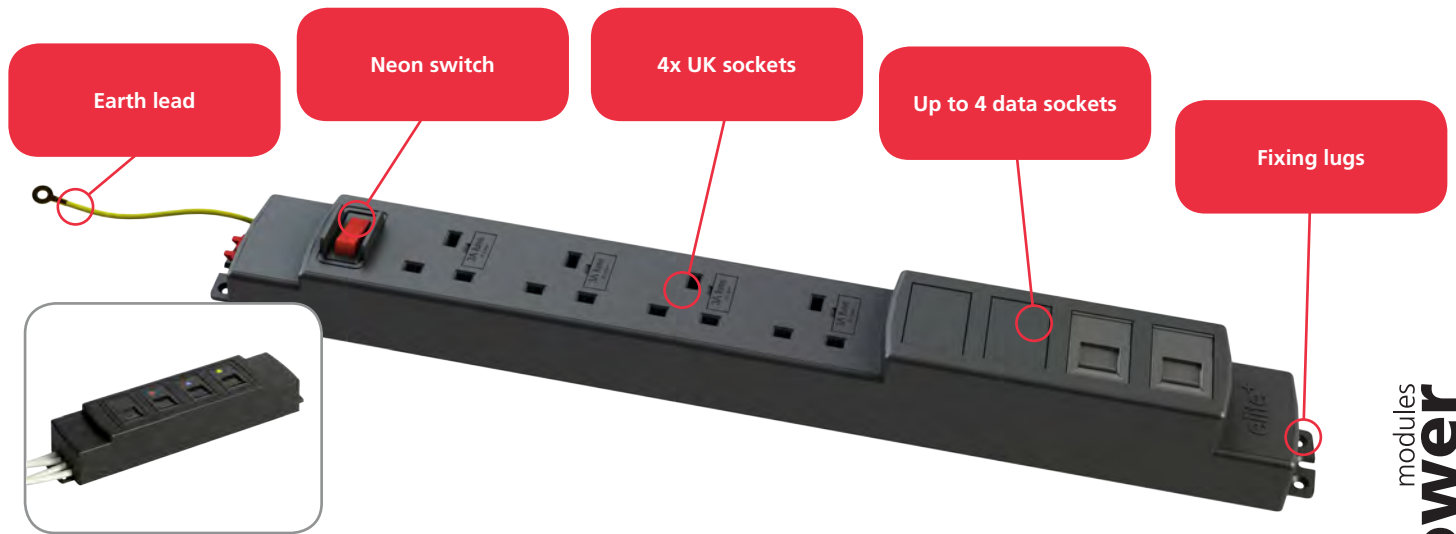
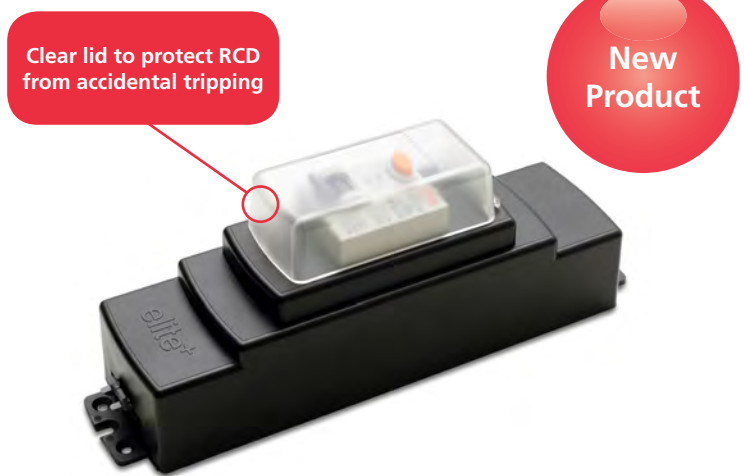


These combined power and data modules have been designed to enable customers to configure their own data needs without the associated risks of exposure to an opened power module.



Code	Description
92KD01GST	2x Power sockets one neon switch and 2x Data Compartment (Empty)
92KD02GST	2x Power sockets one neon switch and 2x RJ45 Cat6 data sockets with 3m data leads
92KD03GST	2x Power sockets one neon switch and 2x RJ45 Cat6 data sockets with 5m data leads
92KD04GST	2x Power sockets one neon switch and 2x RJ45 Cat6 data sockets with 7m data leads
92KD05GST	4x Power sockets one neon switch and 4x Data Compartment (Empty)
92KD06GST	4x Power sockets one neon switch and 2x RJ45 Cat6 data sockets with 3m data leads 2x Data Compartment
92KD07GST	4x Power sockets one neon switch and 2x RJ45 Cat6 data sockets with 5m data leads 2x Data Compartment
92KD08GST	4x Power sockets one neon switch and 2x RJ45 Cat6 data sockets with 7m data leads 2x Data Compartment
92K014	Separate Data Module x 4 compartment (Empty)
92K018	2x RJ45 CAT6 data sockets with 3m data leads
92K020	4x RJ45 CAT6 data sockets with 3m data leads

Our New Elite RCD unit has 3 pole connections to allow it to be inserted into an existing desk power installation to provide RCD protection in compliance with the latest BS6396 installation standard for Electrical Installations in Office Furniture.



Code	Description
------	-------------

92KR001GST 16A RCD Protection Module

### Starter Cable 13A UK Plug to Female 3 Pole Connector

Code Black	Code White	Length
601120GST	601220GST	2m
601130GST	601230GST	3m
601150GST	601250GST	5m

Note: Certain configurations can accommodate Cat6a Data sockets (contact us for further information). CAT6 is backwards compatible. CMD cannot accept any responsibility or liability for providing CAT6 performance in products supplied. We will however fit CAT6 specification components where specified.