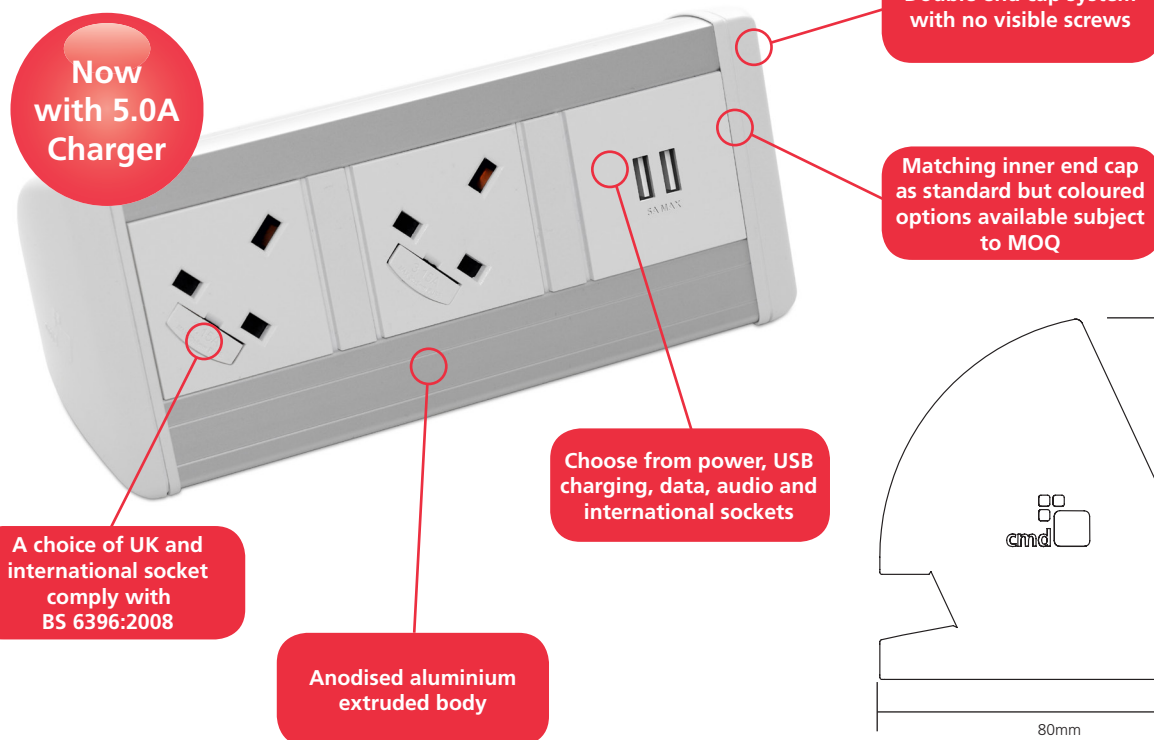


Harmony features integral fuses which are fully compliant to current safety regulations and is configured with segregated power and data choices to suit different workstation requirements. Harmony can be used in conjunction with our under desk modules to provide greater power solutions and is fitted to the edge of desk with C clamps or adhesive kit making it functional yet non-intrusive to the working desk.

Harmony Power Module



Features

- Extruded silver metal body for longer lengths
- Unit complies with BS 5733
- All standard options are supplied with a 1m mains lead to 3 pole connector
- Requires a separate mains lead if connected directly to a wall or floor socket
- Fixing via Harmony C clamp or adhesive fixing kit
- All UK sockets feature integral fuses. Choice of 3.15A or 5A fuses are available to comply with BS 6396
- Segregation between power and data to comply with BS 6396



Build it your way

Please see page 31 for more information.



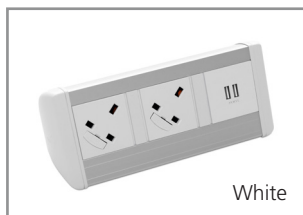
Manage your energy

Configure to allow energy to be monitored and controlled with Footprint. See page 73 for more details.

Cables: White and grey modules are supplied with white cables and black modules are supplied with black cables.

Data Cables: CMD cannot accept any responsibility or liability for providing category 6 performance in products supplied. CMD cannot accept any responsibility or liability for providing HDMI performance in products supplied over 5m in length.

Fuses: Only accessible after removal of equipment plug. Lead lengths shown will be the conductor length and not the distance from the end of the module to the plug. For example, a 3m prewired power lead will be approximately 2.875m as 125mm will be internal for the termination. This is also applicable for data leads. Data fascias may be subject to colour change.



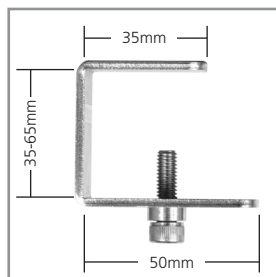
UK Code	Schuko Code	Colour	Description
8400001	8400036	Black/Silver	1 x power, 1 x Twin port 2Amp USB Charger,
8400002	n/a	Grey/Silver	1m mains lead to 3 pole connector
8400003	8400037	White/Silver	
84050001	Please call	Black/Silver	1 x power, 1 x Twin port 5Amp USB Charger,
84050002	n/a	Grey/Silver	1m mains lead to 3 pole connector
84050003	Please call	White/Silver	
8400005	8400040	Black/Silver	2 x power, 1m mains lead to 3 pole connector
8400006	n/a	Grey/Silver	
8400007	8400041	White/Silver	
8400009	8400042	Black/Silver	2 x power, 1 x Twin port 2Amp USB Charger,
8400010	n/a	Grey/Silver	1m mains lead to 3 pole connector
8400011	8400043	White/Silver	

UK Code	Schuko Code	Colour	Description
84050004	Please call	Black/Silver	2 x power, 1 x Twin port 5Amp USB Charger,
84050005	n/a	Grey/Silver	1m mains lead to 3 pole connector
84050006	Please call	White/Silver	
8400013	8400046	Black/Silver	2 x power, 2 x RJ45 data Cat6,
8400014	n/a	Grey/Silver	1m mains lead to 3 pole connector
8400015	8400047	White/Silver	
8400017	n/a	Black/Silver	4 x power, 1m mains lead to 3 pole connector
8400018	n/a	Grey/Silver	
8400019	n/a	White/Silver	

Contour C clamp

We recommend using 2x C clamps for any module with more than 2 sockets. Available in a range of colours and sizes.

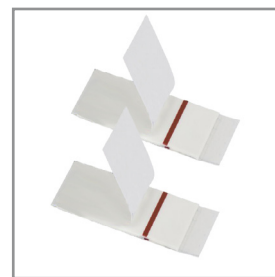
Code	Description
440005	32mm maximum recommended desk thickness



Adhesive Fixing Kit

We recommend 1x adhesive fixing kit for each module. Each kit includes 2x adhesive fixings.

Code	Description
440006	2x adhesive fixings



Data Cables

Note: Separate data cables must be purchased with our new rear access data sockets. Other cable lengths are available on request.

Code	Description
161713	3m Cat 6 data cable. Male to male connector
161239	2m USB data cable. Male to male connector
161718	2m HDMI data cable. Male to male connector