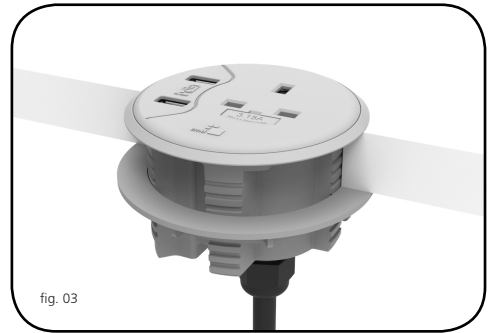
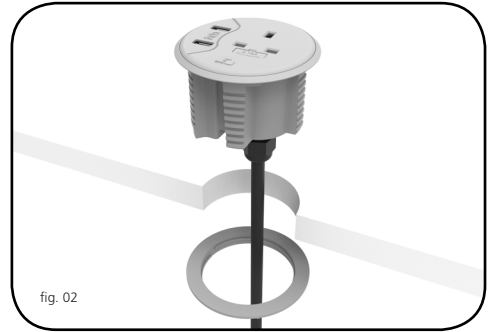




PortHole IV AC - Information and Instruction Guide

Fixing Instructions

1. The module has been designed to fit any precut 80mm grommet hole.
2. The PortHole IV module is supplied with a hand tight fixing nut which must be removed before fitting (fig. 02).
3. The cable and module must be passed through the 80mm hole so that the hand tight fixing nut can be re-attached and tightened on the underside of the desk.
4. The module can then be connected to the power supply by a suitably qualified person.
5. PortHole IV has been designed to fit desk thicknesses between 12mm and 42mm.



Cleaning, Storage & Maintenance

Service Components	Available to order.
Cleaning & Maintenance	Dry cloth, no abrasives or solvents to be used on the module surface.
Handling & Storage	Do not drop or expose to moisture.

Warning

- Do not use this product for any purpose other than which it was designed for.
- Do not over tighten the fixing nut.
- All electrical cables should be fitted by a qualified electrician.
- Do not attach power before fitting.
- Do not dismantle or remodel the power module.