

Under Desk Power

Elite+ and Eliteⁱ Power Module



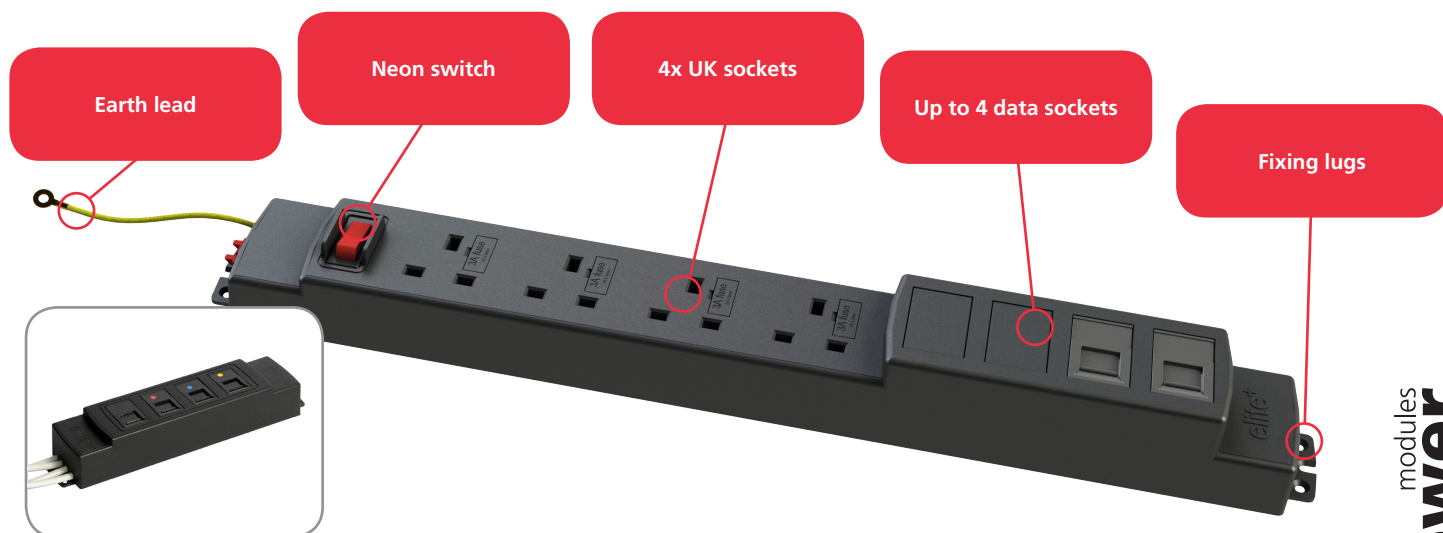
Elite+ is a moulded plastic power module, great when affordability is top priority.

- Requires a separate GST lead
- Product independently tested to BS5733

UK Code	Schuko Code	Description
92K005GST	n/a	2x power sockets individually fused 3.15A with male 3 Pole Connector input and female 3 Pole Connector output. EW
92K011GST	n/a	2x power sockets individually fused 5A with male 3 Pole Connector input and female 3 Pole Connector output. EW
92K006GST	n/a	2x power sockets with neon switches individually fused 3.15A with male 3 Pole Connector input and female 3 Pole Connector output. EW
92K012GST	n/a	2x power sockets with neon switches individually fused 5A with male 3 Pole Connector input and female 3 Pole Connector output. EW
92K007GST	92KS001GST	3x power sockets individually fused 3.15A with male 3 Pole Connector input and female 3 Pole Connector output. ENW. *Schuko sockets shuttered and un-fused
92K013GST	n/a	3x power sockets individually fused 5A with male 3 Pole Connector input and female 3 Pole Connector output. ENW
92K002GST	92KS002GST	4x power sockets individually fused 3.15A with male 3 Pole Connector input and female 3 Pole Connector output. ENNW *Schuko sockets shuttered and un-fused
92K008GST	n/a	4x power sockets individually fused 5A with male 3 Pole Connector input and female 3 Pole Connector output. ENNW
92K004GST	n/a	4x power sockets individually fused 3.15A with male 3 Pole Connector input and female 3 Pole Connector output. NNNN
92K010GST	n/a	4x power sockets individually fused 5A with male 3 Pole Connector input and female 3 Pole Connector output. NNNN
92K003GST	n/a	4x power sockets one neon switch, individually fused 3.15A with male 3 Pole Connector input and female 3 Pole Connector output. NNNN
92K009GST	n/a	4x power sockets one neon switch, individually fused 5A with male 3 Pole Connector input and female 3 Pole Connector output. NNNN
92K001GST	n/a	6x power sockets one neon switch, individually fused 3.15A with male 3 Pole Connector input. *No output. NNNNNW

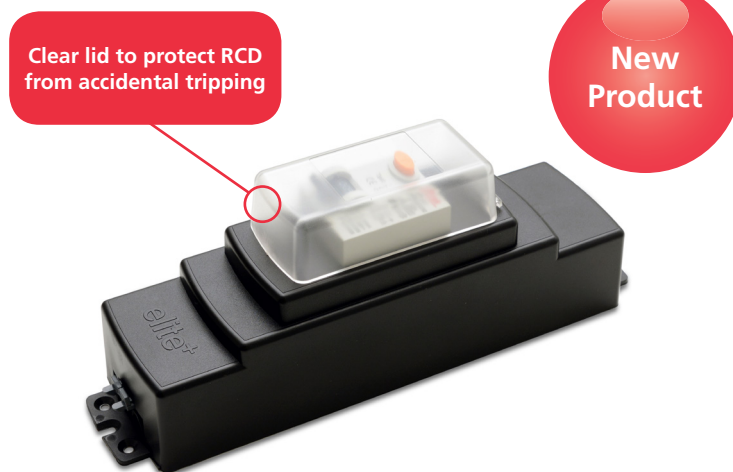
Note: Fuses only accessible after removal of equipment plug. *Complies with BS6396. All products have 300mm earth lead to M5 ring. Socket Orientation: N – is North, E – is East and W – is West.

These combined power and data modules have been designed to enable customers to configure their own data needs without the associated risks of exposure to an opened power module.



Code	Description
92KD01GST	2x Power sockets one neon switch and 2x Data Compartment (Empty)
92KD02GST	2x Power sockets one neon switch and 2x RJ45 Cat6 data sockets with 3m data leads
92KD03GST	2x Power sockets one neon switch and 2x RJ45 Cat6 data sockets with 5m data leads
92KD04GST	2x Power sockets one neon switch and 2x RJ45 Cat6 data sockets with 7m data leads
92KD05GST	4x Power sockets one neon switch and 4x Data Compartment (Empty)
92KD06GST	4x Power sockets one neon switch and 2x RJ45 Cat6 data sockets with 3m data leads 2x Data Compartment
92KD07GST	4x Power sockets one neon switch and 2x RJ45 Cat6 data sockets with 5m data leads 2x Data Compartment
92KD08GST	4x Power sockets one neon switch and 2x RJ45 Cat6 data sockets with 7m data leads 2x Data Compartment
92K014	Separate Data Module x 4 compartment (Empty)
92K018	2x RJ45 CAT6 data sockets with 3m data leads
92K020	4x RJ45 CAT6 data sockets with 3m data leads

Our New Elite RCD unit has 3 pole connections to allow it to be inserted into an existing desk power installation to provide RCD protection in compliance with the latest BS6396 installation standard for Electrical Installations in Office Furniture.



Code	Description
92KR001GST	16A RCD Protection Module

Starter Cable 13A UK Plug to Female 3 Pole Connector

Code Black	Code White	Length
601120GST	601220GST	2m
601130GST	601230GST	3m
601150GST	601250GST	5m

Note: Certain configurations can accommodate Cat6a Data sockets (contact us for further information). CAT6 is backwards compatible. CMD cannot accept any responsibility or liability for providing CAT6 performance in products supplied. We will however fit CAT6 specification components where specified.