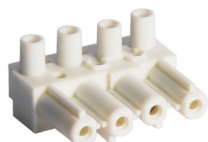


# Pre-fabricated 4 pole accessories

## Features

- Complete pluggable systems for 16A power and lighting applications
- 4 or 6 Pole leads, T Pieces and Splitters available as standard
- Non-interchangeability between lighting and power wiring systems
- 1.5mm<sup>2</sup> LSOH as standard in 3, 4, 5 or 6 cores
- Wieland GST 18i 4 and 6 Pole connectors used as standard
- Starter Leads, Drop Leads and Extender Leads available
- 4 and 6 Pole Fixed and Flying Luminaire T Pieces available
- 4 and 6 Pole 3 Way Circuit Splitters available
- 6 Pole leads, T Pieces and Splitters are suitable for DSI and DALI controllers
- Power Switched and Unswitched Fused Spurs for FCUs etc
- 100% factory tested

4 pole female plugs - plug



Code

144010GST

4 pole female plugs - cover



Code

144013

4 pole male plugs - plug



Code

144007GST

4 pole male plugs - cover



Code

144013

1 metre 4 pole male to female  
4 core 1.5mm<sup>2</sup> LSOH lead



Code

P690405001.0

3 metre 4 pole male to female  
4 core 1.5mm<sup>2</sup> LSOH lead



Code

P690405003.0

5 metre 4 pole male to female  
4 core 1.5mm<sup>2</sup> LSOH lead



Code

P690405005.0

3 metre 4 pole male to free end  
4 core 1.5mm<sup>2</sup> LSOH lead



Code

P690207003.0

5 metre 4 pole male to free end  
4 core 1.5mm<sup>2</sup> LSOH lead



Code

P690207005.0

3 metre 4 pole male to free end  
3 core 1.5mm<sup>2</sup> LSOH lead



Code

P690203003.0

5 metre 4 pole male to free end  
3 core 1.5mm<sup>2</sup> LSOH lead



Code

P690203005.0

3 metre 4 pole 1 way  
switch drop lead



Code

P690303003.0

5 metre 4 pole 1 way  
switch drop lead



Code

P690303005.0

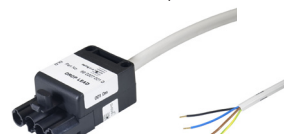
3 metre 4 pole 2 way  
switch drop lead



Code

P690315003.0

5 metre 4 pole 2 way  
switch drop lead



Code

P690315005.0

4 pole luminaire fixed T piece  
(Plastic) (1.5mm<sup>2</sup>) 0.3m 4 core drop



Code

P690705000.3

4 pole luminaire fixed T piece  
(Plastic) (1.5mm<sup>2</sup>) 0.3m 3 core drop



Code

P690703000.3

4 pole luminaire flying T piece  
(Plastic) (1.5mm<sup>2</sup>) 0.3m 4 core drop



Code

P690719000.3

4 pole luminaire flying T piece  
(Plastic) (1.5mm<sup>2</sup>) 0.3m 3 core drop



Code

P690717000.3

4 pole 3 way circuit splitter  
module (Plastic)

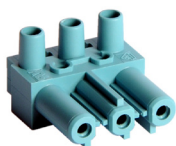


Code

P690806000.0

# Pre-fabricated 6 pole accessories

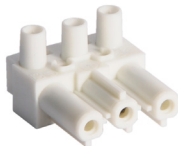
6 pole female Plug - blue connector



Code

144049GST

6 pole female plug - white connector



Code

144005GST

6 pole female plug - base



Code

144023

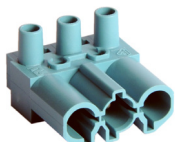
6 pole female plug - hood



Code

144016

6 pole male plug - blue connector



Code

144048GST

6 pole male plug - black connector



Code

144001GST

6 pole male plug - base



Code

144023

6 pole male plug - hood



Code

144016

1 metre 6 pole male to female  
6 core 1.5mm<sup>2</sup> LSOH lead



Code

P690474001.0

3 metre 6 pole male to female  
6 core 1.5mm<sup>2</sup> LSOH lead



Code

P690474003.0

5 metre 6 pole male to female  
6 core 1.5mm<sup>2</sup> LSOH lead



Code

P690474005.0

3 metre 6 pole male to free end  
6 core 1.5mm<sup>2</sup> LSOH lead



Code

P690250003.0

5 metre 6 pole male to free end  
6 core 1.5mm<sup>2</sup> LSOH lead



Code

P690250005.0

3 metre 6 pole male to free end  
5 core 1.5mm<sup>2</sup> LSOH lead



Code

P690249003.0

5 metre 6 pole male to free end  
5 core 1.5mm<sup>2</sup> LSOH lead



Code

P690249005.0

3 metre 6 pole male to free end  
4 core 1.5mm<sup>2</sup> LSOH lead



Code

P690248003.0

5 metre 6 pole male to free end  
4 core 1.5mm<sup>2</sup> LSOH lead



Code

P690248005.0

3 metre 6 pole male to free end  
3 core 1.5mm<sup>2</sup> LSOH lead



Code

P690247003.0

5 metre 6 pole male to free end  
3 core 1.5mm<sup>2</sup> LSOH lead



Code

P690247005.0

6 Pole / 6 tail fixed T piece (Plastic)  
(1.5mm<sup>2</sup>) 0.3m 6 core drop



Code

P690748000.3

6 pole / 6 tail flying T piece (Plastic)  
(1.5mm<sup>2</sup>) 0.3m 5 core drop



Code

P690746000.3

6 pole / 6 tail flying T piece (Plastic)  
(1.5mm<sup>2</sup>) 0.3m 6 core drop



Code

P690756000.3

6 pole / 5 tail flying T piece (Plastic)  
(1.5mm<sup>2</sup>) 0.3m 5 core drop



Code

P690754000.3

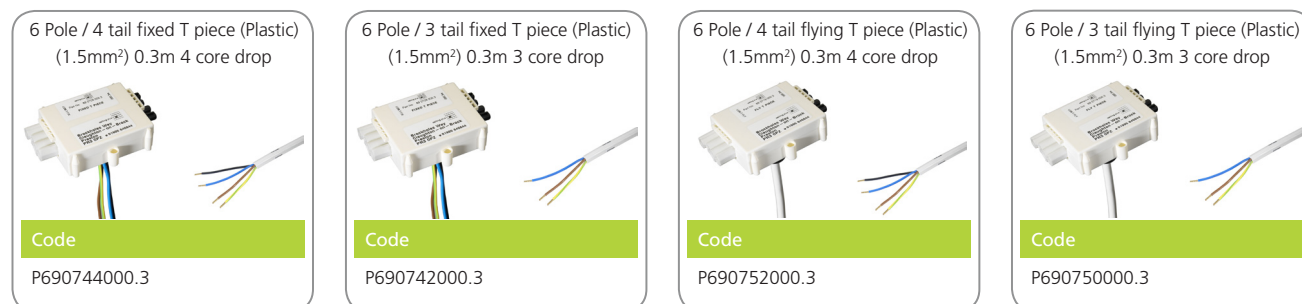
6 pole 3 way circuit  
splitter module (Plastic)



Code

P690814000.0

# Pre-fabricated 6 pole accessories



Please note: Both 4 pole and 6 pole pre-fabricated wiring systems are available in a variety of lengths so please ask a member of our sales team for more information.

## Technical Data

### Leads, T Pieces and Splitters Specification

Supply voltage	230 Volts AC +10%/-6% 50Hz
Current Rating	16Amp
IP Rating	IP2X
Connection	Via Wieland GST 18i 4 or 6 pole female, male locking/latching type, complying with the requirements of BS EN 61535 : 2009. All connectors are designed to comply with IEC 61535 (ed.1): 2009-02.
Operating temperatures	-5°C to 35°C

### Flexible Cable Specification

Material	Low smoke zero halogen inner and outer sheaths IEC60332.3 Cat C
Cores	4
Sizes	1.5mm <sup>2</sup>
Flame test to	IEC 332/3A – Category C HD 405.3 VDE 0472 part 804 test C
Self-extinguishing	VDE 0207 part 24 type HM2
Acid test	IEC 754-2
Smoke density	VDE 0482 part 268 IEC 1034-1/1034-2

### Connector Specification

Wieland	GST18 Range
Number of Poles	4 Pole or 6 Pole
Rated Voltage	250V
Rated Impulse Voltage	4kV for 250V and 250/240V
Rated Current	16A
Compliance	DIN VDE 0628 (BS EN/IEC 61535 : 2009) DIN VDE 0625, EN 60320
IP Rating	IP20
Insulation Components	Thermoplastic material (polyamide), halogen-free
Contact Parts	Brass with nickel plating

Locking device in accordance to DIN VDE 0628