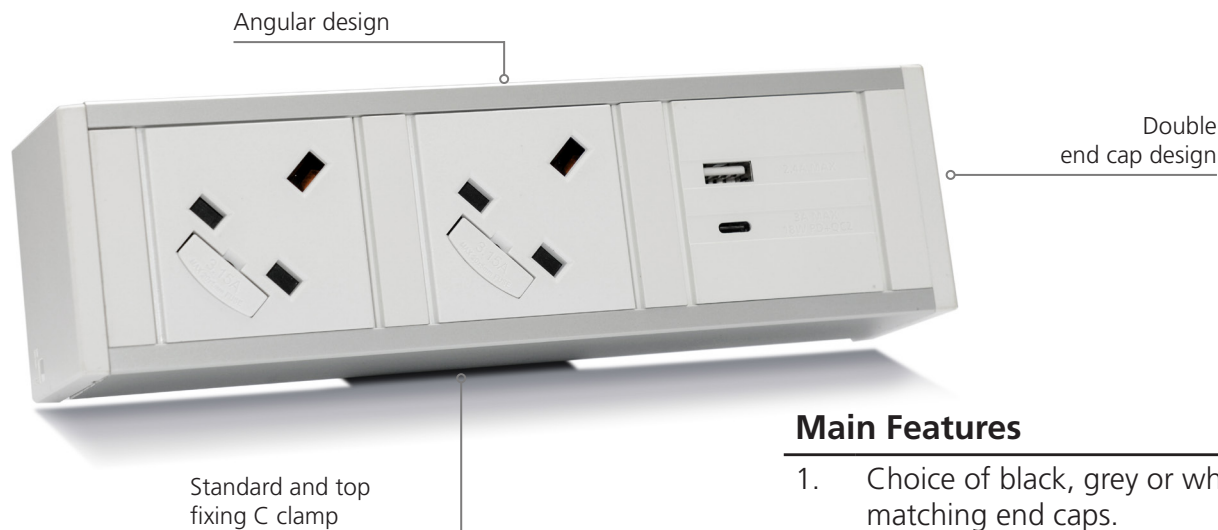


Linear - Information and Instruction Sheet



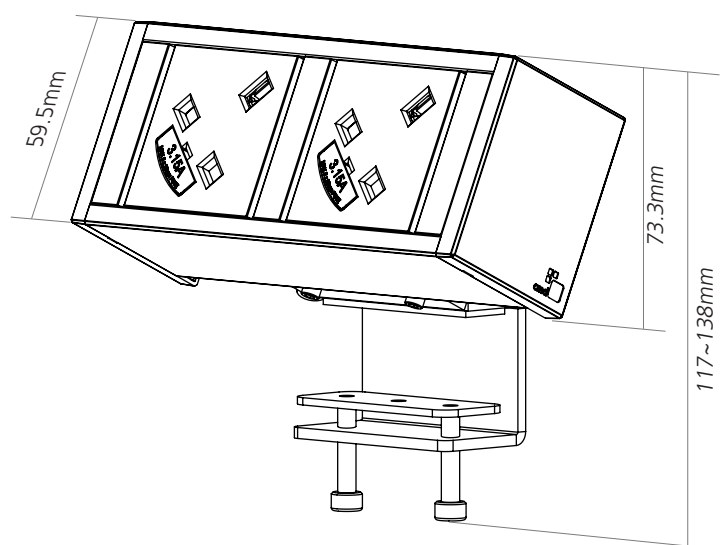
Linear has an angular appearance and shares many of the same design features as Harmony and Contour. These include a lateral fuse carrier, internal segregation between power and data and a double end cap system that has been designed to hide the fixing screws. Linear is fully compliant to current safety regulations.



Main Features

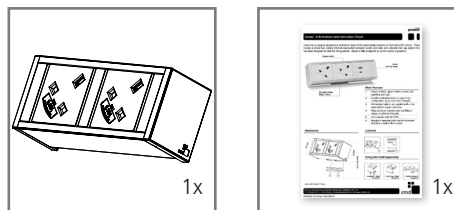
1. Choice of black, grey or white sockets and matching end caps.
2. Anodised extruded body to support any configuration up to 362.5mm in length.
3. All standard options are supplied with a 1m mains lead to 3 pole connector.
4. Fixing via Linear standard and top fixing C clamps or adhesive fixing kit.
5. Unit complies with BS 5733.
6. Requires a separate mains lead if connected directly to a wall or floor socket.

Dimensions

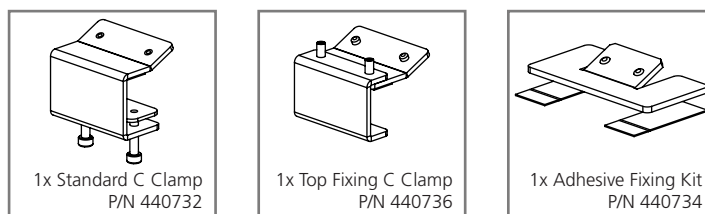


Linear with Standard C Clamp

Contents



Fixing Kits (Sold Separately)



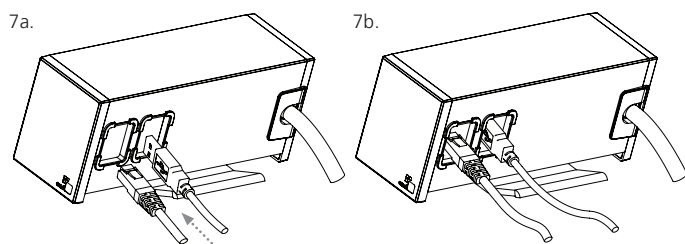
Linear - Information and Instruction Sheet

Fixing Instructions

1. Linear can be supplied with a range of desk fixing kits but our standard C clamp can be used on desk thicknesses of 15mm to 31mm.
 2. Remove the Linear module and the C clamp from the packaging supplied.
 3. Place the top of the C clamp into the slot at the back of the module and tighten the grub screw. Take care not to over tighten. (Note, if one C clamp is required, this should be positioned centrally. Where two C clamps are required, these should be fitted on the left and right hand sides.
 4. Ensure that the C clamp fixing bolts are unscrew to their maximum position.
 5. Find a suitable place for the module to be installed and position the back of the module against the back of the desk.
 6. Position the C clamp spreader to protect the desk and tighten the bolts to secure the module using an appropriately sized Allen key (not provided)
 7. The 1m cable and Wieland connector should be placed into a cable management basket under the desk and connected to the power supply by a qualified or competent person.
- NB Scan the QR code below to visit the Linear page on our website.



Fitting the Keystone Couplers



7a. The data cables must be fitted at the back of the module.

7b. Care must be taken to ensure the cables are fitted securely.

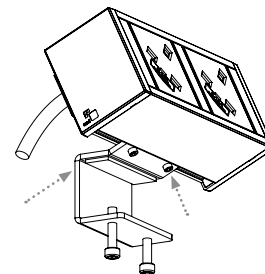
Warning

Do not use this product for any purpose other than which it was designed for.

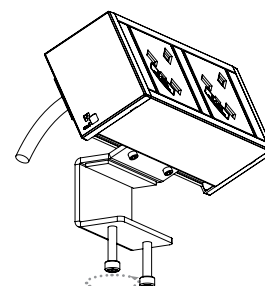
All electrical cables should be fitted by a qualified or competent person.

Do not dismantle or remodel the power module.

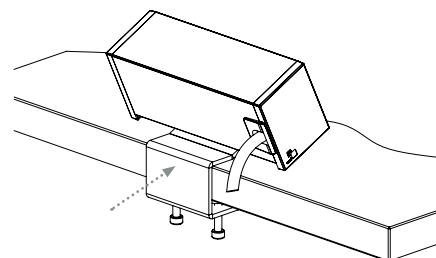
3. Place the C clamp into the slot and tighten the grub screws



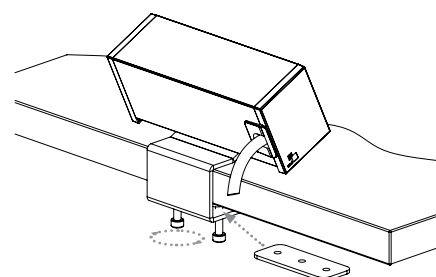
4. Unscrew the bolts to their maximum position



5. Position the module and C clamp against the back edge of the desk



6. Position the C clamp spreader to protect the desk and tighten the bolts to secure the module



Cleaning, Storage & Maintenance

Cleaning & Maintenance	Use a dry cloth. No abrasives or solvents to be used on the module surface.
Handling & Storage	Do not drop or expose to moisture.