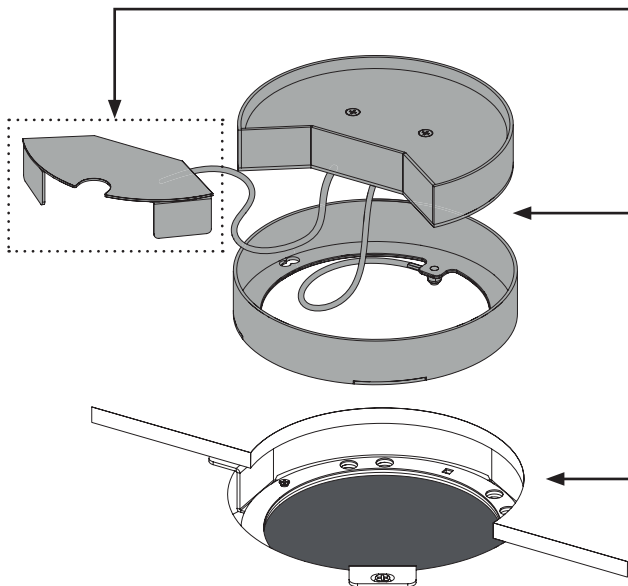


Stage 2: Grommet Installation (Recessed Lid/Tramline Trim)

Overview: This instruction assumes that the in-floor product elements have already been installed and that the floor covering has been laid (See Stage 1 installation guide).



A tethered Entry Cover is an optional lid configuration.

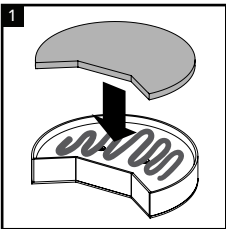
Stainless Steel Grommet kit comprises grommet body with a tethered lid. It fixes directly to the in-floor element.

In-floor element is already installed and floor covering is laid. This may be a simple pass-through floor mount or a socket 'Hive' configuration.
Stainless Steel Grommet installation is the same in either case.

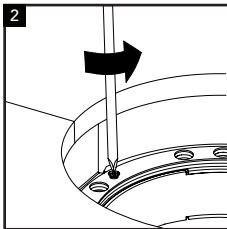
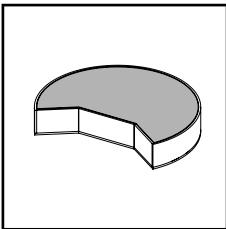
Note that the grommet may be installed prior to the floor covering, so that flooring can be laid accurately up to it.

Please read this installation guide carefully and ensure that you have all of the components you need to complete the relevant stage of the installation.

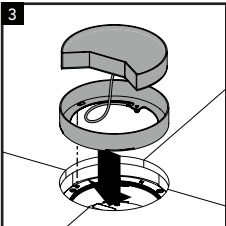
Installing the recess lid and trim



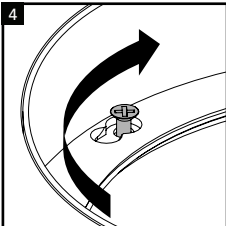
1 A section of floor covering can be installed into the grommet lid recess. Cutting guides are available if required. Please download from our website or contact your CMD account manager.



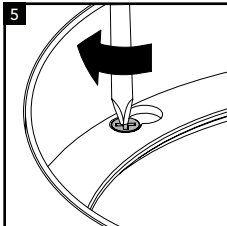
2 Loosen the two fixing screws 5 turns. Do not remove the screws completely!



3 Align the keyhole details with the fixing screws and lower the grommet into the floor.

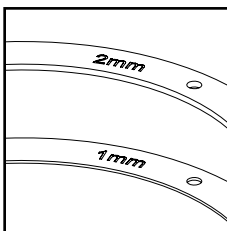
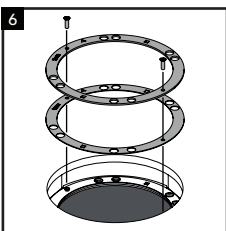
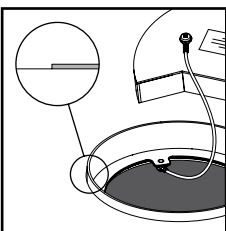


4 Locate the fixing screws in the keyhole details then rotate the body clockwise.

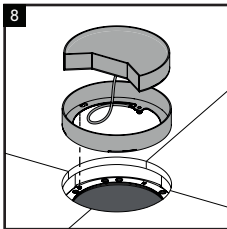
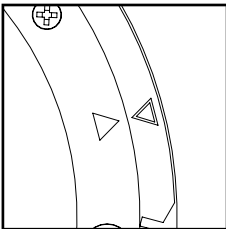
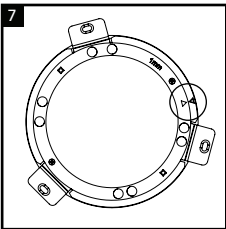


5 Fully tighten both fixing screws to secure the grommet in place.

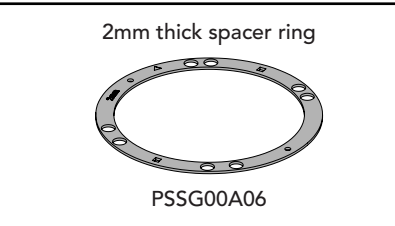
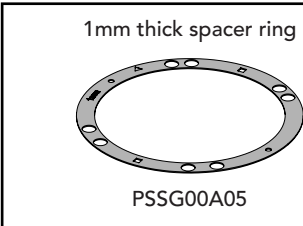
Adjusting the trim height with spacer rings



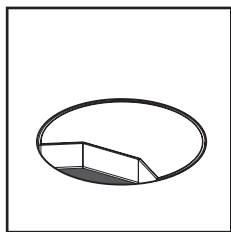
If the lip of the trim is not exactly flush with the floor surface, the height can be fine-adjusted by removing or adding spacer rings. Carefully remove the grommet body and the two fixing screws, then remove or add the rings as required. (Take care not to drop the screws into the floor void.)



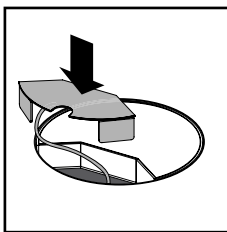
Align the arrowhead on the spacer ring with the arrowhead on the mount to ensure correct installation position. Then carefully re-insert the fixing screws and re-install the grommet (Take care not to drop the screws into the floor void.)



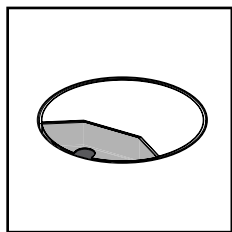
Additional spacer rings are available to order from CMD for adjusting the height of the trim as shown in steps 6-8.
1mm thick spacer ring: Part No. PSSG00A05.
2mm thick spacer ring: Part No. PSSG00A06.



Fit the grommet lid in the preferred orientation.

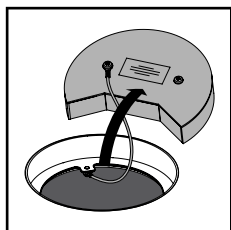


If a cable Entry Cover is included, it simply sits in the entry aperture. Entry cover can be ordered separately. Order part No. PSSG00A02 from CMD.

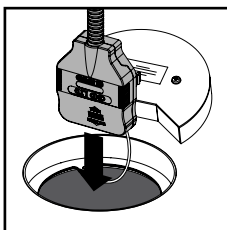


Note that the finger-hole is provided solely to aid removal of the cover. It is not intended to be used as a cable-entry feature.

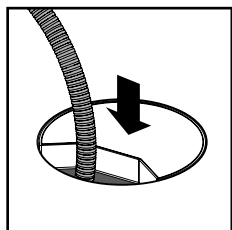
Installing cables and conduit (pass-through configuration)



Lift up the lid and rest on the floor to the side of the grommet.



Feed the desired cables or conduit through the grommet and under the floor.

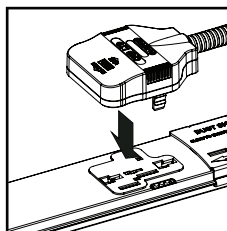


Fit the lid back in place with the cable/conduit sitting in the entry aperture.

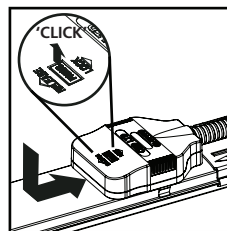
Tap-off engagement/release

WARNING

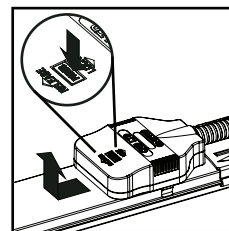
An unterminated tap-off **MUST NEVER** be connected to a live track. Provided that it is off load, a terminated tap-off may be removed/inserted into a live track. Conduit must be bonded to Earth.



Align tap-off pins with slots on socket. Push down to engage.

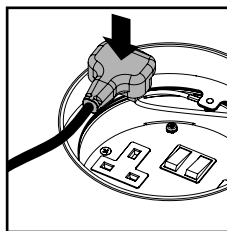


Press down and push backwards until button clicks upwards to lock.

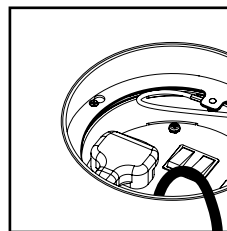


To remove, press button to disengage. Push forwards and lift up to remove.

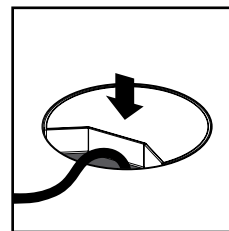
Inserting plugs



Lift out the lid and place to the side. Insert the plug into the socket as shown.



With the socket inserted, carefully put the lid back into the grommet.



The cable should feed out of the lid, allowing the lid to sit flush with the grommet.

Additional information

Safety

- Installation is to be carried out in accordance with relevant Health & Safety regulations and only to be carried out by a skilled or competent person.
- It is recommended that this product is not installed in high traffic areas.
- The product should be installed to comply with the relevant national standards and be inspected and tested prior to being put into service (in the UK BS 7671 Wiring Regulations).
- Isolate the supply before installation or repositioning. Any locking mechanisms must be used and fully engaged.
- Incorrect use could lead to risk of electrocution.
- Product to be used only for the intended purpose of distributing power in a commercial environment.
- Ensure to replace the lid after use.
- Do not misuse, dismantle or re-configure the product because doing so will invalidate the warranty.
- If a product incorporates RCD protection, the RCD should be regularly tested in-line with current standards.

Standards

- Refer to the Declaration of Conformity.

Further guidance

- Should the supply cable need replacing, contact CMD.

Product care

- Clean using a dry cloth. No abrasives or solvents to be used on the product.
- Do not drop or expose to moisture.

