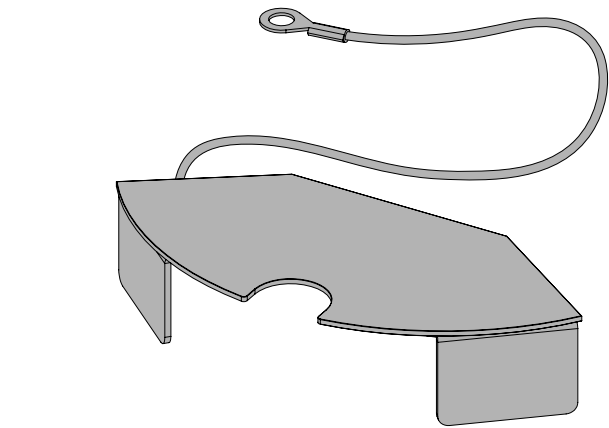


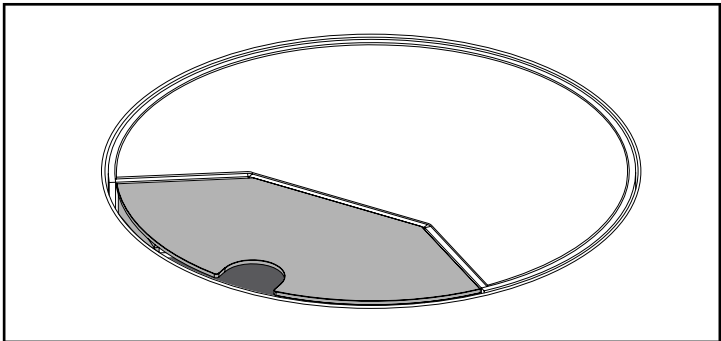
Overview: The Entry Cover is available as a retro-fittable accessory to the Stainless Steel Grommet (Note that it is only compatible with the Recessed Lid/Tramline Trim grommet variant.) This accessory can be used to cover the cable/entry aperture when it is not in use.



Please read this installation guide carefully and ensure that you have all of the components you need to complete the relevant stage of the installation.

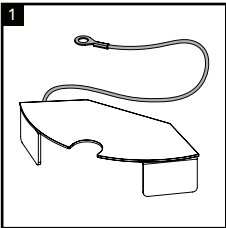


Entry Cover Accessory

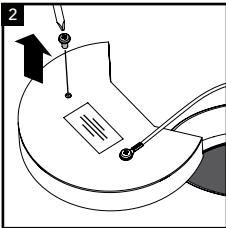


Entry cover installed

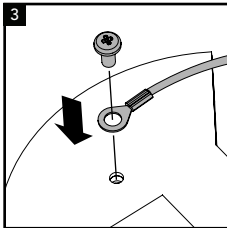
Installing the Entry Cover



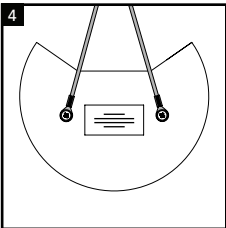
The Entry Cover is supplied with a tether to attach to the grommet lid.



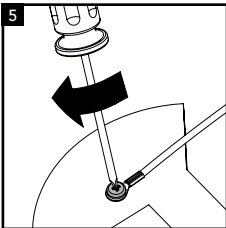
Remove the 'vacant' screw from the underside of the grommet lid.



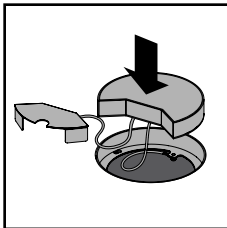
Refit the screw whilst capturing the tether eyelet beneath.



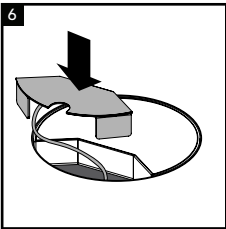
Note the recommended direction of the tether.



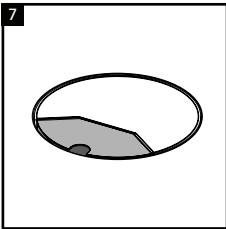
Fully tighten the screw to secure the tether in place.



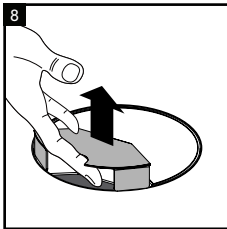
The cover is now securely attached to the grommet lid.



Fit the grommet lid into the grommet. Ensure not to trap the tether.



The Entry Cover simply sits flush in the entry aperture in the position shown.



The Entry Cover can easily be lifted using the finger-hole provided.

Note that the finger-hole is provided solely to aid removal of the cover. It is not intended to be used as a cable-entry feature.

Additional information

Safety

- Installation is to be carried out in accordance with relevant Health & Safety regulations and only to be carried out by a skilled or competent person.
- It is recommended that this product is not installed in high traffic areas.
- The product should be installed to comply with the relevant national standards and be inspected and tested prior to being put into service (in the UK BS 7671 Wiring Regulations).
- Isolate the supply before installation or repositioning. Any locking mechanisms must be used and fully engaged.
- Incorrect use could lead to risk of electrocution.
- Ensure to replace the lid after use.
- Do not misuse, dismantle or re-configure the product because doing so will invalidate the warranty.

Product care

- Clean using a dry cloth. No abrasives or solvents to be used on the product.
- Do not drop or expose to moisture.

