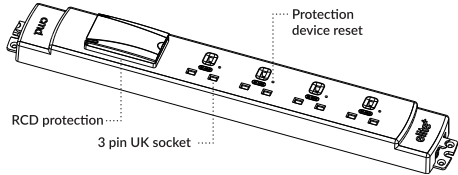


cmd. Elite+ Power System

Installation and care guide



Elite+ available as 2, 3, 4 or 6 socket, with RCD and 4 socket + RCD units. 4 socket with RCD shown for illustration purposes

Safety warning

For your safety, this product must be installed in accordance with local Building Regulations. **If in any doubt, or where required by the law, consult a competent person who is registered with an electrical self-certification scheme. Installation should be in accordance with the latest edition of the IET regulations (BS 7671).** If the unit is being installed in an office environment by means of a 13A plug please ensure BS6396 is adhered to.

Please read carefully and use in accordance with these safety instructions. Before commencing any electrical work ensure the supply is isolated at the mains. To prevent fire hazard always use a power lead of the correct rating and type for the application.

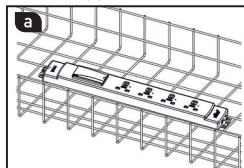
Warning: Do not exceed the load rating of this device as stated on the rear of the product. Incorrect use could lead to risk of electrocution.

Built in protection

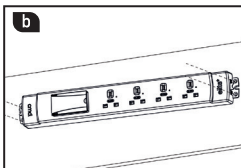
This product has been designed to protect connected equipment as well as end user. Each socket outlet has protection in the form of a resettable thermal fuse that detects overloads or any defective equipment that may be connected.

Mounting under-desk

Suitable for mounting in a cable tray/basket (a), or directly under desk to the vanity panel (b).



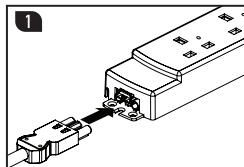
Place module in cable tray/ basket and secure with suitable fixing devices if possible.



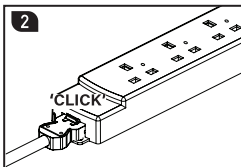
Mark hole positions and drill pilot holes. Fix with suitable M4 screws (do not over-tighten).

Connecting to the power supply

Use a starter lead or interconnect lead (supplied separately).



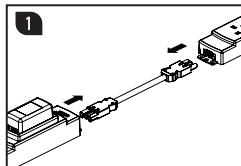
Insert female GST connector into male GST socket on power module.



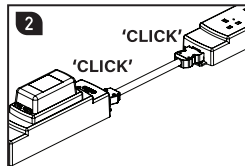
Ensure GST connector is pushed fully into module and secured by locking mechanism.

Linking Elite+ modules

To connect an RCD or multiple power modules together follow this process. Important - there must be maximum of 6 sockets from a single power feed:



Insert male GST connector to female GST connector and vice versa.



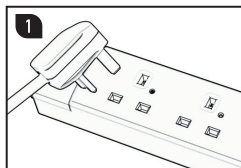
Ensure GST connectors are pushed fully in to modules and secured by locking mechanisms.

Elite+ is fitted with an external earth lead for connection to furniture when required. If the earth lead is not required it can be removed. Loosen the exposed screw on the base of the unit and remove the earth lead and tighten the screw.

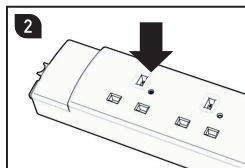
Resetting the built in protective device

If there is no power due to an overloaded socket or defective connected equipment, the built-in protection will operate.

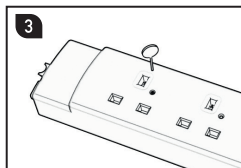
A red indicator will be raised and the protection device will need resetting. Please follow the below steps to reset the device:



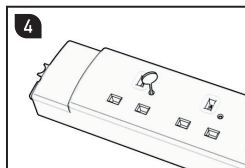
Remove the plug.



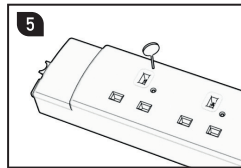
Confirm the red indicator beneath the plug has risen.



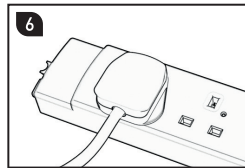
Locate a tool (not included) and insert in to the reset opening.



Push until it clicks.



Remove tool. Investigate and rectify any faulty equipment.



Reconnect the equipment.

RCD protection

Safety advice

What is a safety RCD module?

Your safety RCD module continuously monitors the power supply to any electrical appliance plugged in to it and cuts off the power within 40 milliseconds if an earth current fault is detected. This is fast enough to prevent a fatal electric shock. Electrical equipment can become dangerous if the wiring becomes loose, if they or their power cords become damaged, or if they get wet. Electrocutation is also possible if fingers, spillages or other conductive bodies enter the appliance. In all these cases your safety RCD socket will instantly cut the electricity before you or a colleague receives a potentially fatal electric shock.

Latching operation

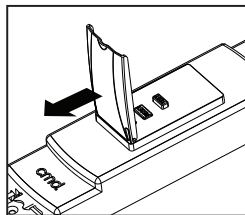
If the unit loses supply, perhaps in a power cut or when a hazardous earth fault occurs, the RCD will trip and cut the power supply. When the supply resumes through the RCD, the RCD will revert to the original state and supply power without the need for resetting. DUE TO LATCHING OPERATION, FOR SAFETY THIS PRODUCT SHOULD NOT BE USED FOR ANY EQUIPMENT THAT WOULD CAUSE A HAZARD IF RE-ENERGISED WITHOUT SUPERVISION.

Test procedure - TEST BEFORE USE

1. Ensure the power is on, carefully open the cover to access the RCD. Press the RESET button, the red indicator should appear.
2. Press the TEST button - the RED indicator should disappear, DO NOT USE IF THE RED INDICATOR REMAINS.
3. Press the RESET button - the RCD has now been set for safe use provided the RED indicator shows in the clear window.

Resetting RCD:

Carefully open spring loaded cover to access RCD.



Batch code explanation

yyWxx Manufacturing date code, year of manufacture (yy) and week of manufacture (Wxx)

Environmental protection

This product should not be disposed of with general household waste. Some chemicals contained within electronics can be harmful to health and environment.

Only dispose of electrical items in dedicated collection schemes.



Technical

Voltage: 220-250V~

Frequency: 50/60Hz

Rating: Max 16A (Check power rating for the individual socket)

Maximum load: 4,000 Watts

Standards: BS 5733 (Socket only), BS 7288 (RCD part)

Connectors: 3 pole GST18 input & output

RCD rating: 30mA

Trip speed: 40ms

Mounting options: Standalone or screw mounting

Dimensions (mm):

2G = 31.5 (h), 60 (w), 229.5 (l)

3G = 31.5 (h), 60 (w), 283.5 (l)

4G = 31.5 (h), 60 (w), 337.5 (l)

6G = 31.5 (h), 60 (w), 445.5 (l)

RCD = 45 (h), 60 (w), 229.5 (l)

4G+RCD = 45 (h), 60 (w), 445.5 (l)

Trip contacts : Double pole

RCD type : Latching mechanism, Type A

Service conditions

This module is only for use under the following conditions of service:

- An ambient temperature range of -5°C to +40°C, with an average value not exceeding +35°C over one full day.
- An altitude not exceeding 2,000m above sea level.
- An atmosphere not subject to excessive pollution by smoke, chemical or flammable fumes; salt-laden spray; prolonged periods of high humidity or other abnormal conditions.
- Not suitable for exposure to direct radiation from the sun or other source of heat likely to raise the temperature above the designated ambient, nor may it be suitable for subjection to excessive vibration.
- Do not misuse, dismantle or re-configure the product because doing so will invalidate the warranty.
- Product to be used only for the intended purpose of distributing power and data in office and commercial environments.
- If a product incorporates RCD protection, the RCD should be regularly tested in-line with current standards.

Where service conditions differ from those prescribed above the advice of the manufacturer or responsible vendor should be sought.

Product care

Clean using a dry cloth. No abrasives or solvents to be used on the product. Do not drop or expose to moisture.

Address / Helpline

+44 (0) 1709 829 511 or sales@cmd-ltd.com

HEAD OFFICE

Sycamore Road, Eastwood Trading Est.
Rotherham, South Yorkshire, S65 1EN

+44 (0)1709 829 511
sales@cmd-ltd.com

LONDON SHOWROOM

3 Baltic Street East
London, EC1Y 0UJ

+44 (0)20 7251 7080
sales@cmd-ltd.com

SALES INTO EU

(EU) **Luceco SE**
C/ Bobinadora 1-5
08302 Mataró, SPAIN
es_ordersretail@luceco.es

cmd.

CMDELTL-B