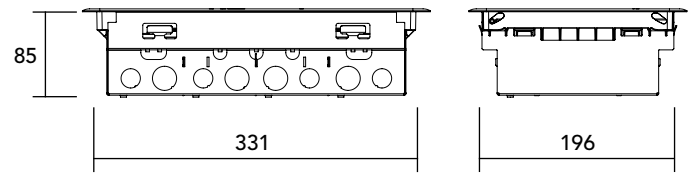


25 series floor box (single box base) dimensions in mm.



Prepare the floor aperture

1

Floor aperture (plan view) 200mm
332mm

Cut the floor aperture to 332mm x 200mm +/- 1mm tolerance. Recommended floor thickness 15-40mm.

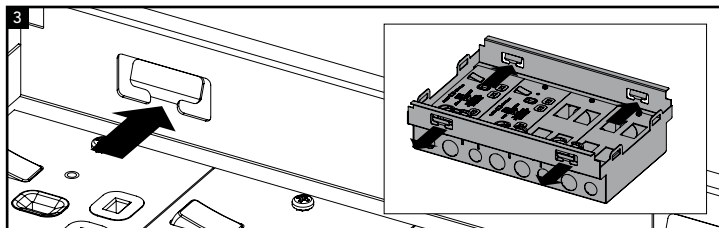
Fast fit installation

2

a b

Pre-wired box shown for illustration purposes

Position the floor box centrally over the aperture and lower it down evenly into it. If pre-wired, angle the box and lower into the aperture. (2a). Apply firm and even pressure all round (2b).



Depending on the floor thickness, you may find it necessary to bend out the metal tabs to suit (3).

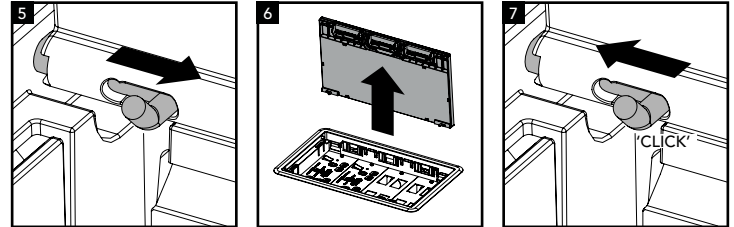
Fitting the lid inlay

4

Lid inlay (plan view) 139mm
319mm
6.5mm MAX. inlay thickness

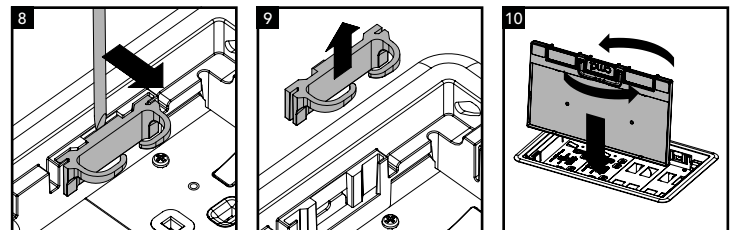
Cut out the inlay from the desired material substrate and secure with a suitable bonding agent.

Removing and refitting the lid



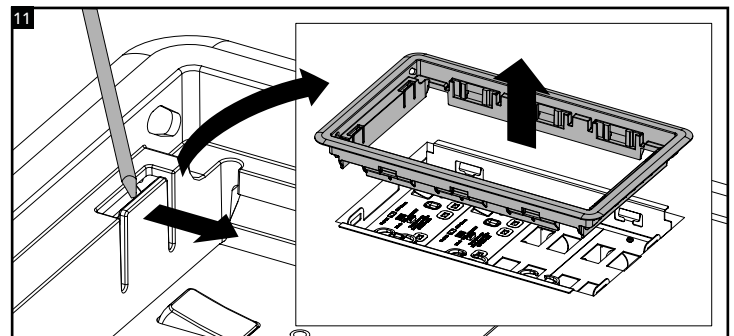
Slide the latches on both ends of the lid towards the centre of the floor box (5). Lift the lid up and away from the floor box (6). Reverse the previous two steps to replace the lid (7).

Reversible lid (switch the side the lid opens from if necessary)

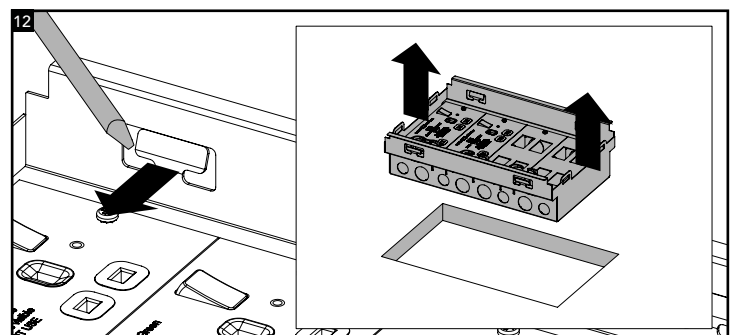


Insert a flat blade screwdriver into the slot at the rear of the cable guide and lever forwards to release (8). Lift out the cable guide (9). Repeat for the remaining guides and fit them to the opposite side of the box. Rotate the lid 180° so the lid will open from the opposite side and lower the lid in place (10). Secure the 2x latches as shown in step 7.

Removing the trim and floor box

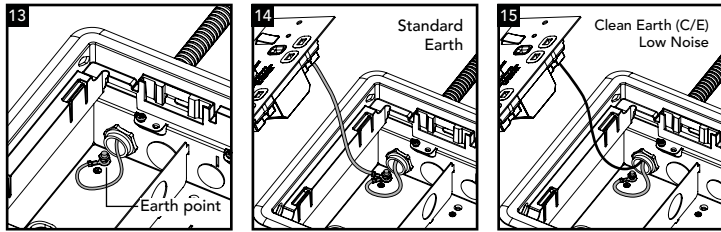


Insert a suitable flat blade screwdriver into the slot and lever outwards to push the clip inwards. Hold and repeat on remaining 3x clips. Lift the plastic trim off the metal back box.



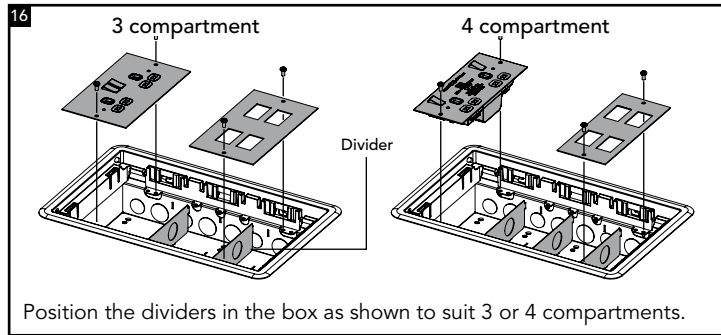
Use a flat blade screwdriver to release the 4x metal clips in the corners and lift out the floor box.

Earthing the box and sockets

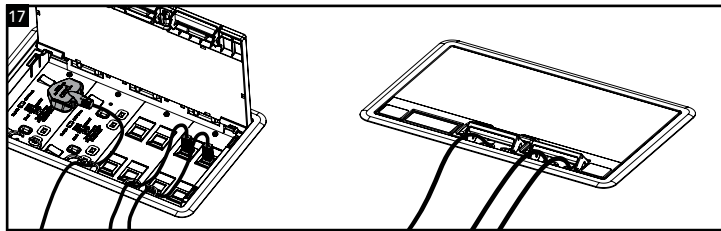


The box base must be earthed with a suitable ring terminal to the integrated earth point. To ensure the sockets are earthed, a link will be required from the box earth point to the socket earth. On Clean Earth (C/E) Low Noise installations these should be wired directly to the Clean Earth CPC (Circuit Protective Conductor). Ensure the conduit is earthed.

Configuring the box for 3 or 4 compartments



Cable management



Plug any power and data cables into their respective sockets. If possible, try to keep power and data cables segregated when using the cable guides. Carefully close the lid and ensure the cables are fed out through the cable access brackets.

Additional information

Safety

- Installation is to be carried out in accordance with relevant Health & Safety regulations and only to be carried out by a skilled or competent person.
- It is recommended that floor boxes are not installed in high traffic areas.
- The installation should be installed to comply with the relevant national standards and be inspected and tested prior to being put into service (in the UK BS 7671 Wiring Regulations).
- Isolate the supply before installation or repositioning. Any locking mechanisms must be used and fully engaged.
- Incorrect use could lead to risk of electrocution.
- The lid and handle are designed to be self closing for safety. Do not wedge open. The lid opens to a maximum angle of 85°.
- Product to be used only for the intended purpose of distributing power in a commercial environment.
- Do not misuse, dismantle or re-configure the product because doing so will invalidate the warranty.
- If a product incorporates RCD protection, the RCD should be regularly tested in-line with current standards.

Standards

- Refer to the Declaration of Conformity.

Further guidance

- If viewing this sheet prior to specification/technical documentation purposes, be aware of potential plug clashes with certain socket plate orientations.

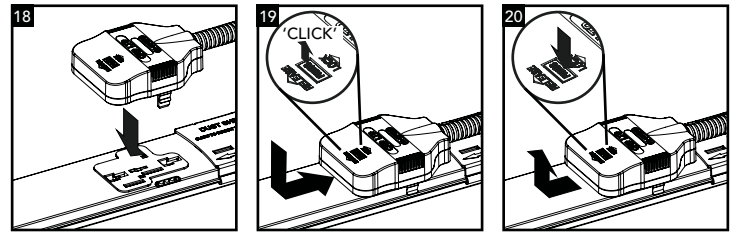
Product care

- Clean using a dry cloth. No abrasives or solvents to be used on the product. Do not drop or expose to moisture.

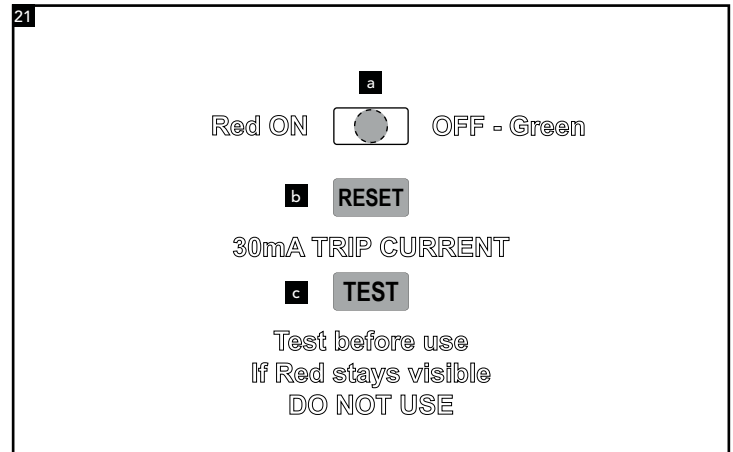
Tap-off engagement/release

****WARNING****

An unterminated tap-off **MUST NEVER** be connected to a live track. Provided that it is off load, a terminated tap-off may be removed/inserted into a live track. Conduit must be bonded to Earth.



Testing and resetting SRCD socket (if applicable)



A qualified or fully competent person should test the SRCD before first use. The RED indicator will normally show in the clear window (a). If it does not, press RESET button (b) and the RED indicator should appear. Press the TEST button (c) and the RED indicator will disappear from the CLEAR window (a). Do not use if the RED indicator remains - seek assistance from a qualified electrician. Press the RESET button. The RCD has now been set for safe use (RED = ON).

Should the RCD fail to complete any part of the test procedure, or continuously trips off when in use, stop using and seek expert advice.

