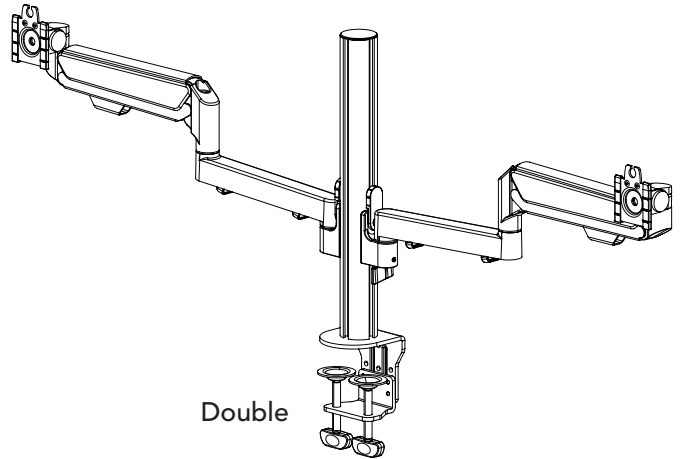


Single

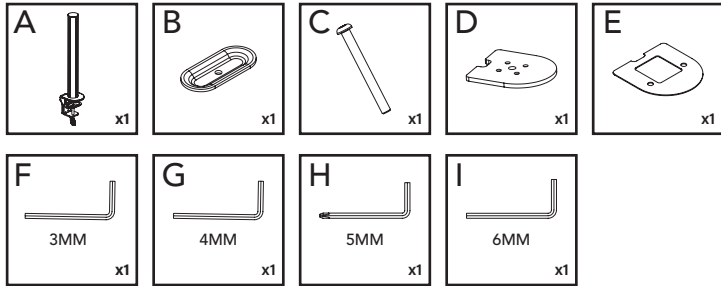


Double

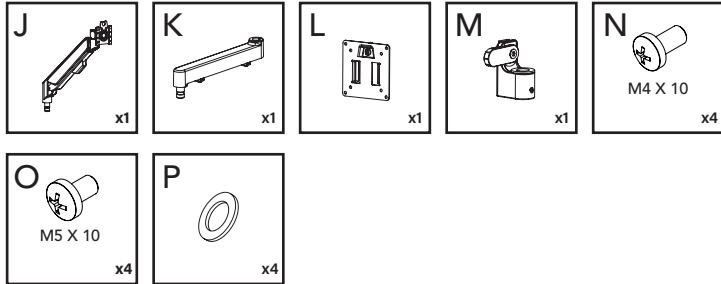
The single and double Arbour arm uses a 390mm pole.

Contents

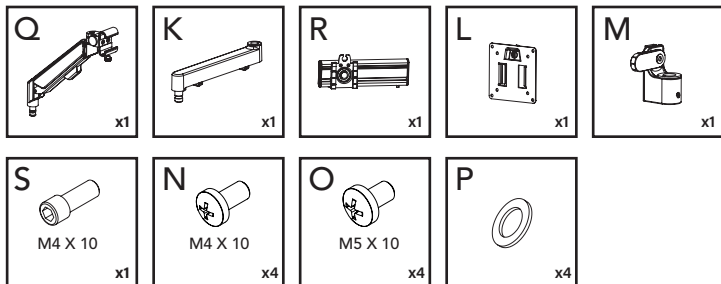
68A001/68A002



68A005/68A006



68A009/68A010



Max Size
32"



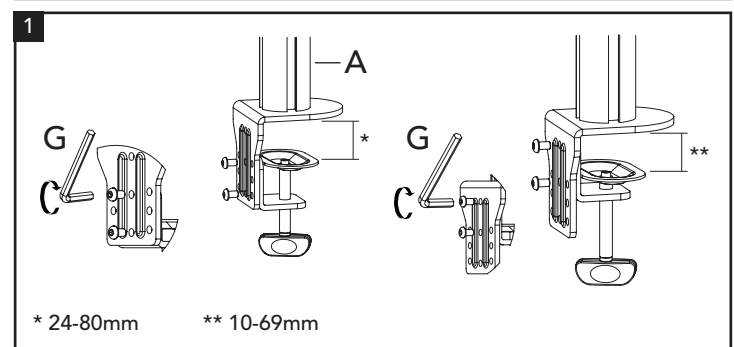
Load Capacity
2-9kg



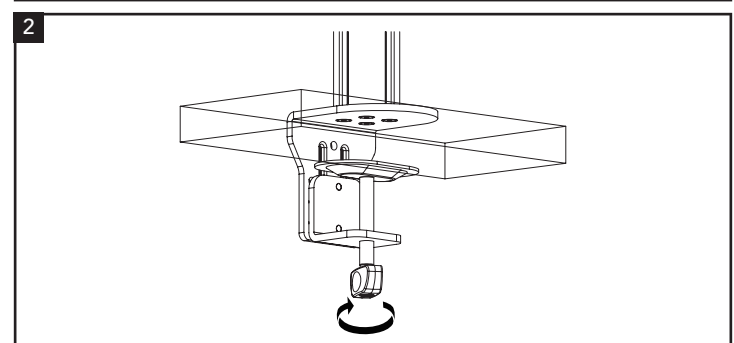
VESA
100x100 & 75x75mm

Read the entire installation guide before you start the installation and assembly. If you have any questions regarding any of the instructions or warnings, please contact CMD.

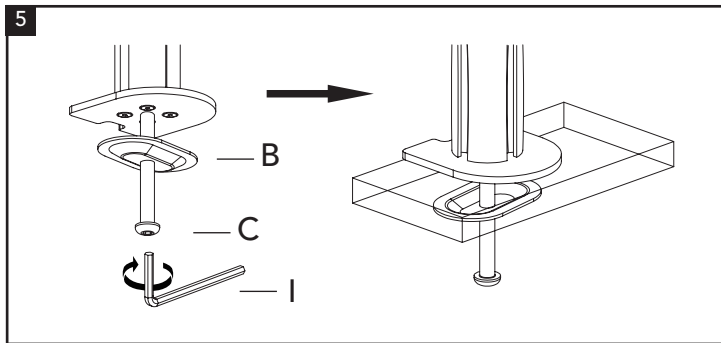
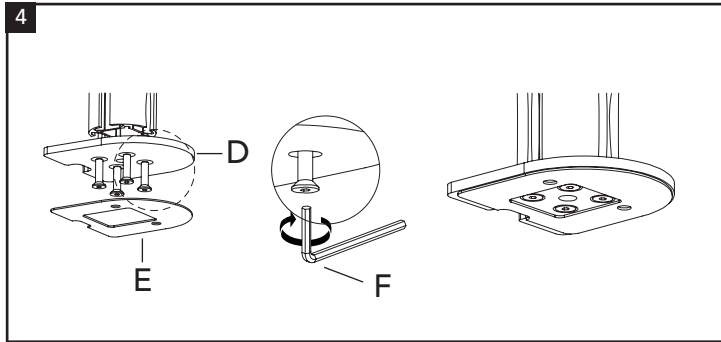
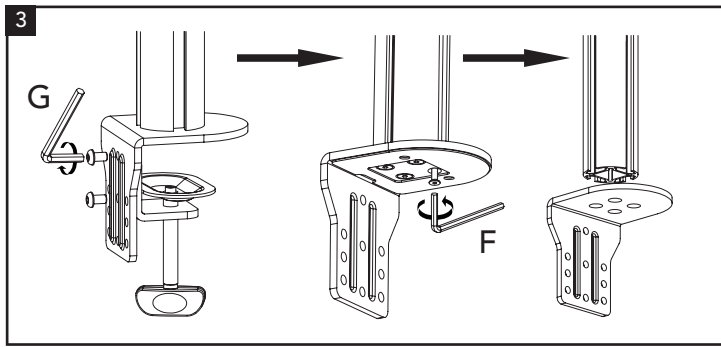
Adjusting the split clamp to suit the worksurface



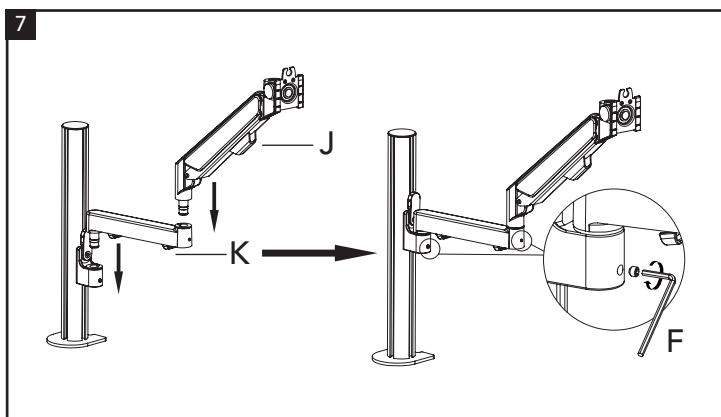
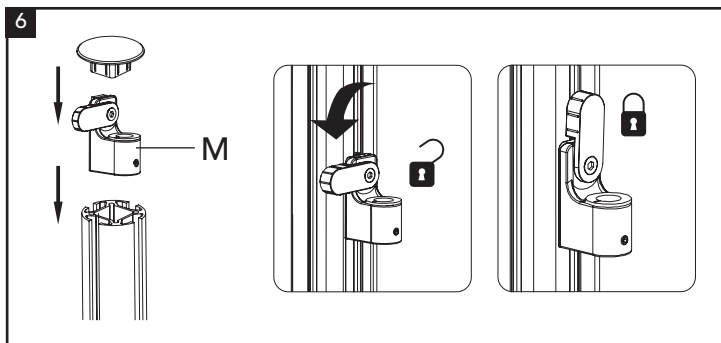
Mounting the pole with split clamp



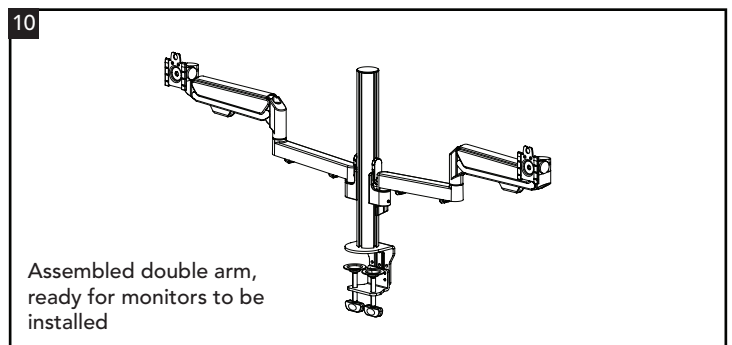
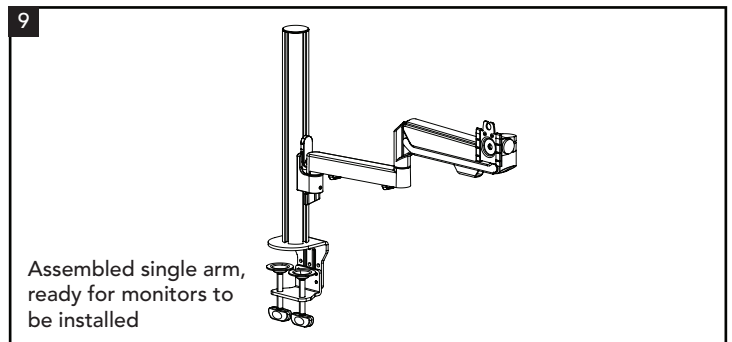
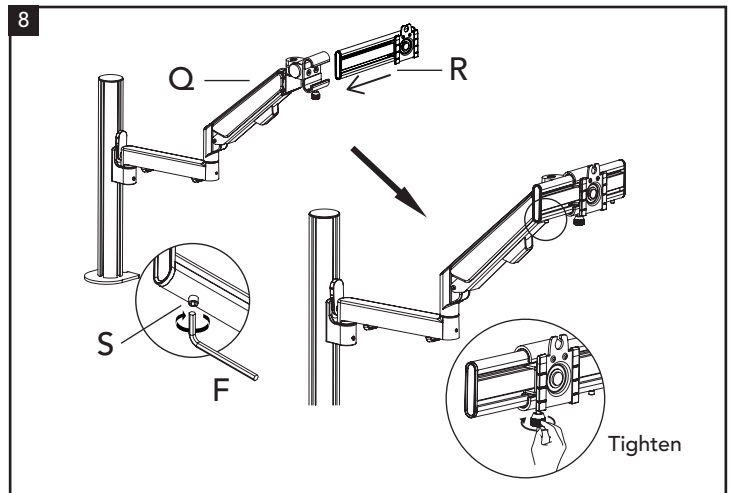
Through the worksurface mounting option



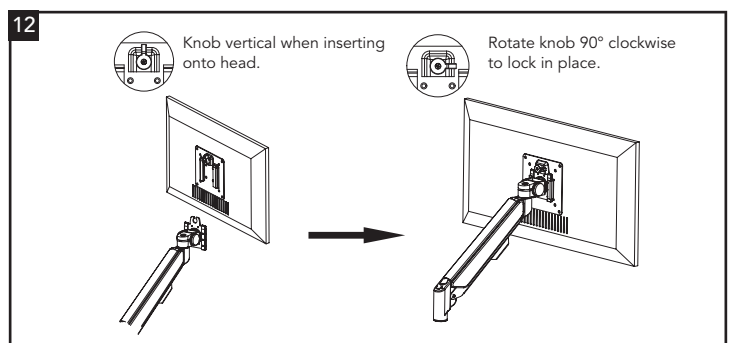
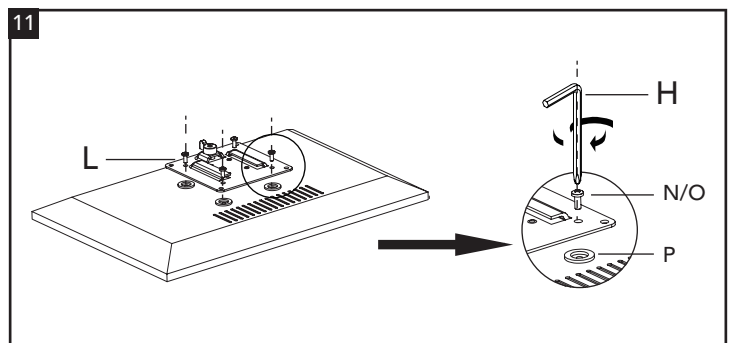
Installing the arm



Installing the slider (supplied with 68A009 & 68A010 only)

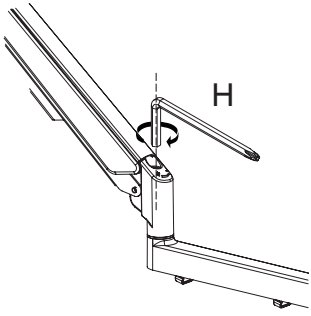


Installing the VESA plate



Further adjustment - arm tension

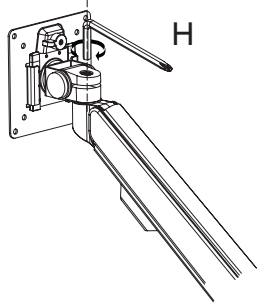
13



The load weight of mount is 2 to 9kg, factory default settings: 5 to 7kg, it will increase gradually when adjusting the allen key (H) in a clockwise rotation, and vice versa. Note: be careful not to overtighten and damage the thread.

Further adjustment - head pitch

14



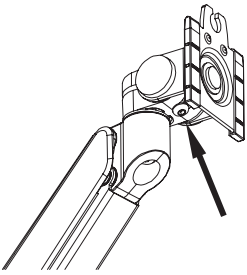
If you feel the pitching angle is too tight or too loose when adjusting the mount, please adjust the screw.

Turn clockwise to tighten.

Turn counterclockwise to loosen.

Further adjustment - head limit screw

15



This limit screw can prevent the head from sinking. If necessary, it can be removed using allen key (G).

Additional information

Safety

- Fix the clamp of the monitor arm to a suitable solid worksurface that is capable of supporting the arm, its maximum specified load and necessary equipment.
- Product to be used only for the intended purpose of supporting certain display equipment in an office environment.
- Installation is to be carried out in accordance with relevant Health & Safety regulations and only to be carried out by a skilled or competent person.
- Use the mounting screws provided and do not overtighten.
- This product is intended for indoor use only.
- Do not misuse, dismantle or re-configure the product because doing so will invalidate the warranty.
- Check that the clamp is secure and safe to use at regular intervals (at least once every 3 months).
- Using products heavier than the rated weights indicated may result in instability, causing possible injury.

Standards

- Refer to the Declaration of Conformity.

Product care

- Clean using a dry cloth. No abrasives or solvents to be used on the product.

